

THE POINT

Life SCIENCES GROW

Pre-Med
among new
programs in
biological
sciences

Top Psychology

Campus hosts
national conference

Reaching High

Pioneer volleyball
scores national
tournament





Dear alumni and friends,

It's commencement season at Point Park, a time of transition and transformation. As we welcome summer and look back upon the past year, we can all point to moments of joy and pride, as well as significant changes and opportunities for reflection.

For the University community, one of those major transitions took place early this year when Dr. George R. White, one of our most devoted friends and neighbors, died on Jan. 14 after a long illness.

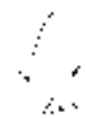
It is impossible to overstate the impact that Dr. White, a business leader, scientist and urban visionary, has had on Point Park University. A longtime champion of the University's transformative potential, his contributions to academic and campus life spanned more than two decades. For example, he served as a University trustee and provided support for such projects as the GRW Theatre in the University Center and the George Rowland White Performance Studio in the Dance complex. And with his wife Kathleen, he recently established the George R. White Endowed Professor of Accounting and Finance in the School of Business. We will miss his good counsel, his innovative ideas, and most of all his dedicated friendship.

Dr. White often said, "it is in getting to know the students of Point Park that you truly appreciate the unique character of this University." We couldn't agree more, and we'll continue to honor and build upon his legacy in the years to come.

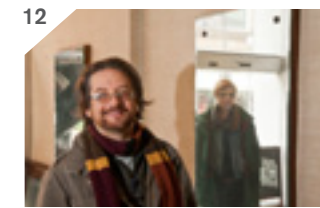
In keeping with that spirit of innovative transformation, Point Park is proud to announce the establishment of a new Center for Student Success, which combines many years of exceptional experience from the Success Centers in the four schools into one comprehensive Center. The purpose is to provide quality academic and career support so that all students can reach their individual potential.

When you're in the neighborhood, we hope you'll stop by to see a range of exciting campus developments, including the recently completed Wood Street Corridor project, the opening of a new restaurant, Osteria 100, in the Village Park, and more. There's much to celebrate and enjoy in our ongoing campus transformation.

Warm regards,



Dr. Paul Hennigan
President



12



18



24



On the cover:
Leroy Headen, a graduating senior in biotechnology, holds a DNA model in Point Park's biological sciences laboratory in Academic Hall. Photo by Ian Bradshaw.

TABLE OF CONTENTS ▶

- 2** Feedback
- 2** News and Views
- 12** Around the Neighborhood
Visit the Academic Village for new exhibits, a new restaurant and more
- 14** Top Psychology
Point Park hosts national conference, builds programs and encourages original research
- 18** Discovery Channels
Researchers discover a novel chemical process with extraordinary possibilities
- 20** Point Park by the Numbers
- 22** Inclusive Education
Professor Jamesena Talbott leads efforts to foster diversity throughout campus community
- 24** For the Children
Professor Lorelei Stein is an advocate for children of incarcerated parents
- 26** Honor Roll of Benefactors
- 39** Class Notes
- 42** Heart of Point Park
A small sample of alumni couples share their stories
- 46** Pioneer Athletics
Point Park volleyball reaches national tournament, plays on campus for the first time

TALK TO US!

The Point wants to hear from you. Send your comments and suggestions to:

Managing Editor
Marketing and Communications
Point Park University
201 Wood Street
Pittsburgh, PA 15222

Phone: 412-392-6108 Fax: 412-392-6185
Email: thepoint@pointpark.edu

President
Paul Hennigan, Ed.D.

Vice President of
External Affairs
Mariann Geyer

Senior Director of Marketing
and Communications
Mary Ellen Solomon

Managing Director of
Communications and
Client Services
Nancy Commella

Managing Editor
Cheryl Valyo

Graphic Designers
Christie Martz
Judy Sporka

Director of Organizational
Identity and Photography
Dalton Good

Manager of Printing
and Office Services
Don Pastorius

Writers
Amanda Dabbs
Colleen C. Derda
Camille Downing
Terra McBride
Cristina Rouvalis
Melissa Williams Schofield
Kevin Taylor
Christine Zapinski

Photographers
Tom Bell
Greg Blackman
Ian Bradshaw
Jim Judkis
Richard Kelly
Kris Radder
Martha Rial
Christopher Rolinson
Frank Walsh

The Point is published by the Department of Marketing and Communications, Point Park University, 201 Wood Street Pittsburgh, PA 15222. Every effort has been made to ensure the accuracy of published information. Please visit our web site at www.pointpark.edu for current information regarding University programs, departments, alumni activities and events.

Nondiscrimination, Equal Opportunity and Diversity Initiatives

This policy affirms Point Park University's commitment to nondiscrimination, equal opportunity and the pursuit of diversity. Point Park University does not discriminate on the basis of race, color, national origin, sex, age, religion, ancestry, disability, veteran status, sexual orientation, genetic information, marital status, caregiver status or familial status in the administration of any of its educational programs, activities or with respect to employment or admission to the University's educational programs and activities. This policy is in accord with local, state and federal laws, including Title VI of the Civil Rights Act of 1964, Title VII of the Civil Rights Act of 1964, Title IX of the Education Amendments of 1972, Section 504 of the Rehabilitation Act of 1973, the Americans with Disabilities Act, Age Discrimination Act of 1975 and the Pittsburgh Human Relations Act. Inquiries regarding these regulations, policies or complaints of discrimination should be referred to the human resources officer, telephone number 412-392-3952. Inquiries regarding Title IX and the Title IX regulations should also be referred to the senior vice president, academic and student affairs, as the Title IX coordinator, or deputy coordinators, the human resources officer or the dean of students.



Image courtesy of LaQuatra Bonci Associates.

New riverfront portal will connect Wood Street to Mon Wharf

Riverlife and Point Park University revealed design concepts for a portal connecting Downtown's Wood Street corridor to the Mon Wharf riverfront during a public presentation on Point Park's campus last March. The designs are the result of a collaborative partnership between New York City-based artist **Nobuho Nagasawa** and **Fred Bonci** and **Natalie Byrd** of local landscape architecture firm LaQuatra Bonci Associates.

The design team was tasked with creating a stronger pedestrian connection between Point Park's Academic Village and the recently constructed Mon Wharf Landing linear park. The design team commission was funded by a grant from The Heinz Endowments and administered by the Office of Public Art. The design concepts were developed by the artist and landscape architects to create a welcoming pedestrian experience that draws visitors, fosters activity and grants access from Point Park's campus down to the lower riverfront park. Nagasawa worked with LaQuatra Bonci to complete an extensive site study and conduct feasibility meetings with project stakeholders and the public over the past several months.

The design features a connected series of sculptural and lighting elements that will guide pedestrians from Wood Street to the Mon Wharf Landing linear park. In the design concept, a 40-foot mast and stay cable structure topped with an LED beacon is positioned over the parking access stairway on the traffic island at the end of Wood Street, signaling pedestrian access to a lighted pathway that ends at a shore-side floating pier. According to the artist, as pedestrians descend the stairs beneath the mast to get to the parking lot, they encounter a jointed skeletal spine, suspended by cables from the Parkway support beams, reminiscent of the bones of a whale and the ribs and keel of a long boat.

Professional Advancement

Megan Ward, Ph.D., assistant professor of English, linked together an unlikely pair — Victorian novels and artificial intelligence — in her presentation "Realism and Robots: The Victorian Novel and Cybernetics" on April 4 in the Lawrence Hall Ballroom. "I...contend that the way the Victorians developed characters through repetition anticipates the way that early artificial intelligence replicated the human almost a century later," said Ward. "Understanding the Victorian novel as a pre-imagination of artificial intelligence not only illuminates Victorian realism or artificial intelligence; it reveals the hidden cultural roots of invention." Ward's research specialty areas include Victorian literature and digital humanities. She helped inaugurate Point Park's Annual Undergraduate Humanities Symposium, held this year on April 20, and she will be attending the Digital Humanities Summer Institute this summer at the University of Victoria.

Helena Knörr, Ph.D., assistant professor of organizational leadership, lectured on "Worldviews of Women's Education" on March 29 at the Student Center. In honor of Women's History Month and the 2012 theme "Women's Education — Women's Empowerment," Knörr's presentation explored education as an empowerment tool for women worldwide.

Kiesha Lalama, assistant professor of dance, was one of four choreographers featured in Dynamic Women of Dance which ran March 9-10 at the August Wilson Center in Downtown Pittsburgh. Lalama's work was called *Torque*. All works in the concert were performed by the August Wilson Center Dance Ensemble, a professional home for many Point Park alumni since its inception



Photo by Tom Bell.

With Marvin at the Symphony

The campus and alumni community celebrated Point Park University's Night at the POPS! with Marvin Hamlisch on Jan. 27. The night featured the PNC POPS! concert, "Marvin, Dave Koz and the Movies," followed by a dessert reception with Hamlisch and Pittsburgh Symphony Orchestra musicians. This special night included a performance by the All-Star College Chorus, eight of whom are Point Park students (they are pictured above with the legendary composer and conductor at the reception). Hamlisch served as distinguished master artist-in-residence at Point Park during the past academic year.

including **Kaylin Horgan**, **Kendra Dennard**, **Nalia Ansari**, **James Washington**, **Annalee Traylor** and **Michael Bagne**.

Robert Skertich, Ph.D., assistant professor of public administration and director of the public administration and undergraduate organizational leadership programs, and Tom Koedel, U.S. veteran and retired police officer, shared their research on the history of Pittsburgh's Cold War air defense on March 29 at the Northland Public Library in Pittsburgh. The presentation focused on the history of Pittsburgh's air defense sites, military technology, and social and political issues.

Channa Newman, Ph.D., professor of French and cultural studies, director of the global cultural studies program, and coordinator of modern languages for the humanities, spoke on "The Genealogy of the Honors Movement in American Higher Education" on March 13 in the JVH Auditorium. Part of the Point Park Global Cultural Studies Lecture Series, Newman's lecture traced the history of the honors movement in the U.S. over the past 100 years and raised questions about the role of honors programs in higher education. The Global Cultural Studies Lecture Series features faculty members from the Department of Humanities and Human Sciences giving

▶ FEEDBACK

Dear Editor,
"I was touched to see my father's photo in The Point ("Branding the Bison," Winter 2012) As Athletic Director, Dean of Students, and Vice President of Student Affairs at Point Park College in the 1960s, Dr. Marvin Buncher contributed greatly to its growth and success. He formed the first Pittsburgh collegiate basketball team and laid the groundwork for scull racing and rowing on the Allegheny and Monongahela Rivers. He also received the Dapper Dan Award for his outstanding contributions to college sports. In the turbulent 1960s, an era of college campus unrest, his forward thinking compelled him to promote student rights. He was a true Pioneer who helped shape the future of today's Point Park University."

Barbara Buncher Gibson
Atlanta, Ga.



THE POINT SPRING 2012

dynamic presentations on a wide range of topics.

Tatyana Dumova, associate professor in the School of Communication, made two peer-reviewed research presentations at the annual National Communication Association (NCA) convention in New Orleans held Nov. 17–20. Her presentations were: "Utilizing Online Surveys and Self-Assessments for Motivating and Engaging e-Learners" and "A Study of the Relationship Between Student Proficiency, Satisfaction, and Perceived Usability of Online Search." Dumova also published an edited book (with Richard Fiordo, University of North Dakota), *Bloggng in the Global Society: Cultural, Political and Geographical Aspects* (Information Science Reference, 2012). The book presents a cross-disciplinary

analysis of the diverse factors affecting blogging practices, traces the diffusion of blogging as a global communication innovation, and sheds light on the current trends in the global blogosphere.

Shirley Barasch, professor emerita in the Conservatory of Performing Arts, composed "Fanfare," a work for brass quartet, performed on Nov. 14 at St. Andrew's Church in Highland Park as part of a series sponsored by the Tuesday Musical Club. Barasch also signed copies of her book, *For Professional Purposes, An Artistic Journey*, on Dec. 1 at the Pleasant Hills Library, and on Dec. 7 at the Barnes and Noble bookstore at Duquesne University. The book traces her experiences as a composer and musician.

Angela Meiers is the new employee relations coordinator in the Career Development Center. Meiers, who received her master's degree in organizational leadership from Point Park in 2010, previously spent several years coordinating events for the Center. With the creation of this new position, the Career Development Center aims to boost the number of internship opportunities and employers recruiting.

New Board Members

Point Park announced the election of two candidates for membership on the Board of Trustees:

Julie A. Lyda is currently Black Box Corporation's vice president of technical product solutions, North America and

Asia Pacific. She has been with the company for 18 years. Prior to her work at Black Box Corporation, Lyda was the materials management supervisor at Pfizer, Inc. Lyda has served on the Executive Committee for the American Cancer Society Premiere Golf Event and is the co-executive chair for the event in 2012. She has also served on the Board of Directors for the Women and Girls Foundation. Lyda holds a Bachelor of Science degree in business logistics from Penn State University.

David J. Peart is the senior vice president of sales for the Pittsburgh Penguins, where he is the chief sales executive and the head of departments that manage the Penguins' local revenue and business development units. Peart also has held positions with the San Francisco 49ers, the Houston Texans and the Texas Rangers/Dallas Stars. He is a member of Point Park University's President's Task Force Advisory Committee and was a Point Park University Distinguished Alumni nominee in 2007. Peart is a founding member of the Board of Advisors of Sports Sponsorship and Sales Program at Baylor University Hankamer School of Business. He has contributed to numerous publications and books on sports management and marketing. Peart is a Point Park graduate with a bachelor's degree in journalism and communications.

Government Leaders Visit the Academic Village

Jack Wagner, Pennsylvania's auditor general, visited Point Park earlier this year to tour the Academic Village Initiative with President Paul Hennigan. He updated Wagner on Point Park's progress so far on the \$244 million academic and economic development project, which has benefited from



Auditor General Jack Wagner (right) with President Paul Hennigan.

investment of state and federal dollars. Hennigan showed Wagner the new Village Park and described the ongoing work on the Wood Street corridor renovations, which include new sidewalks and curbs, street resurfacing, lighting, plantings and pedestrian safety improvements. As the state's auditor general, Wagner is responsible for protecting how tax dollars are spent and ensuring that government operates efficiently and effectively. Wagner is no stranger to the University campus. After serving in the U.S. Marine Corps from 1966 to 1968 and receiving a Purple Heart in the Vietnam War, he returned to Pittsburgh and started his road to a college degree at then Point Park College. Later serving as a member of Pittsburgh City Council, Wagner was an outspoken advocate for the importance of a strong urban core and the impact it has on the Pittsburgh region.

On Jan. 11, Point Park and its community partners also had an opportunity to update Secretary of Pennsylvania Department of Transportation (PennDOT) **Barry Schoch**, P.E. and PennDOT District Executive **Dan Cessna**, on the progress of the Wood Street Corridor development project. Participating in the review were partners from the City Department of Public Works, State Representative **Paul Costa** (D-34), State Representative **Joe Markosek** (D-25), **Gary DeJidas**, president and CEO of GAI Consultants, and **John Coyne** of GAI Consultants.

New Center for Student Success

Point Park has announced the establishment of the new Center for Student Success and appointed a new director of this

area, **Rachel Amos**. The Center for Student Success combines many years of exceptional experience from the Success Centers of the four schools into one comprehensive center. The purpose of the Center will be to provide quality academic and career support so all students can reach their academic, personal and career potential. It is housed on the second floor of the 101 Wood Street Building.

Human Trafficking Panel Discussion

The World Affairs Council of Pittsburgh and the YWCA of Greater Pittsburgh presented a panel discussion and reception on March 15 in the GRW Theater in honor of International Women's Day 2012. "Trafficking of Women and Girls: A Global Challenge in Our Own Backyard" focused on the conditions that give rise to human trafficking. The discussion centered on what can be done in the international community to combat human trafficking, particularly concerning women and girls, and existing strategies that deal with this problem locally.

Panelists included **Mary Burke**, Ph.D., faculty member in the Psychology Department at Carlow University; **Brad Orsini**, supervisory special agent for the Federal Bureau of Investigation; and **Muge Kokten Finkel**, Ph.D., assistant professor of international development at University of Pittsburgh. **Deborah Acklin** of WQED Multimedia moderated the discussion.



SUPPORTING THE JOURNEY...

Make a life-changing journey possible for deserving students with your unrestricted gift to Point Park University's Annual Fund or designate your gift to one of the University's four schools: Arts and Sciences, Business, Communication, Conservatory of Performing Arts.

(Tax-deductible as allowed by law)

To donate online or for more information, visit www.pointpark.edu/annualfund or call 412-392-3999.

**POINT
PARK**
UNIVERSITY

**Second Annual Pioneer
Community Day**

The United Student Government of Point Park University hosted the second annual Pioneer Community Day on Saturday, April 14. The event brought together students, faculty and staff to participate in community service projects in Downtown Pittsburgh and other city neighborhoods. "Last year, we witnessed how this event could help our university community bond through a shared sense of campus pride," said **Anthony Costoulas**, president of Student Government. "USG invited every club, residence floor, school, athletic team, administrative department and office on campus to partake in this day of service. This year we continued the tradition of service to Downtown Pittsburgh and the surrounding area." The day began with a kick-off breakfast in Lawrence Hall, where participants gathered together,

picked up t-shirts and enjoyed breakfast before heading out to the various service projects. At the end of the day, student participants celebrated a successful event at the Dance for Dreams in the Student Center.

Spies in Black Ties

More than 80 students, faculty, staff, alumni and guests attended Point Park's fifth annual "Spies in Black Ties" event hosted last December by intelligence and national security majors in the Society for Intelligence and National Security student group. The event was held at the Harvard Yale Princeton Club, a few blocks from campus, and featured dinner, a ceremonial toast, and keynote speaker **Harry Hayden**. Hayden spoke on behalf of his brother, U.S. Air Force Gen. Michael V. Hayden, former director of the National

Security Agency and former director of the Central Intelligence Agency. "It was great to get together with my peers and celebrate intelligence," said **Patrick Tutka**, a senior intelligence and national security major and president of the Society for Intelligence and National Security. He was inspired to pursue a career in the intelligence and national security field by his uncle, who served two tours of duty in Iraq as an army engineer. **Andrew Gribshaw**, a senior intelligence and national security major and treasurer of the Society for Intelligence and National Security, chose Point Park for its proven track record in helping graduates find employment in the intelligence community. "Having a dedicated undergraduate degree in this interesting field of study will set me apart from the thousands of applicants for jobs within the intelligence community and federal law enforcement.

**Student's Team Wins
Ad Competition**

Ryan Strength, a public relations and advertising senior at Point Park, was a member of the team that won the 2011 "The Pitch" competition, sponsored last December by the Pittsburgh Advertising Federation. Strength says her Point Park education served her well on the project. "I realized that I was able to contribute to all parts of the team effort because of my creative, broad-based education," Strength said. "The Pitch" is an annual competition among local college juniors and seniors studying advertising and related fields. Teams of students are each assigned to a Pittsburgh advertising agency where they put together an entire integrated marketing communications plan, including a video, for a real client in one day. Top professionals then judge and select the winning team.

This year's client was local nonprofit GlobalPittsburgh, which works to improve the region's competitiveness by connecting Pittsburgh communities with international leaders and influencers. "The Pitch" team Strength participated on specifically looked at how to reach international students living and working at universities across the region. Two other Point Park seniors, **Maggie Harpur** and **Katie Gordon**, also participated in "The Pitch" in 2011. The five participating agencies were Brunner, Chemistry, MARC USA, Mullen and Smith Brothers. Strength and other members of the winning team worked with MARC USA. Watch the winning team's video at: www.pointpark.edu/News.aspx?id=462

All-American: Lindsey Oberacker

Point Park University outside hitter **Lindsey Oberacker** was named to the 2011 Capital One Academic All-America



(R) College Division Volleyball First Team selected and announced by the College Sports Information Directors of America on Dec. 12. The College Division portion of the Capital One Academic All-America (R) program is comprised of student-athletes at NAIA, Canadian and junior colleges. Oberacker, who just completed her junior year, is from Erie, Pa. The graduate of McDowell High School has a 3.94 GPA in biology. To be eligible for Capital One Academic All-America (R) honors, student-athletes must first have a GPA of at least 3.30 on a 4.0 scale. Then, they must be selected to the Capital Academic All-District (c) First Team, as Oberacker was. For more on Point Park Volleyball, see page 44.

Dylan Liebhart, a cinema and digital arts student who recently completed his freshman year at Point Park, wrote an essay that was selected for inclusion in the book, *Chicken Soup for the Soul: Tough Times for Teens*, published in February, 2012. "The story that I submitted is one about my personal struggle with depression, and about how I found hope in the darkest situations," said Liebhart. "I am hoping to address these issues and their place in treatment and recovery in my films and writing."

Honoring Martin Luther King Jr.

On Jan. 16, faculty, staff, students and organizations joined together to take part in what's become a tradition as the spring semester begins: events and activities honoring the legacy of Dr. Martin Luther King Jr. The Honors

Program's new Emerging Leaders cohort planned this year's event. The activities included collection of school and art supplies for a Pittsburgh Public Schools elementary school, Pittsburgh King PreK-8, with which Point Park has an ongoing partnership. The school is located in the heart of the city's central North Side, and it is an Accelerated Learning Academy. **Ed Meena**, professor of history, presented a lecture on "The Road to I Have a Dream" in Lawrence Hall lobby. The day ended with a poverty dinner of grilled cheese, tomato soup and drinks, offered for a free will donation, that also benefited Pittsburgh King PreK-8.



Photo by Kris Radder.

Doc Emrick at Point Park

NBC's Emmy Award-winning play-by-play announcer, **Mike "Doc" Emrick**, spoke to Point Park students about sports broadcasting on March 27 at the Student Center. Emrick, who has called NHL games for 32 years and announced the past six Olympics, is one of the premier sports broadcasters in the country. He has called 23 consecutive Stanley Cup playoffs, 13 Stanley Cup Finals and 10 NHL All-Star Games. He now works for NBC full time but previously was the play-by-play voice of the New Jersey Devils and Philadelphia Flyers, in addition to his duties with NBC, Versus, ESPN and FOX. His other credits include NFL games, NCAA basketball games and various Olympic sports. A passionate Pittsburgh



Planned giving means the economy does not control your charitable wishes.

Consider naming Point Park as a beneficiary in your will. You can leave a specific amount to the University or a percentage of your estate.

For a confidential consultation, contact Barb Cinpinski at 412-392-4215 or email bcinpinski@pointpark.edu

www.pointpark.edu

POINT PARK UNIVERSITY

Pirates fan who recently attended the team's fantasy camp in Bradenton, Fla., Emrick also taught speech and was director of broadcasting at nearby Geneva College. His appearance was sponsored by the Pittsburgh Center for Sports Media and Marketing at Point Park University, with the assistance of Point Park's National Broadcasting Society.

SAEM at Performing Arts Managers Conference

A group of Point Park sport, arts, and entertainment management students travelled to New York City to attend the 20th Annual Performing Arts Managers Conference hosted by the International Association of Venue Managers, Inc. last February. The students met with professional arts managers, attended engaging workshops on arts management, and toured entertainment venues throughout the city. "My favorite part was being able to tour various theaters and learn about them," said **Meredith Savage**, a sophomore SAEM major. According to **Teresa Gregory**, SAEM professional-in-residence and the trip's chaperone, students had the chance to see first-hand what it's like to work in a professional arts setting. "The students made excellent contacts and were able to network with arts professionals of international repute" she said.

Fourth Annual Brackets 101

Point Park University hosted its fourth annual Brackets 101, a fundraising event related to the NCAA Basketball Tournament, on March 12 in the Student Center gymnasium. Proceeds from the event benefited the Myron Cope Endowed Scholarship for students in the journalism and broadcasting

programs in Point Park's School of Communication. Brackets 101 provides basketball fans the opportunity to learn about conference rankings, late season records, hot trends, and more as they prepare for the NCAA Tournament. The event included a buffet dinner, brackets packet, sports panel discussion and both live and silent auctions. This year's panelists included **Bob Rager**, Point Park men's basketball coach; **Rick Dayton**, KDKA-TV morning anchor and former sports reporter; **Tracy Foster**, college and professional basketball player; and **Tony DeFazio**, editor of Pittsburgh Sports Report.



Pretty Little Things

Pretty Little Things, a feature film written and directed by Point Park senior **Alex DiMarco**, premiered at SouthSide Works Cinema on Jan. 29. The film traces the story of Tommy Sulner, a comedian (played by Pittsburgh actor Mike Reeping) who performs at comedy clubs around the Pittsburgh area while coping with a range of personal demons. *Pretty Little Things* was shot last summer in neighborhoods such as the North Shore, East Liberty and the South Side. Several crew members were recent

graduates. Students raised nearly \$8,000 through fund-raisers to cover the cost of production.

According to a feature article in the Pittsburgh Tribune-Review, "This was an opportunity for some aspiring film students to become better filmmakers, to get some real-world experience," said **Heidi Schlegel**, a Point Park junior who co-produced the film with DiMarco. "We want people to watch it...but we also want [them] to appreciate all of what's put into a production like this." **Nelson Chipman**, chair of Point Park's cinema and digital arts department, told the Trib that "the ambitious project gave recent film school grads a chance to show their mettle on the screen. It's not like getting a degree in accounting. No one is going to come recruiting you. Here, you have to show a body of work. Not only has it made them better individuals, they'll also have a better grasp on what the real world has in store for them when they finish their studies." Read the article here: <http://tinyurl.com/d6ecu8n>. Visit the film's website and watch a trailer here: www.prettylittlethingsthemovie.com.

Performing Martha Graham's Dance Masterpiece *Heretic*

The Wall Street Journal praised the "...feminine beauty and command of Point Park University's **Mikelle Rindflash** at the haunting center of [Martha] Graham's *Heretic*." Point Park dance students performed the masterpiece of American dance, *Heretic*, at the Joyce Theater in New York City on March 14. "This is a proud moment for Point Park," said Associate Professor **Judith Leifer**. The Conservatory of Performing Arts was among just seven national training programs invited to participate a special University Partners event as part of the



Dance students performed in *Heretic* at the Joyce Theater in New York City. Here soloist Mikelle Rindflash rehearses the role originated by Martha Graham. Photo by Drew Yenchak.

Martha Graham Dance Company's 86th anniversary season.

"For our students to be invited to and to perform a work of such stature reflects extremely well on Point Park's modern dance program. Our dancers are trained to be able to adapt to the rigors of the very specific style of this iconic work," said Leifer. *Heretic*, which premiered in 1929, was restaged and directed by Diane Gray. Leifer served as rehearsal director.

In addition to performing the classic at one of nation's premier theaters for dance, students had the honor of playing a key role in notation of the work by the Dance Notation Bureau, according to Leifer. The national Dance Notation Bureau advances the art of dance by creating dance scores, which function for dance much the same way music scores function for music. Using a symbol system called Labanotation, a notation expert creates a dance score that allows a dance to be performed long after the lifetime of a choreographer and artist such as Martha Graham.

Notator **Sandra Aberkalns** spent a week at Point Park last January taking copious notes on every aspect of the reconstructed *Heretic*. She was accompanied by Gray, who restaged and directed the work based on meticulous research, including a rare 1929 film

of Martha Graham performing *Heretic*. "[The piece] holds a pivotal position in the development of Graham's body of work," says Leifer. "It is essential for our dancers to experience the raw directness of Graham's early developing vocabulary and choreography as the power of the work is in its simplicity."

The Conservatory Dance Company also performed *Heretic* as part of its annual concert at the Byham Theater April 19-21 (a second cast presented the work). In addition, Gray presented an intimate lecture about *Heretic* for Conservatory students and the University community. Several Point Park students cast in the Joyce Theatre performance are videotaped the trip. You can hear their personal stories and details at: www.facebook.com/pointparkdance.

Jazz Dance World Congress

Point Park will host the renowned Jazz Dance World Congress in early August, 2012, a first for the University and Pittsburgh. The five-day event will attract up to 800 dancers, teachers and performers from across the United States and from as many as 20 foreign countries. Giordano Jazz Dance Chicago founded the Congress and co-presents the 2012 event.

Jazz dance enthusiasts will take classes from world-class master teachers, including Point Park assistant professor **Kiesha Lalama**, and witness competitive judging of new jazz dance choreography. Public performances by internationally-acclaimed dance companies will be held each evening at the Byham Theater. For a schedule of the Aug. 1-5 events, visit www.jazzdanceworldcongress.org. A number of Point Park alumni have danced with Giordano Jazz Dance Chicago and Giordano II, including Meghan

Grantin McDermott, Craig Kaufman, Robert McKee, Ashley Lauren Smith, Kate Goddard, Peter Van DeVier, Rachel Berube and Brianna Pazos.



First Lady of Pennsylvania Susan Corbett (left) with Girl Scouts, including Gold Award winner and Point Park student Dakota Dawson (right). Photo by Greg Blackman.

Salute to the Girl Scouts

Point Park helped to pay tribute to the centennial of the Girl Scouts of Western Pennsylvania at a Feb. 16 campus celebration that included a keynote address by First Lady of Pennsylvania **Susan Corbett**.

The event, which included an afternoon tea in the Lawrence Hall lobby and a dance performance by students from the Conservatory of Performing Arts, brought together leaders from the Girl Scouts, the Eden Hall Foundation, and executive women from throughout the region. Philanthropist Elsie Hillman, who invited Corbett, was scheduled to attend but was unable due to illness.

Point Park freshman **Dakota Dawson**, the recipient of a Girl Scout Gold Award, spoke during the formal program, which included proclamations and a flag ceremony featuring members of the Beverly Jewel Wallace Lovelace Girl Scouts troop (which serves girls from underprivileged communities).

"Today we celebrate 100 years of Girl Scouting and the important role it has played in shaping the lives of young women," said Point Park President Paul Hennigan, a former Eagle Scout who remarked that members of his own family have benefitted from opportunities provided by the Girl Scouts and the Boy Scouts. Corbett also praised the positive, lifelong impact of Scouting. "I have very fond memories of the Girl Scouts, from my own experience as a Brownie and senior Girl Scout to serving as a leader of my daughter's own Girl Scouts troop." "Scouting opened up many doors for me," said Dawson, who spent 12 years as a Girl Scout and is now studying intelligence and national security at the University. "I learned that if I push myself, I can accomplish anything."

A Girl Scout Celebration in August

Later this year, Point Park will host the Girl Scouts Grand Celebration on campus August 17-19. The three-day event will bring together Scouts from throughout the region to participate in a variety of free workshops on such topics as "Strong Women in History," social media and photography, as well as many other activities.

In addition, students in a multimedia capstone course in Point Park's School of Communication are creating a micro-website for the Girl Scouts 100th anniversary. Faculty members Heather Starr Fiedler and Thomas Baggerman are working with students to build the site, which will feature video, an interactive map of Girl Scout chapters, and special sections devoted to history, badges, uniforms and, of course, the famous cookies. An interactive feature will

enable visitors to submit their favorite Scouting memories via video, audio or text.

Commencement 2012

Dennis Yablonsky, chief executive officer of the Allegheny Conference on Community Development and its affiliated organizations – the Greater Pittsburgh Chamber of Commerce, the Pennsylvania Economy League of Southwestern Pennsylvania and the Pittsburgh Regional Alliance, delivered Point Park University's commencement address on May 5 at the CONSOL Energy Center. Dr. Maria Simbra addressed the Master's Hooding Ceremony on April 29.



Dennis Yablonsky

A native of the Pittsburgh region, Yablonsky is an accomplished veteran of managing and leading dynamic business growth – as a business leader, a nonprofit economic development professional and a high-ranking appointed government official. He has grown companies from the ground up to a greater profitability and success both in the private sector and as the founding CEO of the Pittsburgh Digital Greenhouse and the Pittsburgh Life Sciences Greenhouse, revolutionary models for the focused growth of technology companies.

Prior to joining the Allegheny Conference, Yablonsky served as secretary of Pennsylvania's Department of Community and Economic Development. As secretary, he played a lead role in the development and implementation of an economic stimulus program that featured more than \$3 billion of investment in the Commonwealth's infrastructure, core communities and job-producing businesses. He also helped develop the governor's \$650 million energy fund, designed to grow the energy economy in Pennsylvania.

Yablonsky spent the first 24 years of his career working for and leading two successful software companies: Cincom Systems in Cincinnati, Ohio and the Carnegie Group in Pittsburgh. At Cincom Systems, an independent software company, he progressed through the company's organization to eventually become chief operating officer and to help grow the company into a \$125 million global organization. In 1999, Yablonsky became the founding CEO of the Pittsburgh Digital Greenhouse and, in 2001, the Pittsburgh Life Sciences Greenhouse, innovative models for doing technology-based economic development.



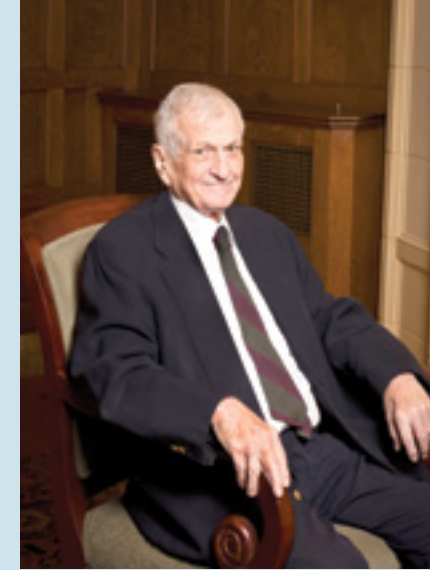
Dr. Maria Simbra

Dr. Maria Simbra is a physician and Emmy award-winning medical journalist who brings a unique set of

skills to her position as a reporter on KDKA-TV. A member of the KDKA news team since 2002, she provides expert and informative reports on a range of health care issues.

A physician who earned her master's degree in journalism and mass communication from Point Park in 2003, Simbra has been recognized with the Award of Excellence from the National Association of Medical Communicators in 2006, two nominations for a Mid-Atlantic National Association of Television Arts and Sciences Emmy Award in 2006 and 2007, and an Emmy award in 2008. She was named to Pittsburgh Magazine's "40 Under 40" list that recognizes influential young people in the region. She has also served on the board of directors for both the Association of Health Care Journalists and the National Association of Medical Communicators.

Simbra has been a clinical assistant professor of neurology at the University of Pittsburgh Medical Center and, prior to that, was in private practice neurology in Beaver County. She has taught both journalism students and medical students at universities in the Pittsburgh region. She is also pursuing graduate studies in public health, with a special focus on how the mass media affects public health. ❖



IN MEMORIAM

Dr. George R. White

George Rowland White, Ph.D., a long-time member of the Point Park University Board of Trustees and significant benefactor of the University, passed away on Jan. 14 after a long illness. "George White was a long-time supporter of Point Park University and was committed to assisting Point Park's efforts to transform itself as a university and an agent of change in Downtown Pittsburgh," said Point Park President Paul Hennigan. "He made significant contributions to our Board, support of our Conservatory of Performing Arts, and in many other ways."

Tireless and forward-thinking

A dedicated supporter of culture and the arts at Point Park and in the City of Pittsburgh, George White actively sought to engage, challenge and better not only the Point Park community, but also the greater community in which he lived and worked for nearly 25 years. "His tireless pursuit of progressive solutions, forwarding-thinking strategies and collaborative partnerships defined him as a community leader and passionate investor in the future of our region," said Hennigan. "George White will be greatly missed by all those who had the privilege to know him and work with him. We extend our deepest sympathies to his wife of many years, Kathleen, who, with

George, has been a valued member of our Point Park family. "

Named a member of the Point Park University Board of Trustees in 1995, George White received his bachelor's degree from Wesleyan University, a master's degree from University of California Los Angeles, and a doctorate from Iowa State University. White spent most of his career in industrial engineering. After spending nearly two decades with Xerox Corp. in product development and engineering, White transitioned to a career in higher education at Harvard University and then the University of Pittsburgh Applied Research Center and School of Engineering.

A dedicated friend

Upon retirement, White took an active role as a member of Point Park's Board of Trustees, serving on various committees and becoming the Library Center Program manager, overseeing the development and construction of a state-of-the-art library. As a donor, White supported the Conservatory of Performing Arts with the George Rowland White Theatre and three George Rowland White Dance Studios, in Point Park's Gold LEED certified Dance Complex built in 2007. In addition to serving on Point Park's Board of Trustees, White also served on the boards of the Pittsburgh History and Landmarks Foundation and the Pittsburgh Opera.

Last year, the Whites established the George Rowland White Endowed Professor of Accounting and Finance at Point Park University's School of Business with a \$1 million bequest through their estate plan. With that bequest, together with prior cumulative gifts from the couple, they became the second largest benefactors in the history of the University.



Left: Andrew Halasz and Noel Schermaier, artist and illustrator, install "Main Feature: Now Playing." Photos by Chris Rolinson.



Above: "Stopped Train from a Moving Train" by Pennie Brantley
Right: "Memories of Loss" by Janese Hexton.



AROUND THE NEIGHBORHOOD

Take a stroll through the Academic Village to see new exhibitions, a new restaurant and much more

Project Pop-Up at Point Park

The creative efforts of faculty and students in the University's Photography, Photojournalism and Cinema and Digital Arts programs are showcased in Project Pop-up, a year-long effort to fill various empty Downtown storefronts with new, temporary tenants, ranging from art installations to functioning retail businesses.

A collaboration among the mayor's office, the Pittsburgh Downtown Partnership, the Urban Redevelopment Authority and participating artists and entrepreneurs, Project Pop-up includes Point Park installations at 422 Wood Street. Chris Rolinson, assistant professor of photography, and Andrew Halasz, assistant professor of cinema and digital

arts, led the projects. "COMmunity" is a photographic based installation comprised of morphing photographic portraiture, analog televisions and a wall of personalities and identities. The images are seen in a video format and meld together. As the work evolves visually, the original portrait becomes a composite of many different students.

According to Rolinson, "not only are we energized by the prospect of putting vacant storefronts to use as aesthetic masks, but also by the opportunity to create visually stimulating and thought provoking work for our students and fellow Downtown residents and commuters." For the Cinema installation, "Main Feature: Now Playing," Halasz said

that the team "hoped that the combination of a lit-up theater façade, the occasional bursts of laughter from the audience, and the projected image of an audience watching Wood Street as if it was a movie engages those passing for a few minutes - makes them think or laugh.

"The most interesting aspect of creating this installation was the evolution of people's perceptions of the space as it was being put together. We fielded many questions about the 'theater' that was coming in," said Halasz. "People approach it expecting an actual movie house. Once they see the projection, the majority seem to get it"

From a Different Point of View

An exhibition of contemporary art from the National Association of Women Artists (NAWA) is the latest show to grace the new art gallery in the lobby of Lawrence Hall.

"From a Different Point of View" opened in March (the 25th anniversary of Women's History Month). The first NAWA exhibition held in Pittsburgh, the show features 21 outstanding works selected from among 200 submissions, including oil paintings, watercolors, mixed media, linocuts, photography and sculpture. Eric Shiner, director of the Andy Warhol Museum, selected the pieces showcased in the exhibition, which was brought to Point Park through the leadership of art collector and University Trustee John Tomayko, Ph.D.

The oldest professional women's fine art organization in the United States, NAWA was founded in 1889 as the Women's Art Club. It was established as a professional group open only to serious artists who would have to pass through a jury of admissions to be accepted into membership. Many renowned artists have been associated with the NAWA, including Edith Mitchel Prelevity (a co-founder), Mary Cassat, and Louise Nevelson. The exhibition, which runs through May 19, is free and open to the public.

A Taste of Osteria 100

The University community and its Downtown neighbors will soon be able to enjoy a delicious Italian menu on campus at a new restaurant at the Village Park.

Osteria 100, scheduled to open in late spring or early summer 2012 at Wood Street and the Boulevard of the Allies, is part of the new Village Park that officially opened last September.

Surrounded by a canopy of trees, colorful plantings, a colonnade and a stunning glass stair tower and fountain, the lively restaurant will border the south edge of the Park and feature indoor and outdoor dining areas. Design considerations for the restaurant and Park included making both "transparent" to each other. The large windows along the Park can open in mild weather to provide view and ventilation to the restaurant. At night, the lights of the restaurant will act as a draw for activity.

Osteria 100 is the third in the city for restaurateurs Tom Trimm and Chuck Hammel, owners of Cioppino Restaurant and Cigar Bar and Osteria 2350, both located in the Strip District.

Osteria (pronounced O-sta-REE-a) refers to a casual Italian eating establishment, similar to a tavern but less formal than a ristorante or trattoria, that offers seasonally prepared dishes featuring local ingredients.



According to Leisa Anderson, director of sales and marketing, diners can expect to savor such signature dishes as House Made Potato Gnocchi Baked with our House Made Marinara and Cheeses, as well as our Meatball Sub with House Made Marinara and Parmesan, and our Fresh Tomato and Mozzarella Salad with Extra Virgin Olive Oil and Balsamic with Fresh Basil. ❖



TOP PSYCHOLOGY by Colleen Derda

Psychology professors Brent Robbins, Ph.D. (right) and Robert McInerney, Ph.D. co-chaired the national conference of the Society for Humanistic Psychology held last March at Point Park. *Photo by Martha Rial.*

University hosts national conference, builds academic programs and fosters original research

When members of the Society for Humanistic Psychology arrived at Point Park's Lawrence Hall for their national conference in March, the first thing they saw was an exhibit of student works.

Scheduling the poster session to welcome attendees and, in effect, launch the event was a natural choice for Conference Chairpersons Brent Dean Robbins, Ph.D., and Robert G. McInerney, Ph.D., because preparing students for research lies at the heart of their work at Point Park.

Robbins, assistant professor and coordinator of the University's psychology program, and McInerney, assistant professor of psychology, encouraged the

Society to come to Pittsburgh and Point Park for its fifth conference, then worked with the American Psychological Association division to plan four days of symposiums, panel discussions and dialogues. In addition to assisting students as they completed original research for the poster session, the Point Park faculty members introduced their undergraduates to leaders from the fields of humanistic and existential psychology.

The conference was deemed a success on many levels. "Person, Consciousness and Community" attracted a record number of professionals from across the country to discuss theoretical and practical applications of the person in the context of community. A significant number were early

career psychologists and young faculty and scholars.

Young Practitioners Lead Renaissance

Robbins says the age of participants reflects a "renaissance" in psychology underway across the country.

"Increasingly, young practitioners are starting with a humanistic understanding of the person," he says. And Point Park's psychology program, he notes, is directly in line with the movement.

Point Park's Bachelor of Arts in psychology focuses on the study of human science psychology that includes existential, cross-cultural and post-structural theories. The program provides students with an understanding of the ethical foundation of psychology and fosters activist perspectives that consider the well-being of persons and their communities.

"We are interested in questions of human experience," says McInerney. "At Point Park we encourage critical and holistic thinking, such as 'what is the person experiencing? It's a perspective that often gets neglected.'"

Robert Fessler, Ph.D., acting dean of the School of Arts and Sciences and long-time member of the psychology faculty, says in recent years he has seen a shift in students' knowledge of the program. Today, he says, a number are majoring in psychology at Point Park because they want to become clinicians or scholars and they are aware of the University's growing reputation for preparing students well for graduate-level studies.

"We are molding students to succeed in graduate school," says Fessler. "And we are doing it by teaching them what is required to undertake rigorous qualitative research."

In Robbins's research methods class this spring, students collected data on how individuals experience joy. The juniors and seniors presented their results during the Society for Humanistic Psychology's national conference and are currently working with Robbins to prepare the research and develop an academic paper. Robbins will also include the work in his own book about joy.

Another senior recently completed a thesis on the experiences of individuals in interracial relationships. With the help of her professors she is now gathering additional data and integrating the results.

Students in the program can work with faculty independently on projects and assist with the time-intensive work of preparing research to be considered by peer-reviewed journals.

"Not many schools provide undergraduates with the opportunities that Point Park provides," says McInerney.

Confluence Psychology Alliance

The assistant professor has been at Point Park for six years. Several years ago he helped students organize Confluence Psychology Alliance, a club open to all majors offering "a place for multiplicity and diversity of thought, community, friendship and activism." The group's events, which have included lectures on Buddhism and consumerism, poetry readings and service projects, attract a wide following. Every fall members present their original research projects to the group and the public. "Confluence members are passionate intellectuals," says McInerney.

During their academic studies, psychology students complete course work in the foundations of psychological thought and classes such as Social Psychology, Psychology of Emotion

and Community Psychology. They have opportunities to concentrate on specific topics starting their sophomore year and to pursue challenging internships as juniors and seniors.

William Purcell, Ph.D., associate professor and chair of the Humanities and Human Sciences Department, and Professor Sharna Olfman, Ph.D., round out the Psychology Department faculty.



This spring, Olfman and Robbins released a book, *Drugging Our Children: How Profiteers are Pushing Antipsychotics on Our Youngest, and What We Can Do to Stop It*. Robbins also was in the news for co-authoring an open letter that resulted in an extended national debate about proposed changes to the "bible" of mental health, the *Diagnostic and Statistical Manual of Mental Disorders*, or DSM.

The "Person, Consciousness and Community" conference included a symposium about the DSM-5 revisions, one of the hottest topics in psychology today. And Point Park University students, of course, had front row seats. ❖



Point Extra
Watch a video at www.pointpark.edu/the-point.

Evolution of **BIOLOGICAL SCIENCES**

Programs prepare students for medical school, graduate studies and a diversity of professional options

by Cheryl Valyo



Graduating senior Maria Fusco at her internship at the National Aviary in Pittsburgh.
Photo by Chris Rolinson.



Associate Professor Laura Frost (left) works with students and staff in the laboratory.
Photo by Frank Walsh.



Franco Sebastiani (A&S '11) in the lab at Point Park.
Photo by Chris Rolinson.

When Maria Fusco entered Point Park as a dance major, she never would have predicted that in 2012 she would instead be graduating with a degree in biological sciences and a career goal of veterinary school.

Sidelined with an injury, she decided to pursue her longstanding interest in biology and chemistry and found her niche in the natural sciences at Point Park. As a senior this year, Fusco put her academic training to work in an internship at the National Aviary in Pittsburgh.

"It has been a wonderful learning experience that has allowed me to come to a better understanding of the inner workings and operations of a zoo and how proper training of birds is implemented," said Fusco.

Point Park's natural sciences faculty and programs are providing students with many diverse opportunities to pursue academic excellence, prepare for medical school and graduate studies, and engage in challenging undergraduate research projects.

Associate Professor Laura Frost, Ph.D., who joined the faculty seven years ago, says Fusco is one of many outstanding science students at Point Park. "I have seen our program grow in leaps and bounds. The quality of students we are getting is just phenomenal," says Frost, who is also a faculty leader in the University's Honors Program.

Pre-Med at Point Park

Point Park's Department of Natural Sciences and Engineering Technology recently initiated a bachelor of science

degree in premedical and preprofessional studies that allows accepted students to position themselves for successful matriculation into professional schools of their choice, such as medical school, dental school, veterinary school, pharmacy school and other graduate programs.

Developed by department chair and Professor Mark Farrell, Ph.D. in collaboration with Frost and other faculty, the program builds upon the University's long-standing biological sciences degree coursework. Students also receive targeted guidance, including hands-on preparation for the MCAT/GRE and similar exams, from experienced faculty who take a personal interest in each student. Although faculty had long provided individual guidance to students, "we wanted to create a more complete and comprehensive program of study

that would provide students with all of the academic prerequisites they would need to be prepared for the content on the MCAT and similar exams," said Farrell. "We also added a zero credit seminar to help students learn what the MCATs are, what they can expect when they prepare for them and also provide some review."

In the biological sciences program, students can pursue work in such areas as molecular biology, environmental health, human biology, human genetics, immunology, microbiology, organic chemistry and toxicology. There are also three new concentrations available: molecular/cellular, organismal and environmental science.

Succeeding in Science

The success of graduates is a testament to the preparation provided by Point

Park. For example, Franco Sebastiani, a 2011 graduate of the biological sciences program, was accepted into multiple dental schools throughout the nation. He is now a student at the University of Pittsburgh's School of Dental Medicine with the goal of specializing in oral and maxillofacial surgery.

Throughout his four years at Point Park, Sebastiani received multiple academic and athletic awards including the Natural Sciences and Engineering Technology Graduating Senior Award and the NAIA Men's Basketball Academic All-American Award. Sebastiani graduated with a 4.0 GPA and was the point guard for Point Park men's basketball team. He also delivered the graduating senior speech at the University's 2011 commencement. "Franco maintained an excellent academic record in a very demanding program while preparing himself to follow his goal to become a dentist,"

said Farrell. "He took advantage of the opportunities at Point Park and made the very best of them."

During his junior and senior year Sebastiani performed dental genetic research as a dental registry and DNA repository clinical investigator and laboratory technician for the University of Pittsburgh School of Dental Medicine. "All of the professors truly care about their students and want to see them succeed," says Sebastiani, who attributes Point Park's "aggressive biomedical curriculum" for giving him a solid foundation in science and chemistry for dental school. ❖



Point Extra
Watch a video at www.pointpark.edu/theoint.

Discovery Channels

Point Park researchers Michelle Guaragno and Mark Farrell discover a novel chemical process with extraordinary possibilities

by Cheryl Valyo

It started out as an undergraduate research project in Point Park's laboratories.

Just three years later, the scientific discoveries made by Michelle Guaragno (A&S '10) and Professor Mark Farrell, Ph.D. have formed the foundation for Marelle LLC, a new company that will develop commercial applications for a novel chemical process that can be applied to a wide range of compounds such as antioxidants, ultraviolet light (U.V.) blockers and non-steroidal anti-inflammatory drugs.

"This project evolved in an unusual way," recalls Guaragno, who in 2010 earned her bachelor's degree in biological sciences a year early (with a 3.98 GPA) and went on to receive a master's degree in biotechnology at Duquesne University. She is now completing her M.B.A. at Point Park's School of Business and teaches organic chemistry as an adjunct faculty member.

"As a Point Park undergraduate, I wanted to initiate a research project, and Dr. Farrell had experience with a particular compound. We began working together and were amazed to achieve success in the lab on the first try. That rarely happens. You can work for years in the lab and not be successful."

A Novel Process

The essence of Guaragno and Farrell's discoveries was to employ nanoparticles, commonly called fullerenes, to enable water insoluble substances to become water soluble. Their "Marelle Process"

allows commercially valuable compounds (approved by the FDA and the EPA) to retain their fundamental desirable properties and now be used in previously impossible ways, explains Farrell.

Not only does the Process allow these substances to maintain their essential biological and chemical properties, but in some cases increases their utility as much as 200 to 300 fold, he says.

The new technology achieves what other researchers have attempted without success—making the insoluble soluble by utilizing a remarkably efficient sequence of reactions that employ readily available materials and reaction conditions that are safe, efficient and adaptable.

Guaragno and Farrell describe the Process as flexible, economical and ideally suited for commercial manufacturing. It can be utilized for small-scale production of compounds for specialized applications in scientific or medical research, or for large-scale production of chemicals for use in skin care products and cosmetics.

As the team continues the bench top or laboratory phase of the research, they see promising potential in topical or cosmetic applications. "We've been able to show that the compounds we make have antioxidant properties that are enormously more powerful than what is currently available on the market," says Farrell. "In other words, very little is needed to achieve the oxidizing power that existing products have. So that's where we hope to make the initial entry into the market"

Growing a New Business

Marelle (derived from Guaragno and Farrell's first names) filed a patent application for their Process and several novel products last January. The company has been accepted into the Life Sciences Accelerator Program at the Idea Foundry and the team has also worked with such organizations as Innovation Works and the Institute for Entrepreneurial Excellence in Pittsburgh. Development of a business plan that identifies initial markets (and the best way to gain entry) is now underway.

"We are networking to get the name of Marelle out there and trying to find out where this technology will lead us," says Guaragno. "Right now we are focusing on cosmetics, but there is also potential in the nutritional market and pharmaceuticals market, as well as licensing opportunities for the technology."

"We're open to all of the possibilities, as we determine what we want Marelle to be – now and in the future."

Guaragno, who as a graduating senior had planned a career in medicine, found she was "fascinated by the business of science." She switched gears to pursue an M.B.A. at Point Park and will eventually gain her Ph.D. "I want to be CEO of this company," she says.

"Marelle is truly Michelle's inspiration. The vision is hers," says Farrell. "She is an alumna, a graduate business student, an adjunct faculty member and now a business partner with the University. She is an incredible young woman."

"Marelle is truly Michelle's inspiration. The vision is hers. She is an alumna, a graduate business student, an adjunct faculty member and now a business partner with the University. She is an incredible young woman," says Farrell.

Photo by Jim Judkis.

THE POINT SPRING 2012

POINTPARK.EDU

POINT PARK BY THE NUMBERS 2012

The Student Center, a true campus hub that provides recreation and fitness facilities as well as space for meetings and other activities in the renovated former YMCA on the Blvd. of the Allies, logs an average of 7,000 individual student visitors each month. This is a 40 percent increase from the previous year.



The Pittsburgh Playhouse at Point Park University welcomed 32,882 patrons last year. They enjoyed productions ranging from *A Chorus Line* and Shakespeare's *Twelfth Night* to *The Jazz Nutcracker* with original choreography by Professor Doug Bentz.

On any given day on campus, approximately 50 dance classes take place in Point Park's eleven dance studios.



After the most recent induction ceremony in October, there are 37 members in the Pioneer Athletic Hall of Fame.



Number of major league baseball positions played by Don Kelly (BUS '06), a utility man in his fifth year with the Detroit Tigers and a member of the Pioneer Athletic Hall of Fame. With an appearance as catcher for the Tigers last season, Kelly has now played all 9 available positions needed to complete a career lap around the MLB diamond.

Among the campus population at Point Park in the spring 2012 semester there were 87 students from 34 different countries, including some as far away as Kazakhstan, Turkmenistan, Syria, Costa Rica, Israel and Saudi Arabia.



Point Park University's Facebook page has 5,254* likes, with 3,855 monthly active users. @PointParkU has 2,702 followers on Twitter and is worth \$777 according to TweetValue.com.

*As of March 29, 2012.

Inclusive Education

Professor Jamesena Talbott leads the efforts to foster diversity and inclusion within the campus community

by Camille Downing



Photo by Martha Rial

◀ POINT to VIEW

Jamesena Talbott, D.M., is the new inclusion coordinator for the Office of Academic and Student Affairs at Point Park and an associate professor in the Department of Global Management Organization in the School of Business, where she has taught since 2001. **Jamie Talbott's** background is steeped in organizational development. She has more than 20 years of experience working in administrative and leadership roles. She received a doctor of management in organizational leadership from the University of Phoenix; a master of arts in counseling psychology from Waynesburg University; and a master of arts in public and international affairs from the University of Pittsburgh. She recently talked with The Point about inclusion and how it can make a meaningful difference in the lives of students and the campus community.

What exactly is an inclusion coordinator?

JT: My job is to talk to the campus community about diversity, understand and define what inclusion is, how an inclusive environment feels, and identify what programs and services they would like to see on campus. My other hat is to work with students and groups about how to cultivate diversity and inclusion in their programs and practices. This will include speaking with incoming students who are in culture shock as they adjust to a campus life that is different from their own background. For these students, they are learning where they fit in, how

POINTPARK.EDU

to navigate the system, and how to handle this diverse multicultural world that they will live in for the rest of their lives. Today, social media and technology provide more access to ideas, openness, and a bias that is formed in an instant. Students also are learning to work on a campus that has three or four generations of people with different views and opinions. I will help to guide them in how to bring all of this together so they don't just jump to conclusions, but find an answer and also think and build relationships. I will also meet with faculty to create opportunities that helps meet their needs in hiring with a focus on recruitment and retention.

What kind of progress have you made in your first year in this position?

JT: The first year has been all about collaboration. I have been meeting with student groups and getting information on how they feel about campus life and developing a process so people better understand what is available to them campus wide. I have also begun to work with various groups that don't know or don't take advantage of the programs on campus, such as evening and weekend students. We are trying to figure out how we can replicate programs and

offer them at different times to meet this group's needs.

Why is inclusion so important for students?

JT: Students need to be a part of something meaningful – something that helps them find a place where they fit in, know they have a voice that can be heard, and where they can make a difference. Students want to build what others have missed. Helping first-time students learn to navigate better will eventually carry into their work world as they navigate into the unknown and begin to feel more comfortable on the job.

I also see it as helping students adjust to life – lifelong learning, knowing how you fit in, and what kind of person you want to be in life. This leads to a question of how do I 'pay it forward' to touch others? And how can I affect the environment where I am working to help someone new walking in the door figure it all out.

What is your overriding goal for inclusion at Point Park?

JT: My goal is to create an environment where students don't just come to class and leave. We are an urban community, so we need to determine what are the expectations and needs of all of our students. If we can get different answers that represent the full spectrum of ideas of what a university is today, then we can implement programs that meet the wants and the needs of students. ❖



Point Extra

For more conversation with Jamie Talbott, visit The Point online at www.pointpark.edu/the-point.

FOR THE CHILDREN

Professor Lorelei Stein is an advocate for children with parents behind bars in Allegheny County

By Cristina Rouvalis

Lorelei Stein, Ph.D. was stunned when she first heard the statistic: **On any given day in Allegheny County, there are 7,000 children with a parent in jail or prison.**

"All I could think of was the sadness and emptiness that these children must face without the love, support and guidance of that missing parent," said Stein, the program director of Point Park University's graduate program in Criminal Justice Administration.

Stein first learned about the problem of children with parents behind bars during a 2006 conversation with Claire Walker, Ph.D., executive director of the Pittsburgh Child Guidance Foundation (PCGF), and it stuck with her.

That conversation spurred her interest in researching the issue of children of the incarcerated, who live in every zip code, in affluent suburbs and in poor city neighborhoods. Always looking for research opportunities for her criminal justice students, Stein agreed to form a five-year partnership with PCGF in which the foundation funded a Point Park graduate intern every year, starting in 2006.

Pioneering a Policy

Mentored by Stein, the graduate interns did research for a county task force that was developing police guidelines for children during the arrest of a parent. Until then, there had been no set policy in Allegheny County, adding to the stress on a child who sometimes watched a parent get handcuffed and led to a police cruiser.

Sometimes a police officer would wait with the child at a neighbor's house until a relative showed up, Stein said. Other times the child would go to the county's Children and Youth Services. "Regardless of their circumstances, children of the incarcerated often become invisible."

New guidelines, which were implemented as part of a pilot program for the City of Pittsburgh in 2009, suggested that whenever the situation permitted, police officers were to handcuff a parent in a different room from the child, ask the arrested parent about an assigned caregiver, and arrange for the caregiver to pick up the child at a safe place. "We want to honor the parent's request to keep the child within the family," Stein said.

As the task force developed training for police officers, another Point Park student did research for the group.

Walker, the PCGF executive director, said she was impressed by Stein's dedication to the problem of children of the incarcerated. "She found the issue compelling and she did everything she could to address the issue. She really engaged people at the University."

For example, Stein's students held a fundraiser to buy books and games for the Allegheny County Jail's Family Activity Center, which gives children a place to play while they wait to visit a parent or other relative behind bars.

On a Mission

Helping the children victimized by the criminal justice system is just one way in which Stein, who also chairs Point Park's Institutional Review Board, has made her mark on the University.

Stein also has placed four graduates of the program in positions at the jail, including some in the reintegration program that prepares released prisoners for their return to society.

"We ask students to reach beyond what they already know and the skill set that they already have," she said. "They have done some superb work."

"We ask students to reach beyond what they already know and the skill set that they already have, and they have done some superb work."

Lorelei Stein, Ph.D. in Lawence Hall.

Photo by Martha Rial.

Stein is also stretching herself with a research project on juveniles in prison or jail in conjunction with the National Center for Juvenile Justice in Pittsburgh.

She became interested in incarcerated teenagers in 2009, when she asked former warden Ramon Rustin how many juveniles were in the county jail. She was shocked to learn there were 35, all but one a boy, and all being tried as adults on homicide charges and facing many years behind bars.

Stein knows a lot more about the county's jailed teenagers today. "We are developing a rich, descriptive picture of who the juveniles are coming through the jail, the age of their arrest, the history and their charges. How did they get there? They represent a failure of the system."

Finding 'Lost' Children

While some teens grew up in poverty and tough family circumstances, others are from stable families, she said. "Some

of these juveniles come from wonderful families," she said. "Somewhere along the lines they have gotten in with friends who have taken them off track. They are almost a 'lost' child."

Stein approaches her job as program director from a multidisciplinary approach. A registered nurse anesthetist, she has been a program director for nurse anesthetist programs and has developed classes on advanced research methods.

With a Ph.D. in higher education and policy analysis, she teaches her criminal justice students to broaden their skill sets in order to expand their career options. "This generation will have multiple careers," she said. "They need to understand they need to develop a broad base of skills."

"I don't care how much money you have. You can only drive one car at one time. You can only live in one house at one time. It's your knowledge base and skill set that will always open the door." ♦

HONOR ROLL OF BENEFACTORS ▶

Point Park University gratefully acknowledges the philanthropic support received from alumni and friends in support of the University vision to become one of the most dynamic urban universities in America.

FOUNDERS SOCIETY

The Founders Society recognizes the first 100 individuals who make a lasting commitment to Point Park University in their estate plans.

Francine Dinneen Abraham, '84
 Dennis and Jill Astorino
 Jacqueline Clarke Havrilla, '73
 Nancy Davis-Kahrs, '69, '72
 David Duncan, '79
 Robert J. Everett, '71
 Jacqui Fiske Lazo
 Francis Forgacs*, '02
 Wilmer E. Fox, III, '94, '96
 Rick Haskins, '71
 F. Tracy and Dr. Katherine Henderson
 Paul and Colleen Hennigan
 Karen Hill, '70
 Don '70 and Marilyn Jenkins
 Linda Conn Kistler, '72
 George E. Marin, '73
 Nancy Paule Melone, Ph.D and
 Timothy W. McGuire, Sr., Ph.D
 Charles J. and Karen S. McIntyre
 Harry J. Mertz, '71
 Dr. Charles Quillin
 Richard E. Rauh
 Betty Lou Sarafin, '90, '90
 Susan Kubik Scott, '74
 Twila Simmons-Walker, '04, '06
 Patrick W. Sinopoli, '78
 Mrs. Carol Ann Riden Spendiff, '72
 Steve, '70, '11H and Joann Stein
 John R. Tomayko, Ph.D
 Drs. Milton, '02H and
 Nancy Washington
 Dr. George R*. and
 Mrs. Kathleen White
 John Yugovich*, '69

PRESIDENT'S CIRCLE

Members of the President's Circle support the University's Annual Fund with a leadership gift of \$1,000 or more during the Fiscal Year.

Ronald Allan-Lindblom
 Dennis and Jill Astorino
 Trudy Avery, J.D.
 William Blair, '68
 Jon, '73, '99H and Donna Boscia
 Richard and Anne Marie Boyd
 Mike and Susan Boyle
 Mark Broadhurst
 Nancy Bromall, '73
 Elmer Burger, II
 Mr. William Cameron and
 Dr. Cathy Cameron, '93, '99
 Guy Catania
 Gary Davis, '67
 Debra Konieczka, '82 and
 Michael DeCourcy, '81
 Elizabeth Dedrick
 Claudia DiNardo, '72
 Helen Fallon, '75
 Richard Finley, '70
 Mariann and Dr. Stan Geyer
 Kishore, '75, '76, '03H and
 Shealagh Gopaul, '76, '76, '10H
 Thomas Grealish
 Joseph R. Greco, '71
 Dr. and Mrs. Charles R. Grubb
 Joseph Guzzo, '89
 Maria Guzzo, '89
 Edward Haberle, '79
 Rick Haskins, '71
 F. Tracy and Dr. Katherine Henderson
 Paul and Colleen Hennigan
 T. Dixon Holladay, Jr.
 Don, '70 and Marilyn Jenkins
 Argie Leech
 Bridget Mancosh
 Nancy Paule Melone, Ph.D and
 Dr. Timothy W. McGuire, Sr., Ph.D

Dr. Karen McIntyre
 Kevin and Kristen McMahon
 Paul Meese, '65
 Cheryl and Jimmy Miller, '80, '00H
 JoAnn Brown Moller
 Todd and Miriam Moules
 Sue Nicklin, '70
 Kathy Pape
 Lisa Patterson, '06
 Keith Paylo
 Richard Pegher, '74
 Dr. Charles and Ruth Perkins
 Lucas Piatt
 Dr. Charles Quillin
 Gregory Rogers, J.D.
 Drs. Ellen A. and Loren H. Roth
 Carol Savage, '73
 W. Gregory Schmid, III, '81
 James Schnare, '74
 Angelo Sciulli Jr., '72
 Dr. J. Matthew, '07H and
 Dr. Janet Simon
 Philip, '80 and Ann Smith, '80
 Steve Stein, '70, '11H
 Charles and Jean Stout
 Joe Stuligross
 John R. Tomayko, Ph.D
 Leslie Toth, '69
 Andrea J. Wachter, '84
 Edward C. Wachter, Jr.
 Karen Farmer White
 Michelle Wilden, '96, '97
 MARC USA/Stuart M. Zolot, '92

TRUSTEES

James and Francine Dinneen Abraham
 Dennis and Jill Astorino
 Richard and Anne Marie Boyd
 Mike and Susan Boyle
 Mark Broadhurst
 Dennis Cestra
 David Duncan
 Richard Finley
 Jacqui Fiske Lazo

Kishore and Shealagh Gopaul
 Edward Haberle
 Joseph Havrilla
 Mr. and Mrs. C. Talbott Hiteshew
 T. Dixon Holladay, Jr.
 Don and Marilyn Jenkins
 Anne Lewis
 Nancy Paul Melone, Ph.D and
 Timothy W. McGuire, Sr., Ph.D
 Kevin and Kristen McMahon
 Paul Meese
 Cheryl and Jimmy Miller
 Todd and Miriam Moules
 David Peart
 Lucas Piatt
 Richard Rauh
 Drs. Ellen A. and Loren H. Roth
 Carol Savage
 Steve Stein
 Charles and Jean Stout
 John R. Tomayko, Ph.D.
 Drs. Milton and Nancy Washington
 Karen Farmer White

ALUMNI

1961

Julia Johnson
 Helen Maddocks
 Mary Catherine Mason
 Margie McCall
 Nancy Reedy
 Naomi Sapir

1962

Andrew Caliguiri
 Adrienne Hughes

1963

Lloyd Holland
 Barbara Osinski

1964

Margaret Jamieson
 Marie Kirchner
 Warren Pete

1965

Dennis Champ
 Samuel Cover
 Karen Kurimcak
 Paul Meese
 Judith Utt

1966

Thomas Little
 Frank Long

1967

Joyce Bowers
 Geraldine Brennan
 Gary Davis
 Emma King
 Carol Neely

1968

Frank Barbosky
 William Blair
 August R. Derito
 Sandra Dolence
 James Krut
 John Lender
 William Maneese
 Donald Martini
 John McFarland
 Beulah Moody
 Joseph Panarella
 Janice Rihely
 James Schafer
 Peter Townsend

1969

Joann Andrus
 Norman Armonat
 Kenneth Blair
 Nancy Davis-Kahrs
 Richard Dyer
 Cecia Hess
 Michael Katora
 David Pantalone
 Raymond Pastorek
 William Reed, Ph.D.
 Robert Ripley
 Jan Gruber Rygert

Deborah Saline
 Robert Saline
 William Shuty
 Leslie Toth

1970

Douglas Anderson
 Michael Baran
 Theodore Butler
 Robert Caughey, Jr.
 Rodney Danco, Jr.
 Ronald Daugherty
 Rick Devin
 Henry Ehlers
 M. Suzanne Eng
 Thomas Filer
 Richard Finley
 Robert Gonda
 Don J. Jenkins
 Robert Klucsor
 Edgar Kobak
 Sara Leary-Haas
 Richard Linzer
 Nancy McCaffrey
 Sue Nicklin
 Stephen Paulovitch
 Louis Roberts
 Carl Rubin
 Larry Shanley
 Harry Smith
 Olivetta Smith
 Paul Stanek, Jr.
 John Stehle
 Steve Stein

1971

Dennis Beran
 John Brush
 Madell Dobrushin
 Bohdan Durkacz
 James Fischl
 Alice Furman
 Gary Gelfo
 Joseph R. Greco
 Martha Groll
 Rick Haskins
 Harry Heh, Jr.
 Daniel Hubert
 Dolores Huwar
 Mary Josefoski

HONOR ROLL OF BENEFACTORS ▶

Donald March
Donna Mega
Ruth Novak
Paul O'Neill
Daniel Pie
Wayne Roth
Anthony Russo
Dr. Marcia Schachner
Lanny Seed
Francis Sehn
Frank Stickle, Jr.
Ronald Telesko
Katherine Vidakovich
Lynnwood Will

1972

Dennis Cestra
Donald Colaizzi
Eleazer Comstock, Jr.
Wayne Cook
Claudia DiNardo
Ronald Etzel
Kenneth Fisher
Susen Friday
Barry Heasley
Patricia Illig
Dennis Iurlano
Linda Conn Kistler
Dennis Klimo
Robert Kulpa
Robert Lukas
Daniel McKenna
Thomas Mesler
Joseph Ogradnik
John Panza
John Petrisko
Martha Rhone
Gregory Rice
Jeffrey Rozran
Michael Schoss
Angelo Sciulli Jr.
Carol Ann Spendiff
J. Michael Stauffer
Ray Wilde
John Will
Daniel Willoughby

1973

Martin Barkin
Robert Begg
Jon Boscia
Nancy Bromall
William Flaherty
Melvin Gornic
Terry Hagenbuch
Richard Kalos
Richard Kowiatek
Ronald Mangan
Rochelle Packard
Russell Pixley
Donald Poremski
Wilson Saul
Carol Savage
Sandra Schillinger
Michael Scudder
Charlotte Stabile
Michael Taylor
Lois Thomson
Mary Thorpe
Joseph Walker, III
William Welch
James Zumbo

1974

Paul Bechtold
R. Gary Brown
John Busko
Betty Fragoso
Robert Goetz
Richard Gubanich
Thomas Kayser
Stephen Kielnar
Lloyd Klein
John Krajnak
Marlene Marcus
Dean McCorkle
Zygmunt Paclawski
Richard Pegher
William Pitt
Janis Purins
William Sargent
Rosanne Saunders

James Schnare
Susan Kubik Scott
Leslie Shar
Patrick Shingleton
Eugene Szestak

1975

Don Bialon
Richard Clark
Helen Fallon
Janet Ference-Gipp
Jack Forman
Irene Gramza
Garnet Hoffman
Steven Lay
Linda Leong
William Ligetti, Jr.
Joseph Malloreay
John Milko
Douglas Ormay
Dr. Judith Rowlands
Dennis Sabolcik
Deborah Stranger
Joseph Zmijowski

1976

Dennis Brong
Kathleen Cook
Joseph Funaro
Kishore Gopaul
Shealagh Gopaul
William Heavner
Daria Hemmings
Edna Lyle*
Paul Murphy
Charles Neidig
Diana Neidig
Rita Parlato
Maryann Pauline
Lovell Thornton
Ora Thornton

1977

Allan Boggs
William Cole
Amy Cotter
Helen Early
Maria Frantz
Rose Friday
Carmen Pellegrino
Eugene Petcovic
James Russell

1978

Robert Boscia
Joseph Carson
Anthony Dyda, Jr., Ph.D.
Pamela Golden-Loder
Mary Grogan
Sharon Hart-Rhodes
Paula Herman
Mary Kempffer
Marianne King
Christine McClure
John McCoy, Jr.
Michael McGovern
Teddy Nisenbaum
James Rushin

1979

Michael Bewak
Michael Bondi
Donna Boyer
Carmen Butler
Juanita Carter
Jeffrey Cohen
Charles Collins
Pasquale DiDomenico
David Duncan
Vincent Ferri
Casey Gnage
Edward Haberle
Robert Napkori
Kim Payne
Bernard Smith
Maryjane Sunder
Robert Tarpey
Raymond Tedford
Dennis Trozzo

1980

Janet Evans
Randall Gratchick
Cheryl McDevitt (Druga) Ford
Jimmy Miller
Randy Skubek
Eric Slifkin
Susan Slifkin
Ann Smith
Philip Smith
Brian Urso
John Visnick

1981

John Becker
Nancy Chicchi
Michael DeCourcy
Robert Geeting
Joseph Gribbin, Jr.
Maureen Kedzuf
Ellen Linebaugh
Michael Listorti
Jon McCarter
James McKeen
Eileen Reynolds
W. Gregory Schmid, III
Eileen Seeley
Bertha Williams-Northington

1982

Beth Anderson
James Butler
Joseph Clark
Debra Konieczka
David Godlewski
John Goodnight
Beth Hickey
Stephen Kline
Beth Marcello
Barbara Martin
John Mikach
Donald Minner, Jr.
Eric Nickeson
Dr. Rosanna Perotti-Bouzaidi
Robert Pompeani
Amy Saunders
Mary Anne Willmore

1983

Lauren Alt
Nanci Barone
David Brady
Cynthia Crass
James Dohner
William Fogle
Dan Kerns
Marita Mathews
Patricia Matysek
Reverend Jean McLean
Dr. Stuart McLean
Frank Orban
Christine Peters
Theresa Poppell
Thomas Sikora
Sharon Sweeney
Todd Tomasic
Janet Zegar

1984

Francine Dinneen Abraham
Joseph Amicucci
Tony Banks
David Breakey
Beth Wilhelm Brody
Stanley Capper
Joseph DeCarlo
Thomas Entz
Mary Ferrance
Amy George
Jacquelyn Gray
Andrew Helgeson
Renee Illes
Robert Kirschner
Virginia McKeen
Eunice Nasri
Stephen Pavlecka
David Peart
Susan Piccirilli
Patricia Preisinger
David Prevost
Linda Riggs
Patricia Ryan
Laurence Schuler
Michelle Simpson
Richard Sofelkanik
Barbara Steinberg
Justin Supon
Lee Veri

HONOR ROLL OF BENEFACTORS ▶

Mary Vesely Andrea J. Wachter Lori Wirth	1988	1990	Lori Woodbury Stuart M. Zolot	Carol Monticue Shelley Vybiral Ronald Wadowsky Michelle Wilden	2001
1985	Larry Ammon Donald Anderson Lynette Briden Doreen Cappozalo-Cugno David Croyle Benita Duckett Leah Echard Stephanie Glazar David Hall Carolyn Hart Joan Hoffman Gerard Ingold Thomas Losket Richard Luksik Norman Marts Lisa McIntyre James Orfanopoulos, Esq. Joseph Pinchot Marybeth Rosendale Wendy Spratt Karen Tysarczyk Krumholz David Wagner Cheryl Wilk Catherine Yakemovic Georgia Zeedick	Randy Ball Robert Buncher Teresa Commisso Christopher Holt Maribeth Lucci, Ph.D. Catherine Mann James Maravich Patrick Riley Ann Marie Ryan Marie Stadulis Karen Stauffer	1993	1997	Daniel Dionne, PE Paul Heckman Thomas Laton Jeffrey Moran Gary Smith
Dorothy Conway Karen Ervin Margaretta Hahn Joseph Honeychuck Natalie Kammeraad Jeanne Kingsland Dr. Darlene Marnich Nancy Milinski Drew Napolitan Paul Schwartz Kathleen Stauffer Richard Wallace Robin Walsh Robert Welch, III	1986	1991	1994	Helen Adams Kelly Arenth-Stakeley Jeananne Brandsberg Jeanne Dutel Arleen German Catherine Schmid Wendy Setterberg Yang Shi Tracy Slater Kerry Swick-Metelsky	2002
Mary Jane Alexander Jeannine Burdsall Audie Lloyd Archish Maharaja Diane McLean Roy Munshower Rosemary Peta-Eizenhafer Jeffrey Sherman Sherry Snyder Edward Winkfield, Sr.	1989	1992	1995	1998	Gregory Caruso Francis Ferragonio, Jr. Ralph Franco Dena James Sandra Kizina Jacquelyn Meyer Besnik Miftari Janette Pekar Gary Sawicki J. Len Sperl Susan Stowe Margaret Wimmer Philip Winters
Anna Antolick James Crowley Dino DiBernardo Patricia Grindel Nadine Hlad David Klima Michelle Merlo Christine Nelson Robert Presutti	Julianne Abouzaid Philip Cleaver Bradley Duda Jack Edwards, Jr Stephen Ferris Donald Fletcher William Gross Joseph Guzzo Maria Guzzo Terry Kirsch Josiah Osibodu Alice Saxon Alice Slagle Roi Tamkin Jenny Valente	Sandra Barancyk Gary Condon Theresa Gallagher Raymond Gambino Chiara Griffin Gregory Joyce Karyn Kwiatkowski Richard Maharg Robert McLay James Piroli, II Charles Schrockman Carol Stein Francis Tiboni, Jr David Wintermute Rick Wirth	James Alexander Robert Caracci Wilmer Fox, III Semele George Thomas Hopper Stephen Lazur Cheryl Mann Thomas Maus Ronald Mikolajczyk Mary Clark Scott Kimberly Steudler Diane Sunderlin Carl Zibritosky	Adam Bernstein Karen McCue Danielle Pavlik Joann Salerno Barbara Waxenfelter	2003
			1996	1999	Calvin Anderson Laura Broome John Chergi Warren Depietress John Frydrych Martin Paonessa* Judith Samuels Corrine Satriano Stephanie Walston Beverly Weber
			Richard Bishop Randolph Bowers Paula Cox Joyce Fico Janet Gray David Kirshner Kiesha Lalama Joann Seifried Michael Shriane	Brian Belitskus Kristen Binnie Dr. Cathy Cameron Jeffrey Long Bryan McDermott Susan Penney Sharon Pipilo Rick Richards James Stoner Maria Villiotti Ralph Villiotti Jeffrey Woodard	2004
			Suzanne Barth David Boguszewski Edward Brown Linda Guercio Wendy Follansbee Homerosky James Knowlson Glenn McCann	Deborah Bateman Nadine Bognar, H Suzanne Champion Paula Dworek Jane Falkowski Jennifer Mroczkowski Toni Pucci Michael Tysarczyk Martha Williams	Michael Arnold Susan Bliss* Amanda Chase Nicholas Colasante Thomas Fillipone Chris Fording Gregory Graeff Thomas Hamm Joanne Lucarelli Matthew Maxwell Christopher Rolinson Scott Unger Jessica Wolfe

HONOR ROLL OF BENEFACTORS ▶

2005

Zlata Brawdy
Patricia Catania
Barbra Dillon
Thomas Foster
Abbey Helbling
Jay Mathia
John Scarpino
Petroula Zoll

2006

Robert Bagwell
Cindy Barnett
Mollie Cecere
R. Scott Deutsch
Joshua Howell
Jean Pierre Nsanzabera
Lisa Patterson
Thomas Phillips
Alison Trumbull
Misty Williams
Kimberley Wright

2007

Aaron Bennett
Jacqueline Gray
Susan Linzer
Heather Lubay
Jordan Nofziger
Christopher Rosage
Dena Valenza

2008

Kellybeth Clawson
William Elmes
Johnna Maryak
Jason Palmer
Rae Patton
Masheka Robertson
Frank Skrip
Bradley Soroka
Kristin Thomas

2009

Jarrett Bittner
Dalton Good
Sharon Goodwin
Brenna Jones
Mark Kamyk
Kristin Shivers
Anthony Waters

2010

Jeffrey Besong
Christopher Hill
Deanna Mondello
James Saxon

2011

Elvir Muslimovic
Derek Peters
Michael Powell

CORPORATIONS FOUNDATIONS ORGANIZATIONS

Abbott Laboratories Fund
AHRCO
Alcoa Foundation
Allegheny Land Trust
Alpern Rosenthal
Ann Smith Communications
Aramark Educational Services Inc.
ASSET Incorporated
Bank of America Foundation
Barnes and Noble College
Bookstore Inc.
Berks County Intermediate Unit
BNY Mellon
Bognar & Company
Boscia Family Foundation
BP Fabric of America Fund
Buchanan Ingersoll & Rooney P. C.
Burt Hill Kosar Rittelmann
Associates Inc.
CA, Inc.

Carol and Joe Massaro Family Fund
Chubb & Son
CI Manufacturing LLC
CJL Engineering
Cohen & Grigsby PC
Continental Real Estate Companies
Corning Incorporated Foundation
Dell Direct Giving Campaign
DLA + Architecture and
Interior Design
Douglas M. Anderson, LLC
Duncan Insurance Group Inc.
Eat'n Park Restaurant
Eden Hall Foundation
Exelon Corporation
Federal Home Loan Bank of Pittsburgh
Federated Investors Inc.
Feldstein Grinberg Stein & McKee
First National Bank of Pennsylvania
First Niagara Bank
First Niagara Bank Foundation
Glaxo SmithKline
Greco Gas Inc.
Harris Foundation
Henderson Brothers
Herbein & Company
Highmark BlueCross BlueShield
Hillman Foundation
Home Depot Foundation
Howard Hanna Co.
Howard Hanna Foundation
ISS Facility Services
J.P. Morgan Chase Foundation
KDC Living Trust
Langholz Wilson & Associates
Lanxess Corporation
Littler Mendelson
Live Nation
Losket & Associates, LLC
Lyny Briden Designs
Maher Duessel
Main Street Capital Holdings LLC
MARC USA Inc.
Markovitz Dugan & Associates LLP
MARSH
Massaro Corporation
McKamish, Inc.

MEDRAD
Merck Partnership for Giving
Michael Baker Corporation Foundation
Millcraft Industries Inc.
Montgomery County Intermediate Unit
Mt. Lebanon Office Equipment Co.
Mutual of America
Negro Educational Emergency Drive
Norfolk Southern Charitable
Match Trust
Osher Lifelong Learning Institute at
Carnegie Mellon University
Oxford Development Company
Pennsylvania Department of
Transportation
Pennsylvania Trane Inc.
PepsiCo Foundation
Pittsburgh Board of Education
Pittsburgh Child Guidance Foundation
Pittsburgh Penguins Hockey Club
PNC Bank NA
PNC Foundation
Precision Endodontics
Prime Gourmet Inc.
Private Wealth Advisors Inc.
R & V Associates
R.J. Gratchick Claims
Redevelopment Authority of
Allegheny County
Richard King Mellon Foundation
Richard P. Simmons Family
Charitable Trust
Russell Charitable Foundation
Schneider Downs & Co. Inc.
Smith Brothers Agency, LP
Southern Company Services
Educational Matching Gift Program
State Farm Companies Foundation
Sun Life Financial
Tejan Chiropractic, Inc.
The Audrey Hillman Fisher Foundation
The Ayco Charitable Foundation
The Buhl Foundation
The Carol V. Savage Fund
The Heinz Endowments
The Hillman Company
The Pittsburgh Foundation
The Procter & Gamble Fund
The Tomayko Group LLC
Timms Family Foundation
Tribune Review Charities
Tucker Arensberg P.C.

Turner Construction Company
United Jewish Federation Foundation
United States Steel Corporation
University of Pittsburgh
Medical Center
Vanguard Matching Gift Program
Verizon Foundation
Walker Communications
Wedco Inc.
Wells Fargo Foundation
Williams Coulson, LLC
WTW Architects Inc.
YWCA of Greater Pittsburgh
Zimmer Kunz P.C.

FACULTY AND STAFF

Misty Abraham
Dr. Robert Alexander
Ronald Allan-Lindblom
Trudy Avery, J.D.
Kathryn Ballas
Deborah Bateman
Paige Beal
Douglas Bentz
Jeffrey Besong
Jarrett Bittner
Robert Boscia
Patricia Boykin
Jeremy Braverman
Edward Brown
Elmer Burger, II
Mr. William Cameron and
Dr. Cathy Cameron
Nina Campbell
Guy Catania
Mollie Cecere
Alan Chamberlain
Dr. Christal Chaney
Roger Chipman
Barbara Cinpinski, J.D.
Cheryl Clark
Megan Colt
Nancy Commella
Emily Conrad
Andrew Conte
Heather Cook
Sandra Cronin
Dr. Joseph Cupples
Charlene Cusick
Mark Deer
R. Scott Deutsch

Marcia Druga
Tatyana Dumova
William Elmes
Elizabeth Evans
Janet Evans
David Fabilli
Helen Fallon
Judy Faranda
Jennifer Fedele
Mr. and Mrs. Philip Feinert
Debby and Nate Firestone
Dr. Robert Fowler
Mariann and Dr. Stan Geyer
Stephanie Glazar
Dalton Good
Gregory Graeff
Janet Gray
Joan Grejda
Dr. Richard Gutkind
Peter Halapatz
James Hardt
Rick Haskins
Richard Hawkins
Paul and Colleen Hennigan
Jane Howell
Dr. Timothy Hudson
Ron Hutson
Kim Hyde
Gerard Ingold
Fredrick Johnson
Kristene Julian
Eleanor Kane
Jay Kirk
Rochelle Klein
Janice Klembus
Samuel Kosanovich
John Krajnak
Dr. Dimitris Kraniou
Jason Kukol
Kiesha Lalama
Judith Leifer-Bentz
Danielle Leith
Garfield Lemonious
Dr. Robert Lewis
Kellen Lieb
Richard Linzer
Michael and Lisa Long
Heather Lubay
Kyle MacDonald
Michelle Macek
Archish Maharaja
Dr. Diane Maldonado

HONOR ROLL ☉ BENEFACTORS ▶

Bridget Mancosh
 Dr. Darlene Marnich
 Mark Marnich
 Terra McBride
 Nicole McClain
 Dr. Karen McIntyre
 Kimberly Merville
 David Metinko
 Kenneth Milchick
 Joell Minford
 Ken Mori
 Katherine Munsch
 Elvir Muslimovic
 Jordan Nofziger
 Robert O'Gara
 Susan Orr
 Dr. and Mrs. Emmett Panzella
 Marybeth Pastore
 Donald Pastorius
 Lisa Patterson
 Danielle Pavlik
 Keith Paylo
 Janette Pekar
 Dr. Charles and Ruth Perkins
 Thomas Phillips
 Michael Powell
 Alex Rachubinski
 Richard Rauh
 Mary Reis
 Lynn Ribar
 John Rice
 Clayton Rios
 Dr. Brent Robbins
 Diane Robertson
 Colleen Roell
 Gregory Rogers, J.D.
 Christopher Rolinson
 Marybeth Rosendale
 James Saxon
 Margaret Schafer
 Stephen Shanahan
 Jack Shrum
 Heidi Smith
 Mary Ellen Solomon
 Kelly Staley
 Heather Starr Fiedler, Ph.D.
 Kristin Steele

Dr. Lorelei Stein
 Susan Stowe
 James Sutton
 Daniel Swalga
 David Syskowski
 Shirley Tannenbaum
 Ronald Tassone
 James Thomas
 Scott Unger
 Cheryl Valyo
 Maria Villiotti
 David Vinski
 Andrea J. Wachter
 Edward C. Wachter, Jr.
 Robin Walsh
 Charles Watkins
 Beverly Weber
 Jodi Welch
 Dr. Portia Weston
 Martha Williams
 Misty Williams
 Trudy Williams
 Dr. Timothy Wilson
 Philip Winters
 Christine Zapinski
 Tom Zytka

PARENTS AND FRIENDS

Diane Abraham
 Douglas Allan
 Anne Andrade
 Donna Angle
 Robert Bailey
 Joseph Balcik
 Todd Barats, Sr.
 Mitchell Bassman
 David Beazel
 David Bechtol
 Carole Belhumeur
 Richard Bloss
 Ed Bogнар
 Nadine Bogнар
 Candy Bohlinger
 Amy Bower
 June Bowers
 Susan Boyle

Kim Boyles
 Joseph Brandau
 Lona Brandt
 Matthew Breneman
 Leslie Brocket
 Ken Brody
 Kevin Brown
 Mark Brown
 Dan Browne
 Louanne Brunenmeister
 Theresa Bruno
 Joe Burgunder
 Paul Burich
 Rosalba Cacucciolo
 Susan Calhoun
 Roberta Caplan
 Felix Cardella, III
 Ron Carlson
 Juanita Carter
 Cindy Cash
 Barbara Castanzo
 Pamela Caughey
 Matthew Cesario
 Jeffery Checchio
 Tracey Clayton
 Neil Como
 Stephanie Correll
 Terrence Cotter
 John Coyne
 Gordon Cribbs
 Viola Cunningham
 Jack Curran, Jr.
 Randy Curtis
 Anthony D'Alfonso, Sr.
 Jack D'Amico
 Samantha Darroch
 Myra Davidson
 G. John DeCoursey
 Elizabeth Dedrick
 Jeri DeLattre
 Stephen DeMaria
 Timothy Desmond
 Michael Dever
 Richard DeYoung
 Jasa Dickson
 Louis DiNardo
 Lawrence Dirisio

Michael Donahoe
 James Donohue
 Kevin Downey
 Linda Eagle
 Deborah Englert
 Linda Esposto
 Timothy Fearby
 Zenaida Fernandez
 Carol Finley
 Richard Fisher
 Karen Flasch
 Charles Foley
 Matthew Franc
 Philip Frank
 Susana Franzen
 Lois Freeland
 Carla Frost
 Susan Gaisbacher
 Charles Gallo
 The Honorable and
 Mrs. Robert C. Gallo
 Ken Gargaro
 Randy Gargiulo
 Cheryl Geoghegan
 Olga Giglio
 Richard Gilpin
 Patricia Gladowski
 Frances Gleason
 Jayne Glider
 Harry Goern
 Thomas Grealish
 Mark Gregory
 Robert Grigg, Jr.
 Dr. and Mrs. Charles R. Grubb
 Lawrence Gurrera
 Judson Hall, Jr.
 Joanne Hallock
 Misty Hannah
 Casey Harper
 Robina Harris
 Marie Haug
 Roman Hawrylyschyn
 Lori Hayes
 Andrew Hays
 James Hepburn
 Steve Hess
 Nadine Hlad
 Sharon Hollows
 Maureen Honeychuck
 Deborah Hood
 Kenneth Houser
 Terrilee Hutter

Sherri Ives
 Don and Marilyn Jenkins
 Ila Johndrow
 Bernard Johnson
 Erik Johnson
 Gail Jordan
 Remy Jurenas
 Nicholas Kabala
 Donna Kane
 Tasso Katselas
 Liese Kauffman
 Nicholas Kerber
 David Kleer
 Troy Knott
 Michael Koenig
 Blaine Koontz
 Susan Kowalchik
 Dr. Elliott Kramer
 John Krolikowski
 Teresa Kucsan
 Francine Kuzma
 Phil Laurash
 Paul Laverty
 Rick Leach
 John Learish
 Deborah Leasure
 Argie Leech
 John Levenson
 David Lewis
 Elsa Limbach
 Thomas Litman
 Terry Litzler
 Linda Lombardo
 Richard Longo, Jr.
 Mary Ann Lowe
 Clifford Luebbert
 Dr. Dennis Lynch
 Diana Mack
 Rosemarie Mahmood
 George Malenock
 Patricia Manahan
 Eric Mann
 Sandra D. Marro and Ronald J. Marro
 Jeffrey Martin
 Teresa Martin-Minnich
 Joseph Massaro
 Joseph Massaro, III.
 Steven Massaro
 Michael Mazza
 Garland McAdoo, Jr.
 Michael McAleer
 Rebecca McAlindon

Pamela McCracken
 Marcia McDermott
 Cheryl McDevitt (Druaga) Ford
 Muriel McDonough
 Gloria McElroy
 James McKain
 Irene McMorland
 Nancy McMullen
 Janice Meade
 Richard Meahl
 Rose and Robert Melchiorre
 Jim Mercer
 Becky Meyer
 Steve Mikolay
 Carl Milano
 Michele Miller
 Maria Moio
 JoAnn Moller
 William Molloy
 Deborah Moore
 Renee Morris
 Kurt Morrison
 Gary Moschetta
 Denise Mosco
 Joe Ann Murphy
 Barry Nelson
 William Nemeth
 Robert Neudecker
 Mark and Elizabeth Newkirk
 William Newson
 Jawdat Nikoula
 Kay Norris
 Christine Norton
 Annette O'Donnell
 David O'Donnell
 Jean O'Donnell
 James Ogden, II
 Kurt Olson
 Rebecca Olson
 Kathy Pape
 Carolyn Pardee
 Demetrios Patrinos
 David Peart
 Joyce Perri
 David Peters
 Chris Peterson
 Mark Phillis
 Laurie Plocki
 Timothy Polka, Sr.
 Richard Poploski
 Edward Poropatic
 Barbara Power

HONOR ROLL BENEFACTORS

Stephen and Mary Radack
 Anthony Rakoczy
 Gretchen Rasp
 Cynthia Rauton
 Harry Reazor
 Jan Receski
 Craig Rechichar
 Naomi Reed
 Cindi Reedy
 Paul Reinert
 Brian Riegle
 Margaret Rifkind
 Christine Robertson
 Gwen Robosson
 Michelle Rock
 Ron Rodriguez
 Sally Rogalsky
 Michael Rooney
 Donald Ruggery, Jr.
 Kevin Rumski
 Stephanie Russo
 Johanna Samuels
 Joseph Scarpo
 Karen Scheiner
 Eliot Schwartz
 Dee Sheing
 Michele Shivers
 Kurt Shorts
 Jack Shrum
 Rebecca Shrum
 Nancy Skultety
 Edmund Smith
 Donna Sommer
 Cheryl Soriano
 Mr. and Mrs. Walter C. Sororka
 Marilyn Standley
 Colin Starks
 Cindy Streng
 Pamela Stroud
 Joe Stuligross
 Thomas Sudzina
 John Sylvester
 James Szalla
 Janeane Tabaka
 Donna Tavoletti
 Wendy Taylor
 Annemarie Tejan

Paul Titus
 Alan Traugott
 Denny Travis
 Cathleen Tressler
 Robert Trinkle
 Stephanie Tutka
 Anthony Velgich
 Estrella Vioria
 Michaileen Vilsack
 Ronald and Patricia Violi
 Tom and Mary Wagner
 Kathy Wappel
 Joseph Wascavage
 Rebecca Watkins
 Rosalie Watson
 Lee Weiland
 Robin Weiss
 Marjorie Wertz
 Mari Williams
 Ann Williamson
 Mary Wilson
 Boyd Wood
 Nancy Wysong
 Gilbert and Laura Yablon
 James Yard
 Elizabeth Young
 Donna Zacchero
 Samuel Zacharias
 Jillian Zacks
 Christia Zelenka

HONOR AND MEMORIAL

In memory of Patricia DeMaria
 Nathan Firestone

In memory of Mary Catherine Dykhous
 PNC Foundation
 Joe Stuligross

In memory of John Feeney
 June Bowers
 Leslie Brocket
 Frances Gleason
 Harry Goern
 Robina Harris
 Elliott Kramer

Thomas Litman
 Janice Meade
 Osher Lifelong Learning Institute at
 Carnegie Mellon University
 Demetrios Patrinos
 Gretchen Rasp
 Gwen Robosson
 Sally Rogalsky
 Edmund Smith
 Paul Titus

In memory of James Haug
 Marie Haug

In memory of Vincent LaBarbera
 Cyril Koval

In honor of Gary DeJidas
 Markovitz Dugan & Associates LLP

In honor of Katherine Henderson
 Jacqui Fiske Lazo

In honor of Paul Hennigan
 Aramark Educational Services Inc.

In honor of Patricia Liebman
 David Beazel

In honor of Nina Newkirk
 Elizabeth Newkirk

In honor of Bradley Soroka
 Walter Soroka

In honor of Steve Stein
 Katherine Henderson

SPECIAL EVENTS

James and Francine Dinneen Abraham
 AHRCO
 Alpern Rosenthal
 Aramark Educational Services Inc.
 Barnes and Noble College
 Bookstore Inc.
 David Bechtol

Jeffrey Besong
 BNY Mellon
 Nadine Bognar
 Richard W. Boyd
 E. Michael Boyle
 Matthew Breneman
 Louanne Brunenmeister
 Buchanan Ingersoll & Rooney P. C.
 Burt Hill Kosar Rittelmann
 Associates Inc.
 Felix Cardella, III
 Ron Carlson
 CJL Engineering
 Jeffrey Cohen
 Cohen & Grigsby PC
 Continental Real Estate Companies
 John Coyne
 Lynn Cummings
 Jack D'Amico
 Michael Dever
 Richard DeYoung
 DLA + Architecture and
 Interior Design
 Duncan Insurance Group Inc.
 Eat'n Park Restaurant
 Eden Hall Foundation
 Helen Fallon
 Federal Home Loan Bank of Pittsburgh
 Federated Investors Inc.
 First Niagara Bank
 Richard Fisher
 Charles Foley
 Matthew Franc
 Charles Gallo
 The Honorable and
 Mrs. Robert C. Gallo
 Ken Gargaro
 Gateway Financial
 Edward Haberle
 Andrew Hays
 Henderson Brothers
 Highmark BlueCross BlueShield
 Mr. and Mrs. C. Talbott Hiteshew
 Howard Hanna Co.
 ISS Facility Services
 Nicholas Kerber
 Michael Koenig
 John Krolkowski
 Lanxess Corporation
 Rick Leach
 Littler Mendelson
 Live Nation

Maier Duessel
 Main Street Capital Holdings LLC
 Patricia Manahan
 Eric Mann
 Massaro Corporation
 McKamish, Inc.
 MEDRAD
 Jim Mercer
 Millcraft Industries Inc.
 Cheryl and Jimmy Miller
 Mt. Lebanon Office Equip Co.
 Barry Nelson
 Robert O'Gara
 Oxford Development Company
 Lisa Patterson
 Keith Paylo
 Pennsylvania Trane Inc.
 Pittsburgh Penguins Hockey Club
 PNC Bank NA
 Robert Pompeani
 Prime Gourmet Inc.
 Private Wealth Advisors Inc.
 Dr. Charles Quillin
 Craig Rechichar
 Cindi Reedy
 Russell Charitable Foundation
 Schneider Downs & Co. Inc.
 Smith Brothers Agency, LP
 Colin Starks
 The Audrey Hillman Fisher Foundation
 The Tomayko Group LLC
 Denny Travis
 Tucker Arensberg P.C.
 Turner Construction Company
 The Thomas R. T. Kaplan Family
 Philanthropic Fund of the United
 Jewish Federation Foundation
 United States Steel Corporation
 University of Pittsburgh
 Medical Center
 Ronald and Patricia Violi
 Wedco Inc.
 Dr. George R.* and
 Mrs. Kathleen White
 Williams Coulson, LLC
 Samuel Zacharias
 Zimmer Kunz P.C.

*deceased
 H = Honorary Degree Recipient

Can't find your name?

It could be because you made your gift after our Fiscal Year ended. Gifts made after Aug. 31, 2011 will be recognized in next year's list of donors.

If you asked to remain anonymous, your name has not been printed.

Alumni with two or more degrees are listed by the class year of the first degree earned.

Every effort goes into ensuring the accuracy of this report. If we made an error or omission, please accept our apologies and notify us to ensure our records are corrected.

Please contact the Office of Development at 412-392-3999 or annualfund@pointpark.edu if you have any concerns about your listing.

Thank you!

ALUMNI CONNECTION ▶



We want to know what you think.

Regardless of when you graduated, there are “classmates” you never met. Many of your classmates lived on campus as traditional undergraduate students. Others commuted, some transferred in their sophomore year, and yet others were adult learners who worked full time completing their degrees after years of dogged determination.

Same university – different experiences.

To help us plan for the future, Point Park wants to talk to alumni about their educational experiences.

In June 2011, the Middle States Commission on Higher Education reaccredited Point Park. Even before the reaccreditation process was completed, the University began to look ahead. It initiated a process to identify the educational experiences and curricula that students graduating by 2020 should expect to receive. Formally titled the Point Park 2020: Mission Delivery Project, it has come to be known simply as Point Park 2020.

The University has initiated an extensive series of conversations to engage all members of its community – faculty, students, staff and alumni to address six fundamental questions:

1. What is the definition of an educated person?
2. What should a graduate know and be able to do?
3. What will be expected of students who graduate from the University?
4. How do we support and extend the learning of students?
5. What related experiences should students have prior to graduation?
6. What is the curriculum that will respond to these expectations?

Alumni are uniquely positioned to help answer these questions and also tell us what you value about your Point Park education. What experiences and opportunities inside and outside the classroom do you think would strengthen our educational programs?

We invite you to share your views and join in a Point Park 2020 conversation. Please visit www.pointpark.edu/AlumniConversation for more information and to let us know of your interest.

Best regards,

Rick Haskins (COM 1971)
Vice President, Development and Alumni Relations

HOOP DREAMS

The Point Park University women's basketball team had an historic season in 2011-12, one that resulted in the Pioneers reaching the NAIA Division II National Tournament for the first time. Point Park was 23-7 overall and reached the national stage by winning the American Midwest Conference Tournament. The Pioneers had a record of 12-2 in the AMC and were AMC Regular Season Co-Champions. It was the first time ever that the Pioneers made the national tournament, and they had not been to a postseason of any kind since 1998-99. The 23 wins were the most in team history, and the conference title was also a program first. The Pioneers ended the year ranked No. 23 in the nation, and they broke into the national ranks for the first time ever at No. 25 on Jan. 31.



CLASS NOTES ▶

▶ 1970s

Kirk Wilson (COM 1971), who spent six terms as mayor of Carlisle, Pa., resigned his post on Jan. 3 to become a news reporter for CBS 21 in Harrisburg. Wilson, who holds a journalism and communications degree from Point Park, said that he decided to transition from making news to reporting on it. In announcing his decision on Dec. 19, he said, “after 26 years, I’m stepping down. I am leaving the world of politics and re-entering the world of journalism.”

Andrew Clarke (A&S 1973) is the new pastor of Immaculate Conception of Mary Ukrainian Catholic Church in Northern Cambria, Pa. A Pittsburgh native who earned a bachelor's degree in philosophy at Point Park, Father Clarke previously served the church in such places as Greece, Ohio, Texas, New Mexico and elsewhere in Pennsylvania.

Ray Wilde (COM 1973) has worked for the Pennsylvania Department of Transportation in Harrisburg since 1982. He received the Star of Excellence Award in 2011, one of just 28 of PennDOT's 11,800 employees to be honored with the award. Wilde has worked with the Mifflin County Babe Ruth League (for 13-15 year-olds) since 1970. He was inducted into the first class of honorees in the Pennsylvania Babe Ruth Hall of Fame in 2000. As the League's public relations director, he has written five media guides. In addition to his work at Penn DOT, he is a part-time sports writer for the Lewistown Sentinel, covering Babe Ruth baseball.

Malcolm Woodall (A&S 1971) writes, “I have just completed a one year contract as the first director of development for Lyford Cay International School in Nassau, Bahamas. After working as director of corporate and foundation relations at Carnegie Mellon University and getting my master's degree in public management from the university's Heinz School, I was recruited to be Point

Park's first vice president for development, then went on to be associate vice chancellor for development at East Carolina University in N.C., vice president for advancement at Loyola University in New Orleans, vice president for advancement at Lewis University in Chicago and vice president for advancement at North Carolina Wesleyan College in N.C. I currently stay active in fundraising and alumni relations and marketing as a consultant based in Myrtle Beach, S.C.”

Karen Rushe (COM 1974) completed her master's degree in The Beatles, Popular Music and Society at Liverpool Hope University in Liverpool, England and returned home to Grand Junction, Colorado at the end of March. She writes, “I will be returning to Liverpool for graduation in July 2012. This has been an interesting and exciting eighteen months.”

IN MEMORIAM

Paul (P.D.) Daniels (COM 1972) died of heart failure on Dec. 26, 2011 at Excelsa Health Westmoreland Hospital in Greensburg, Pa. According to his friend **Daniel Pie** (COM 1971), Daniels was “a standout journalism and communications student and a terrific athlete who excelled in intramural competition. He was active in the Tau Theta Phi fraternity, good friend to many, and kind to all. He remained that way throughout his too-short life. Many will remember him.”

▶ 1980s

R. Brett Asher (A&S 1983) made his seventh mission trip to Africa last fall. A resident of North Carolina, who earned his bachelor's degree in computer science at Point Park, Brett writes that he “used his calling as a minister and motorcycle chaplain to do ministry in the biker communities in Africa.”

Mike DeCourcy (COM 1981) has been inducted into the United States Basketball Writers Association's Hall of Fame. “Mike is a professional and the consummate college basketball writer,” said Garry D. Howard, Sporting News' editor in chief. A resident of Cincinnati, DeCourcy has been Sporting News' lead college basketball writer for 11 years, following stints at the Pittsburgh Press (1983-93), the Memphis Commercial Appeal (1993-97) and the Cincinnati Enquirer (1997-2000). He also is an analyst on the Big Ten Network and can be heard year-round as a frequent guest on sports radio stations coast-to-coast. He and his wife **Debra** (Konieczka) **DeCourcy**, a 1982 graduate of Point Park, recently celebrated their 28th wedding anniversary.

Arlethia Perry-Johnson (COM 1989), vice president for external affairs at Kennesaw State University, was honored as one of 25 Women Making a Difference by national education magazine *Diverse: Issues in Higher Education*. Perry-Johnson served as the associate vice chancellor for media and publications and chief spokesperson for the Board of Regents of the University System of Georgia from 1995 through 2006. She initially joined Kennesaw State in October 2006 as special assistant to the president for external affairs and was named vice president for external affairs in August 2010.

DROP US A NOTE!

Visit www.pointpark.edu/classnote to share your news.

► 1990s

Heather Schmidt Bresnahan (A&S 1993) was named a Pennsylvania Super Lawyer "Rising Star" Family Law (2006 and 2011) and was recognized as one of Pittsburgh's "50 Finest" young professionals (2005). She is currently secretary of the Brehon Society of Irish Lawmakers, Western Pa. Chapter and a former committee person of Dormont Borough's 5th District and council person for Dormont Borough. Schmidt is a past council member of the Family Law Section of the Allegheny County Bar Association. Schmidt concentrates her practice in family law, including divorce, custody, prenuptial, postnuptial, and property settlement agreements, disputes regarding alimony, spousal support, child support and protection from abuse. She earned her undergraduate degree in political science at Point Park.



Bob Marcink (COM 1993) is the author of *The Working Class in American Film*, a study of how the films of the late 1960s and the 1970s helped to shape the modern working class. By exploring canonical films like *Bonnie and Clyde*, *Easy Rider*, *Rocky*, *Dirty Harry* and *The Deer Hunter*, as well as lesser-known films like *Joe*, *Medium Cool*, *Scarecrow* and *Blue Collar*, the book explores Hollywood's role in helping to define the early years of the "culture wars" through its treatment and representation of both the working class and the counterculture. By choosing to represent the working class and counterculture as binary opposites instead of as

two groups that shared many interests, Hollywood helped to provide a starting point for much of modern-day political discourse. Marcink earned his master's degree in journalism and communications at Point Park and his Ph.D. in English literature and criticism from Indiana University of Pennsylvania. He teaches English and world languages at Joliet Junior College.

Joshua Spiegel (COPA 1997) premiered his new film, *The Complex*, on March 24 at the Hollywood Theater in the Pittsburgh suburb of Dormont. The movie, which was written, directed and produced by Spiegel, was filmed entirely in Los Angeles, where he lives. View a trailer for the film here: <http://vimeo.com/23509083>. Spiegel also co-created the web series, *Headset Jockeys*.

► 2000s

Matthew C. Murphey (BUS '06, A&S '11) has been promoted to commercial manager for American Bridge International Company. He oversees the finances of the \$1.2 billion Forth Road Bridge construction on site in Edinburgh, Scotland. Once completed, the bridge will be the second longest cable stay span in the world. Murphey was hired by American Bridge Company in 1996 as international accountant for the \$55 million 25th of April Bridge Rehab project in Lisbon, Portugal. He went on to work as project accountant for the \$300 million Woodrow Wilson Bridge in Alexandria, Va. After that project, Murphey joined American Bridge Manufacturing as accounting coordinator. Murphey earned his M.B.A. in international business and his master's degree in engineering management at Point Park.

Christopher Rakow (BUS '02), an Edward Jones financial advisor in Franklin, Pa., for the past five years, was recently named a principal with the firm's holding company,

the Jones Financial Companies, LLP. He is one of only 41 individuals chosen from more than 42,000 associates across the United States and Canada to join the firm's 323 principals.



Jenn Christenson (COPA '03) accepted a position as a technical support specialist with Electronic Theatre Controls (ETC) in July 2011. ETC is an international manufacturer of entertainment and architectural lighting systems. The company produces professional lighting fixtures, lighting control consoles, dimming equipment and power distribution components.

Ricky Manning (A&S '06) performed with the Holiday POPS concert conducted by Marvin Hamlisch. Manning is a detective with the Allegheny County Sheriff's Office with 13 years of service. His first inspiration was music and although his path has taken him to a career of civil service, he continues to pursue music, when he is not pursuing fugitives, on a daily basis. A graduate of the Allegheny County Police Training Academy who earned a degree in accelerated law enforcement at Point Park, Manning is a singer, guitarist, percussionist and highland bagpiper. He "dedicated his POPS performance to the memory of fallen police officers whose families can only be with them in spirit during the holiday season."

Jessica LaDow (COM '09) is eCommerce content coordinator – team sports for Dick's Sporting Goods in Pittsburgh. She creates and manages product set-ups for the Team Sports sections of www.dickssportinggoods.com.

Joseph Scarillo (COPA '08) served as stage manager for the Theatreworks USA national touring production of *Charlotte's*

Web. The show made its first stop in Pittsburgh last January before heading to New York in February, and after that to New England and Minnesota. Scarillo told the Pittsburgh Tribune-Review that *Charlotte's Web* was one of his favorite stories when he was growing up in Bethel Park. "I remember seeing it at the Pittsburgh Playhouse when I was young," he said. Scarillo, who is based in New York City, also said "one of the nice things about having performing roots in Pittsburgh and a support base through Point Park is that it's easier to make connections in New York."



Seongho Cha (COPA '06) returned to Pittsburgh for the Feb. 15-16 performance of *Shen Yun 2012*, a theatrical Asian dance experience, at the Benedum Center. The company performs internationally and has received rave reviews. Seongho is a principal dancer with the company. Learn more about him here: <http://tinyurl.com/cn8su32>.

Kate Theisen Moody (COPA '03) is the owner and artistic director of Liberty Dance Center, LLC in Waukesha, Wis. Moody returned to her hometown of Waukesha after graduating from Point Park and spending two years as a dance teacher in Philadelphia. In 2008 she opened Liberty Dance Center, which serves children ages two to 18 as well as adults and has grown to include more than 350 dance students. Now in her fourth year of business, Moody has doubled the size of her original facility and employs three additional dance teachers.



The studio gives back to the local community through food drives, Christmas toy drives, support of Shriner's Hospitals for Children and annual performances for veterans.

Julia Krebs Patterson (COPA '05) is a mentor and teacher for the early childhood program at Imagination Stage in Bethesda, Md. She recently appeared in the original production *Mouse on the Move*, which ran Jan. 4 to Feb. 5, 2012 in the company's Christopher and Dana Reeve Studio Theatre. Aimed at small audiences of children aged one to five, the play tells the story of two adventurous mice ready to explore the world beyond their little mouse-hole. The performance was a multi-sensory experience in which children were given a small suitcase of props to help the actors tell the story. Krebs (above left) also originated the role of Sister Bear for the theater's popular early childhood piece, *Wake Up, Brother Bear!* She was a teacher/storyteller in Louisville, Ky. prior to joining Imagination Stage in 2007.

Adam Sikorski (A&S '09) is the principal at Pittsburgh Colfax K-8, part of the Pittsburgh Public School District. He earned his master of arts in educational administration at Point Park. According to Sikorski, "I began my career as a first grade teacher



and was later presented the opportunity to work as a Reading First Literacy Coach. The coaching opportunity then led to me serving as an intervention specialist within the District. It was through this role that I worked closely with the school administration and realized that I wanted to pursue a principalship certification. I was accepted into the Pittsburgh Emerging Leadership Academy and served as a principal resident for 12 months. Upon completion of the program, I was appointed as principal of Pittsburgh Colfax K-8. "Sikorski said he chose Point Park's graduate program "for its reputation. As I was considering options, I learned that there were successful former Pittsburgh Public Schools administrators on faculty at Point Park. Additionally, I knew students who...spoke with me regarding the rigor of the program and the quality of the professors."



Shana Simmons (COPA '03) will present her work-in-progress, *Relative Position*, a multi-disciplinary piece, in June in Pittsburgh. A Pittsburgh-based choreographer, Simmons founded her own dance company in 2009. Simmons is known for creating site-specific, contemporary performances that focus on audience accessibility and outreach. She has performed for local, national, and international audiences, including a performance in London. ❖

Heart of Point Park

By Melissa Williams Schofield (COM 1980)

Many alumni made a love connection during their student years at Point Park. We asked a small sample of alumni couples to share their stories.



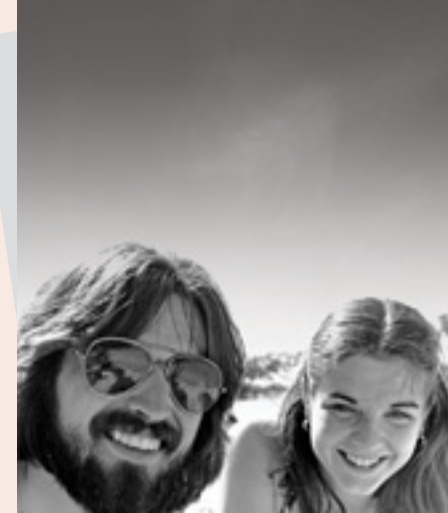
The Pioneers:
Bob and Deborah Saline

Bob and Deborah Steele Saline (both COM 1969) are convinced they are the first couple to meet and marry while Point Park students. Deborah thought her husband of nearly 44 years should date her roommate. Bob knew he wanted to marry the “young, pretty, intelligent girl” named Deborah. Bob proposed on a spring day on the steps at Point State Park. “We always say we married our best friend,” said Deborah. Bob says he graduated with more than a degree. “I found my soul mate,” he said. According to Deborah, “We have a great marriage. Bob is my life friend, my business friend, and we work beautifully together.” The couple has operated PRworks, Inc., in Camp Hill, Pa., for 11 years. Their resumes are impressive. They are active in local and national organizations. There are three Point Park degrees in the Saline household. Their son, Erik, earned a bachelor’s degree in electrical engineering technology in 1997.



Sparked on Mt. Washington:
Richard and JoAnn Andrus

JoAnn Cerilli Andrus (A&S 1969) already had a boyfriend when she went to Point Park in the mid 1960s. That is, until she met Richard Andrus (BUS 1970) at a Mount Washington party. “When I saw those pink cheeks and blue eyes, I knew he was for me,” said JoAnn. When she took him home to meet her parents at their South Greensburg home, they thought he was too good to be true. Not long after, he proposed. They’ll celebrate their 43rd wedding anniversary on June 28. Baseball brought Rich to Point Park. He is a self-employed insurance agent for Willard Lewis Co. in Ambridge. An avid golfer, he was president of the Sewickley Heights Golf Club. JoAnn, a retired Steel Valley School District teacher, said the education she received at Point Park was “unbelievable.” Her husband agrees. “I had a great experience,” he said. Residents of Bradford Woods, Pa., they have two children and two grandchildren.



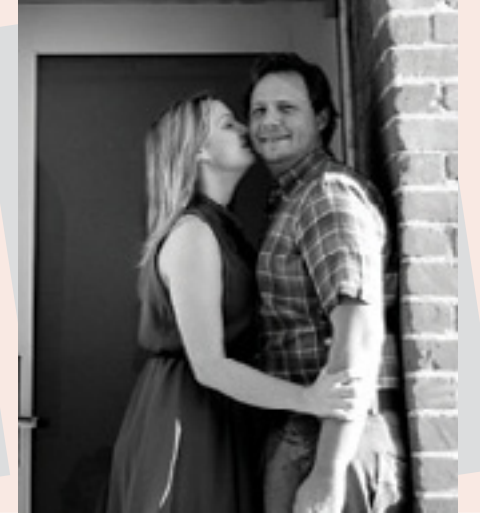
Picture of Happiness:
Alan and Mary Grogan

Alan (COM 1981) and Mary Hughes Grogan (COPA 1978) were high school and college sweethearts. “We grew up at Point Park. Even though Alan majored in photography, he was the stage director for Point Park’s American Dance Ensemble. “He knew all the dancers and everyone in my world,” said Mary. Both grew up in Alexandria, Va. “Going to Point Park solidified our relationship,” she said. The couple married July 5, 1980. Alan is a marketing consultant for SpringOak Associates, Springfield, Va. Mary taught ballet in Springfield and is director of business development for Black Box Network Services, Herndon, Va. Point Park has been a family affair for the Grogans. Mary’s sister, Peggy Hughes Polito (COM 1979), met and married her husband, the late Carmen Polito (COM 1979) while at the University. “Everything about Point Park was a wonderful experience,” the couple admits. They have two sons: Matthew and Cody.



First-Year Frenzy:
Ben Timko & Dana Lambertina-Timko

When Ben Timko (COM 1996) met Dana Lambertina-Timko (COPA 1995) during Point Park’s First-Year Frenzy on the Gateway Clipper, he knew he wanted to ask her out. Two weeks later, he had enough nerve. Timko, who was baseball team captain, worked summers in construction. He later worked for Kmart Kids Race Against Drugs, taught construction technologies for Triangle Tech and was marketing director for Bob Showers Windows. He is proprietor of 765-Deck, LLC and 768-Roof, LLC, and Avanti Holdings in Clearfield, Pa. Lambertina-Timko graduated valedictorian from the Pittsburgh Beauty Academy in 1997, and later earned her manager and teacher’s degree. Ben convinced Dana to move to his hometown of Clearfield. He constructed Taffy Salon & Spa and The Dance Company, where Lambertina-Timko teaches ballet, tap and jazz. The couple was married four days after 9/11 at Dewey Beach, Del. Guests drove for days since air travel was halted. “Everyone wanted to be around family and friends,” said Lambertina-Timko. The couple has one daughter, Milano Jo, 2.



Only the Beginning:
Katie Henderson and Ben Bohrer

Katie Henderson (COPA '06) and Ben Bohrer (COPA '10) might differ on how they met at Point Park, but agree they found the love of their life. Both graduated with degrees in musical theatre. Bohrer recalls seeing his future fiance struggling to hail a cab on a cold Pittsburgh night. He intervened. On the ride home, they talked. He was smitten. “It took almost two years to catch the eye of Katie. After six years together, here we are preparing our wedding,” said Bohrer. The couple moved to Los Angeles to continue their acting careers. Bohrer works at William Morris Endeavor Entertainment in Beverly Hills. Henderson works at Mirada, Guillermo del Toro’s production/post-production studio in Marina Del Rey. Bohrer proposed on New Year’s Eve 2010. “As the ball dropped, he dropped to one knee and proposed! I replied a very happy ‘yes,’” said Henderson. The couple will marry in Santa Ynez, Calif. on June 30, 2012.

Share Your Story
Did you meet your life partner or spouse at Point Park? Write to us at thepoint@pointpark.edu and we’ll include your memories in Class Notes.



Alan and Mary Grogan cutting the cake, July 5, 1980.

Reaching High

Point Park volleyball reaches national tournament, plays on campus for the first time

by Kevin Taylor



AMC Tournament Champs
The Point Park volleyball team celebrates its American Midwest Conference Tournament Championship Nov. 8, 2011 in the Student Center Gym. Photo by Lyddia Ankrom.



Team Huddle
The Point Park volleyball team gets ready for its NAIA National Championship Opening Round match Nov. 19, 2011 at Indiana Tech in Fort Wayne, Ind. Photo center and right by Kevin Taylor.



All-American
Point Park junior outside hitter Lindsey Oberacker was NAIA All-American Honorable Mention and a CoSIDA Academic All-American First Team selection in 2011.

SPORTS ROUNDUP

▶ MEN'S SOCCER

The men's soccer team was 12-5-1, reached the AMC Tournament Finals and tied a school record for victories in a season. The Pioneers had the AMC Coach of the Year Jeroen Walstra and All-AMC first-team selections Alex Sala and Francis Tabi. Making All-AMC second team were Shane Lucas, Matt Anecchiarico and Brett Gwosden.

▶ WOMEN'S SOCCER

The women's soccer team reached the AMC Tournament for the first time with a very young roster that included 10 starters who were freshmen or sophomores. Kristina Stammer was All-AMC second team, and getting All-AMC honorable mention were Lauren Evans, Destiny James, Kari Kowalski, Louise Delaney and Megan Kuntz.

▶ MEN'S CROSS COUNTRY

Junior Dylan Grunn emerged as the top runner for a Pioneers men's cross country team that battled a lot of injuries. Grunn posted a career-best time of 27:45 at the conference meet in St. Louis. Other top runners were Andrew Rowland, Reuben Rono, Jon Rohlf, Conor Mulvaney and Chris Kennedy.

▶ WOMEN'S CROSS COUNTRY

The women's cross country team battled key injuries to its upperclassmen, but underclassmen like Keri Rouse (22:33), Katie Johnston (22:47), Christina Wisniewski (23:14) and Lindsey Palmer (23:59) stepped up to be the top performers at the conference meet. Leah Bubeck, Martine Saul, Lindsay Dill and Ashley Goodsell were seniors.

▶ MEN'S BASKETBALL

Men's basketball was 13-12 and reached the AMC Tournament in 2011-12. The Pioneers led the NAIA Division II in scoring (88.6 ppg) and rebounding (43.9 rpg). Junior point guard T.J. Heatherington (24.5 ppg) led the nation in scoring and has 1,167 career points. Senior forward Devon Alexander (13.7 ppg) ended up with 1,002 career points.

▶ WOMEN'S BASKETBALL

Women's basketball won the AMC Tournament and for the first time went to the NAIA Division II National Tournament in Sioux City, Iowa. Tony Grenek was AMC Coach of the Year, and April Austin and Joncelyn Peterkin were All-AMC first team. See page 38 to learn more.

It was a season of "firsts" for the Point Park University volleyball team in the fall of 2011.

The Pioneers made it to the NAIA national tournament for the first time in program history, and it was the first time that a Point Park women's sport made it to nationals. Also, the Pioneers played the first-ever varsity athletic contest at the on-campus Student Center Gym, their new home court.

The Pioneers had an overall record of 36-6 to rank first in total wins in school history, and they won their first conference title when they took home the American Midwest Conference Tournament championship.

The volleyball team hopes these "firsts" are just a sign of things to come. For several years now, the program has achieved success on the conference level with AMC playoff appearances in five of the last six years. But 2011 was the first time the Pioneers broke through to the national stage.

"The toughest thing to do is build a tradition," said volleyball head coach Mike Bruno, who has been at Point Park for seven years. "It was a great experience for our ladies to break through to the national tournament, and they got a taste of what it is like to get there."

"I credit the ladies we have now who have worked hard to lay the foundation of what

we hope is a long-standing tradition." The Pioneers had some high-end talent with AVCA-NAIA All-Northeast Region performers Lindsey Oberacker (OH), Brittany Lhota (RS) and Tayler Pugliese (S). Oberacker was NAIA Honorable Mention All-American and the AMC Player of the Year. She was joined on the All-AMC First Team by Lhota, AMC Setter of the Year Pugliese, and middle hitter Nicole Wurstle.

Point Park also had veteran talent on defense with Amanda Ardinger, Margaret Gillooly and Alyssa Hall holding down the back row for the third year in a row. The Pioneers will welcome their whole team back in 2012 with Rachel Stedina and Cassandra Maxwell the only seniors lost.

By making it to the NAIA tournament, the Pioneers were among the final 36 teams in the national-championship field. They were never able to crack the Top 25 national rankings during the regular season, but that's something they can add to their to-do list next year. In any case, Point Park took steps toward making a name for itself in NAIA volleyball.

"We were fortunate to be among the final 36 teams in the country, and we hope to build on that in the future," said Bruno, the 2011 AVCA Northeast Region Coach of the Year. "We aspire to be among the nationally ranked programs in the NAIA."

Point Park earned its NAIA national bid by winning the AMC Tournament, followed by a victory over Holy Names (Calif.) in an Unaffiliated Group Championship Match at the Student Center Gym.

Fan support among students, parents and friends was at an all-time high for the AMC Tournament and the Unaffiliated Match. The Student Center Gym opened in the fall of 2010 and became available for home volleyball matches in the fall of 2011.

"It was wonderful for our ladies to be able to compete at an on-campus facility in front of the campus community. That is something that had never happened before because we didn't have our own gym." ♦

Kevin Taylor is director of athletic communications at Point Park.



For more Pioneer news, visit www.pointpark.edu/athletics.

THE POINT

Point Park University
201 Wood Street
Pittsburgh, PA 15222

NON PROFIT
ORGANIZATION
U.S. POSTAGE
PAID
PITTSBURGH, PA
PERMIT NO. 1674


Read The Point online! Visit www.pointpark.edu/ThePoint.

Here Comes the Sun

Photo by Ian Bradshaw.



No matter what the season, the Village Park is a hub of campus life for students and the University's Downtown neighbors.

 Please recycle. Share this publication with friends and family who would like to learn more about Point Park.