

THE POINT

A Magazine for Alumni and Friends of Point Park University

SPRING 2011



Family Ties

- ▶ Pompeanis Make Point Park, Broadcasting a Tradition
- ▶ Ensuring Happy Returns Through Reverse Logistics
- ▶ Men's Soccer Moves Forward After Turnaround Season



Dear alumni and friends,

Commencement season is almost upon us, a time of celebration and transformation. Everyone is happy to say goodbye to a long and cold winter and welcome the growth and renewal brought by spring.

Many people celebrate commencement as a happy ending and significant accomplishment, and for all of our graduating students and their families, that is certainly true.

For me, however, commencement season always feels like a new beginning.

As our graduates say goodbye to college life and embark on the next phase of their lives and professions, I share great pride in their accomplishments. I also experience a renewed energy to continue working toward the ambitious initiatives and goals that we have set as a University community.

Point Park has much to celebrate, and much hard work yet to accomplish.

The University recently marked an important milestone: completion of a rigorous self-study and evaluation process to meet the accreditation requirements of the Middle States Commission of Higher Education. This intensive self-evaluation process, known as Point Park Excellence, lives on as the University's continuous improvement model after the Middle States team completes its campus visit in late March.

We have also reached the midpoint in our six-year Strategic Plan, which is focused on enhancing academic excellence, providing a quality student experience, exercising managed growth and promoting community engagement. The plan was established in 2008 after a two-year strategic planning process that involved more than 145 individuals from administration, faculty and staff, including 18 academic and eleven non-academic planning teams.

Our Strategic Plan, which embraces quality management as a model, is a tribute to the dedication of these Point Park people. Truly a bottom-up, all-inclusive effort, the resulting plan has guided this University in its transition from survival management to managing for quality.

Thanks to the hard work and dedicated commitment of the entire campus community, we are a University in the process of transformation. This is truly the spirit of Point Park.

We look forward to sharing news about our ongoing transformation with you. Thanks for keeping in touch.

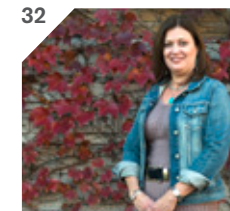
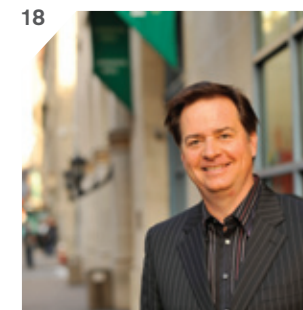
Warm regards,

Dr. Paul Hennigan
President



TABLE OF CONTENTS ▶

2 Feedback	34 Alumni Connections
2 News and Views	35 Class Notes
8 Student Center is New Campus Hub Former YMCA offers fitness equipment, gym, recreation center, meeting space and much more	40 Pioneer Athletics Point Park Men's Soccer builds on 2010 turnaround
14 Legends of the Playhouse Annual gala honors Shirley Jones and Richard E. Rauh for their leading roles in Pittsburgh Playhouse history	
16 Many Happy Returns Lori Molinari advises corporations on reducing e-waste through reverse logistics	
18 Family Ties Bob Pompeani and daughters Chelsea and Celina make Point Park, broadcasting a tradition	
20 Honor Roll of Benefactors	
32 Revitalizing Wilksburg Alumna Tracey Evans leads economic development in her hometown	



TALK TO US!
The Point wants to hear from you. Send your comments and suggestions to:

Managing Editor
Marketing and Communications
Point Park University
201 Wood Street
Pittsburgh, PA 15222

Phone: 412-392-6108
Fax: 412-392-6185
Email: thepoint@pointpark.edu



On the cover:
Alumnus Bob Pompeani and student daughters Chelsea (left) and Celina in the lobby of Lawrence Hall. Photo by Jim Judkis.

- | | | | | |
|---|---|--|---|---|
| President
Paul Hennigan, Ed.D. | Managing Director of Communications and Client Services
Nancy Commella | Director of Organizational Identity and Photography
Dalton Good | Writers
Colleen C. Derda
Camille P. Downing
Terra McBride
Cristina Rouvalis
Kevin Taylor
Christine Zapinski | Photographers
Tom Bell
Chelsey Engel
Jim Judkis
Richard Kelly
Gabrielle Mazza
Martha Rial
Christopher Rolinson |
| Vice President of External Affairs
Mariann Geyer | Managing Editor
Cheryl Valyo | Manager of Printing and Office Services
Don Pastorius | | |
| Senior Director of Marketing and Communications
Mary Ellen Solomon | Graphic Designer
Christie Martz | | | |

The Point is published by the Office of University Advancement, Point Park University, 201 Wood Street Pittsburgh, PA 15222. Every effort has been made to ensure the accuracy of published information. Please visit our web site at www.pointpark.edu for current information regarding University programs, departments, alumni activities and events. Point Park University educates students in a diverse environment and prepares graduates to apply knowledge to achieve their goals, advance their professions and serve their communities. Point Park University does not discriminate on the basis of race, color, national origin, sex, age, religion, ancestry, disability, veteran status, sexual orientation, marital status, caregiver status, or familial status, in the administration of any of its educational programs, activities, or with respect to employment or admission to the University's educational programs and activities. This policy is in accord with local, state and federal laws, including Title VI of the Civil Rights Act of 1964, Title VII of the Civil Rights Act of 1964, Title IX of the Education amendments of 1972, Section 504 of the Rehabilitation Act of 1973, the Americans with Disabilities Act, Age Discrimination Act of 1975, and the Pittsburgh Human Relations Act. Inquiries regarding these regulations, policies, or complaints of discrimination should be referred to the Human Resources Officer, 2nd floor, Thayer Hall, telephone number 412-392-3952. Inquiries regarding Title IX and the Title IX regulations can also be referred to the Human Resources Officer as the Title IX coordinator.

Governor Announces Investment in Urban Park

On Dec. 13, 2010, in Point Park's Lawrence Hall, outgoing Governor Edward G. Rendell announced that Pennsylvania has awarded \$84 million for 19 projects throughout Allegheny County that will provide the foundation for the creation of more than 10,000 new jobs. As one of these awardees, Point Park received a \$3.25 million Redevelopment Assistance Capital Program (RACP) grant from Gov. Rendell and the state legislature for the construction of a new park at Wood Street and Boulevard of the Allies.

Funding for the 19 projects comes from the state's Redevelopment Assistance Capital Program, which operates on a reimbursement basis as construction expenses are billed and paid on projects that have been approved by the General Assembly and signed into law by the governor.

The new corner park will improve the quality of life for students, visitors and residents of the neighborhood by replacing a surface parking lot with greenery and water features. It is a key component of the Academic Village at Point Park University.

Site preparation and construction began last fall on the



distinctive outdoor gathering spot, which will feature colorful River Birch trees, plantings and a colonnade that will wrap the sides of two University buildings: the Boulevard Apartments and 100 Wood St. The south colonnade will open into a new restaurant on the lower level of the Wood St. building, and will culminate in a striking stair tower featuring a granite fountain on the lower level. Designers for the park are the architectural firm Tasso Katselas Associates (TKA) Inc. and Klavon Design, a landscape architecture firm. Massaro Corporation is leading construction on the park.

The new plaza, which will complement the design of the revitalized streetscape along the Wood Street Corridor between Ft. Pitt Boulevard and Third Ave., is scheduled to be completed in fall 2011. To learn more about Point Park's urban green space, visit www.pointpark.edu/About/AcademicVillageInitiative/UrbanPark.

Professional Advancement

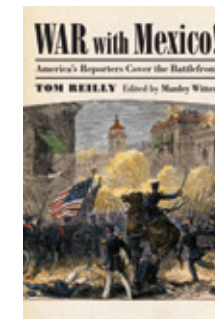
Sarah Perrier, Ph.D., assistant professor, was a featured poet on *PBS News-Hour's* Art Beat blog. The national public broadcasting's weekly poetry segment presents Perrier reading "Poem in Which I Fail to Appear" in a videotaped at the Association of Writers & Writing Programs conference in Washington, D.C. The poem is from Perrier's book *Nothing Fatal* (2010, University of Akron Press). She is also the author of the chapbook *Just One of Those Things* (2003, Kent State University Press). Perrier's poems have appeared in *The Cincinnati Review*, *Cimarron Review*, *Hotel Amerika*, the *Journal*, *Pleiades* and *Mid-American Review*. Her work has also been featured on *Verse Daily*. Perrier attended the AWP conference with assistant professor **Karen Dwyer**, who also teaches in the University's creative writing program. To hear Perrier read her poem, visit: <http://tinyurl.com/4qj3hvz>

Sam Kosanovich, women's basketball head coach at Point Park, will step down as head coach of the Pioneers at the end of the 2010-11 season. Kosanovich, who has taken the team to its most consistent success as the head coach the last five seasons, will take on his role as the University's Student Center director full time. He has served a dual-role at Point Park. In addition to coaching he served as Recreation Center director and then director of the Student Center, which opened last fall in the building that was formerly the YMCA (see page 8).

Patrick Millard, assistant professor in the School of Communication, has established a new lecture series on the photographic arts. The *Speaking Light* series features emerging and established artists. Millard's work in photography, new media and sound addresses ideas

about media, digital culture, technology and the interactions that human beings have within the synthetic environment. The lecture series brought three photographic artists to campus to speak this spring: **Nate Abramowski** on Jan. 28, **Christine Holtz** on Feb. 25 and **Heather Pinson** on March 25.

Ed Traversari, professional in residence with the sport, arts and entertainment management (SAEM) program, conceived of a *Bob Marley Live Forever* concert about five years ago and worked with the Marley family to bring the idea to fruition. The one-night-only tribute to Bob Marley, held on the 30th anniversary of his final performance, was lauded by the Pittsburgh Post-Gazette as the best concert of 2010. Many SAEM students assisted in production of the concert.



Manley Witten, adjunct professor in the School of Communication, edited *War with Mexico! America's Reporters Cover the Battlefield*, written by Tom Reilly and published by the University of Kansas Press.

The Mexican War was the first foreign war to be comprehensively reported in the American press. The book tells the history of the war through the eyes of reporters and reflects how that effort signaled the emergence of newspapers as an important force in American life.

Tatyana Dumova, Ph.D., associate professor in the School of Communication, has joined a group of assessment experts in the field of communication to develop a comprehensive guide for measuring discipline-specific outcomes of student learning. Dumova is the lead author of a chapter on online assessment resources

in *A Communication Assessment Primer* recently published by the National Communication Association, Washington, DC.

Rochelle Klein, assistant professor and coordinator of Music Education/Core Arts at the Conservatory of Performing Arts, presented highlights from her DVD *There's a Place for Us: Musical Theatre Resources in the Pittsburgh Area* at Point Park's Convocation last fall. Klein created the DVD, with the help of a faculty development grant, in conjunction with the Pennsylvania Music Educators' Association.

M. H. Sidky, Ph.D., professor in the School of Business, presented a paper on "Sovereign Debt Crisis and the Socio-Political Impacts of Austerity: The Case of Greece and the European Union" at the Northeastern Association of Business, Economics and Technology (NABET) in State College, Pa., last November. Sidky and business professors **Archish Maharaja**, Ph.D., and **Dimitris Kraniou**, Ph.D., co-authored and presented a paper on "Sustainability for Multinational Corporations through Knowledge Creation and Management." Maharaja also presented a paper on "Economics of Operating an Independent Physician Practice" with co-author **Gita Maharaja**, Ph.D., at NABET.

Tim Hudson, Ph.D., dean of the School of Communication, traveled to Belgrade, Serbia, last fall to address the faculty of Singidunum University's School of Media and Communication on the subject of "new technology in journalism education." Hudson also presented guest lectures in several classes at the University of Belgrade, the University of Novi Sad and the Belgrade Academy of Arts.

Jim Thomas, Ph.D., associate dean in the School of Arts and Sciences, began

▶ **FEEDBACK**



Point Park's first cheerleaders

cheerleader from 1961-63. We cheered for the basketball games and wore white skirts and white sweaters with a green "P" on the front. It was a very long time ago! Some of my fellow cheerleaders included Barbara Thomson, Ruth Schlosser, Linda Kuhn, Susan Pfeil, Nancy Dixon, Barbara Drugmond and Frannie Kelly. Cheering was a fun time. We may have been the first cheerleaders in Point Park history. I also recall, as far fetched as it may seem, that we cheerleaders met with Art Rooney Sr. and [were considered to] cheer for the Steelers! I would love to hear from other cheerleaders to confirm that and share other memories. As a student, I remember walking to the Civic Arena, which was newly built, for a Point Park physical

education class. I lived near campus at the Evangeline Residence on Wood Street. After graduation I used my Point Park medical/secretarial education to work for two physicians in the Clearfield, Pa., area. I have been married for 46 years and have four children and nine grandchildren. I also enjoy volunteering with two environmental groups that work to improve water quality in our local streams. Thanks for the memories! Attending Point Park in the 1960s was a great experience for me as a central Pennsylvanian."

Sincerely,

Nancy Carns Potts
A&S 1963

"Reading about the University's 50th anniversary celebration (in 2010) brought back many happy memories of my student years. I was a Point Park

a special assignment in the Office of Academic and Student Affairs beginning in the spring semester. Thomas' role includes a focus on student academic issues, the facilitation of retention efforts, work with the deans and department chairs to more fully engage adjunct faculty, oversight for the Children's School transition, and monitoring the strategic plan and budget of the office. He continues to provide support for Success Centers, First Year Initiative, and the Program for Academic Success. **Lorelei Stein**, Ph.D., assumed new responsibilities for the School of Arts and Sciences as faculty development facilitator. Stein's role is to encourage and promote faculty and student research, enhance faculty scholarship, especially scholarship of teaching, and develop other faculty development initiatives.

New M.Ed. in Special Education

Point Park's Department of Education will launch a new master's program this fall. The M.Ed. in Special Education, leading to Pennsylvania teaching certification in special education for pre-kindergarten through grade 8 or grades 7 through 12, prepares educators for the state's new special education certification that takes effect in 2013. Point Park is only one of 12 schools in the state offering new graduate and undergraduate programs leading to certification in special education for secondary education. The University is offering three introductory courses this summer for graduate students interested in getting an early start on the 30-credit program. The graduate education program is structured to fit the schedule of classroom teachers and working professionals.

Grant Supports Public Art Design Commission

Point Park has received a \$65,650 grant from The Heinz Endowments to support a design team commission for a public art project. Point Park and Riverlife have partnered to sponsor the commission, which will result in a public art installation designed to create a stronger pedestrian connection between campus and the newly constructed Mon Wharf Landing park. The entrance to the Mon Wharf is separated by urban roadways and the intersection at Wood Street and Fort Pitt Boulevard. Through the commission, an independent artist will be selected to work with the landscape architecture firm that designed the Mon Wharf Landing to invigorate the gateway with public art. The project aligns with Point Park's Academic Village initiative to cultivate

connections between campus and its Downtown neighborhood, including the waterfront.

Day of Dreams

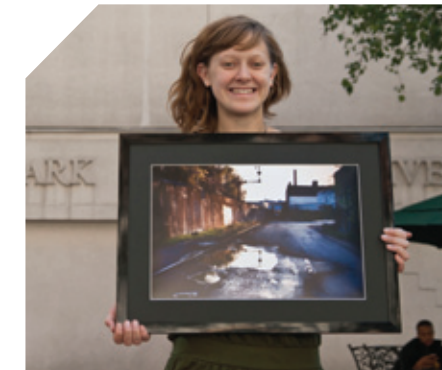
Point Park students donated their time to community service and shared their artistic creativity as part of the University's second annual "Day of Dreams" celebration to mark Martin Luther King Jr. Day on Jan. 17. Students held a book drive to benefit Allegheny County Jail inmates and their families and sold T-shirts to raise funds for Pittsburgh Promise students who attend or plan to attend Point Park. In addition, they encouraged students to create quilt squares on the theme of "My dream for you is...." The quilt was given to Martin Luther King Elementary School on Pittsburgh's North Side. In an evening program, students shared their talents with dance, poetry and video dedicated to keeping King's dream alive. The events were organized by the Honors Student Organization, Black Student Union, United Student Government and Ad Fed/PRSSA in collaboration with the Office of Academic and Student Affairs.



Day of Dreams performance

Cinema and Digital Arts Team Collaborates on Documentary

What Does Trouble Mean, Nate Smith's Revolution, a documentary about the Pittsburgh African-American labor rights



Nicole DeSantis and her winning photo

activist Nate Smith, premiered Feb. 18 on WPXI television in Pittsburgh. Cinema and Digital Arts department alumni, students and faculty held key positions in the production of the film, which profiles a pivotal figure in the national fight for civil rights. Faculty participating in post-production included **Andrew Halasz**, supervising sound editor/mixer. Students included **Noel Schermaier** and **Brittany Klesic**, both sound editors. Alumni produced the historical reenactments for the film, including **Elise LaGamba**, production designer; **Jon Joseph**, producer; and **Donny Thomas**, cinematographer. Student **James Odgen II** played the role of young Nate Smith. Post-production facilities were provided by Point Park.

Salute to The Courier

The School of Communication hosted a free public screening of the documentary *Newspaper of Record: The Pittsburgh Courier* on Jan. 25, at the GRW Theater. A panel discussion and reception, including African-American press scholars, reporters and editors, followed the screening. "The Courier played a major journalistic role not only in Pittsburgh but also in the nation," said **Steven Hallock**, director of graduate studies in School of Communication.

Photo Honored in International Exhibit

Little did **Nicole DeSantis** know when she spontaneously snapped a photo of a Pittsburgh side street that her image would one day be exhibited in 66 countries around the world. The Point Park senior and her photo were selected to represent the United States in the International Heritage Photographic Experience last December in Europe. DeSantis' photo earned her an expenses-paid trip to Strasbourg, France, where a ceremony was held to honor all of the competition's winners. The photojournalism major said it was "a great experience to be able to use something I created to travel and share with my peers internationally."

In Memoriam

Ralph Altman, who served as chair of the business and accounting department at Point Park College in the 1970s, died on Dec. 12, 2010. He was 84. He is survived by his wife of 60 years, Betty, and their eight children and 18 grandchildren. Altman served in the 63rd Infantry Division in Germany in WWII and played semi-pro baseball in the 1940s as a pitcher. He was also a practicing CPA for more than 50 years. "Our long-standing faculty members remember Ralph as their first "boss" and mentor at Point Park," said **Angela Isaac**, dean of the School of Business. "Many of us had the opportunity to reconnect with Ralph at the 50th Anniversary Celebration dinner last fall September, enjoying his great stories and enduring love for our University. He will be sorely missed by his friends at Point Park."



SUPPORTING THE JOURNEY...

The Annual Fund for Student Success

- You can make a life-changing journey possible for deserving students with your unrestricted gift to Point Park University's Annual Fund for Student Success.
- Your tax-deductible gift directly supports much-needed scholarships for new and returning students whose lives will be transformed by their Point Park education.

To donate online or for more information, visit www.pointpark.edu/annualfund or call 412-392-3999.

A Winning Business Plan

Students in Point Park's Introduction to Business course gain real-world experience with a dose of friendly competition in the School of Business' annual Business Plan Contest, founded by Professor **Elaine Luther**, D.Sc. The third annual contest, held fall semester, was no different. More than a dozen groups of students in BMGT 101 participated in developing a business plan. Five of those groups advanced to the final round of competition. The winning concept, developed by students **Caitlin Atkinson** and **Rebecca Wood**, leverages the power of social media to help Pittsburgh public transit riders, including many students, make most efficient use of the system. Their concept, called Real Time Applications, is simple. Users download the app to their smart phone. Through

this app, users can look up their bus route, view stops along that route, and get a real-time update on when buses left each stop. Users can also use the app to check in at their stops and add comments so other riders know what to expect. As part of their plan, Atkins identified the target market for promotions. Wood crunched numbers and worked out how Real Time Applications would be financed. The duo leveraged social media to gather information: they created a survey and sent it to people they knew on Facebook who fit the target demographic. They put all their information into a presentation that impressed the working professionals on the panel of judges. "It was exciting to get feedback from business leaders and to see such a positive response," Atkinson said.



Bob Pompeani

Commencement 2011 to Honor Distinguished Alumni

Point Park's upcoming 2011 commencement ceremonies will feature broadcaster **Bob Pompeani** (COM 1982) as the speaker at the main commencement ceremony at the Consol Energy Center on May 7, and business leader Gary DeJidas (BUS 1972) as the speaker at the graduate hooding ceremony on May

6. Retired business leader and Trustee Emeritus **Steven Stein** (BUS 1970) will receive an honorary degree.

Since his graduation from Point Park with a degree in journalism and mass communication nearly three decades ago, Bob Pompeani has become one of the most well-known figures in Pittsburgh sports broadcasting. Learn more about Pompeani, his long career at KDKA-TV and his family connections to Point Park on page 18.

Gary DeJidas to Address Graduate Degree Recipients

Gary M. DeJidas, P.E., who earned his bachelor's degree in mechanical engineering technology at Point Park, began his career with GAI Consultants Inc. in Pittsburgh shortly after his graduation in 1972. In 1982, he opened GAI's first office outside of western Pennsylvania in Orlando.

GAI-Orlando started with six employees but has developed a solid client base over the years, becoming the second largest of GAI's 19 offices and providing a variety of engineering services. The subsidiary, GAI Southeast Inc., grew with DeJidas as president.

In 2003, GAI consolidated all its operating companies into GAI Consultants Inc, and DeJidas was elected president and



Gary DeJidas in on-site M.B.A. classroom

POINTPARK.EDU

CEO. Under his leadership, GAI has expanded into new markets and opened offices in Ohio, Kentucky, Indiana, Virginia, New Jersey and North Carolina.

DeJidas is involved in numerous professional and community activities, including his service on the Board of Trustees of Point Park. He is also a member of the board at the Terra Insurance Co. and a member of the SunTrust Bank administrative board.

Commencement 2011 will take on special meaning for DeJidas, who will also receive his own master's of business administration (M.B.A.) degree from Point Park that day. For the past two years, DeJidas and several other GAI managers have been taking M.B.A. classes at the GAI headquarters in Homestead, Pa., through a new on-site program offered by the School of Business.

Steven Stein to Receive Honorary Degree

Steven Stein, the retired president and chief operating officer of Allied Security Inc. (now AlliedBarton) and a trustee emeritus of Point Park, will be presented with an Doctor of Humane Letters degree at Commencement 2011.

Stein, who earned his bachelor's degree in accounting in 1970, began his career as a certified public accountant at Swartz, Alpern, Rosenthal and Co. He joined the Pittsburgh-based security services firm Allied Security just two years after his graduation.

He served a variety of positions at Allied, ranging from controller to executive vice president, before being named president and chief operating officer of Allied in 1982. The company merged with Spectraguard in 2000 and later acquired



Steve Stein

Barton Protective Services and Initial Security to become AlliedBarton.

Now living in Sarasota, Fla., Stein has been involved in numerous professional and civic organizations, including the board of the Ringling School of Art and Design in Sarasota and the Pennsylvania board of advisors for Liberty Mutual Group.

He has long been dedicated to his alma mater. In addition to his service as a University trustee and a leader of the board's Development Committee, he has twice chaired capital campaigns on campus: the Campaign for the Library Center and the Campaign for Point Park University.

Stein established the Steven B. Stein Endowed Scholarship to enable deserving students to meet their goals of a Point Park education.



Planned giving means the economy does not control your charitable wishes.

Consider naming Point Park as a beneficiary in your will. You can leave a specific amount to the University or a percentage of your estate.

For a confidential consultation, contact Barb Cinpinski at 412-392-4215 or email bcinpinski@pointpark.edu

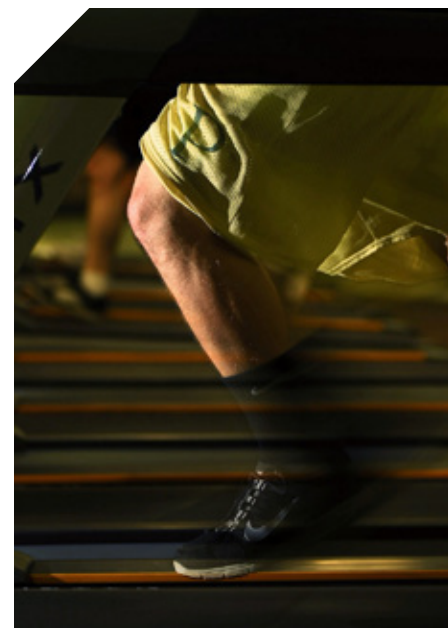
www.pointpark.edu



Student Center is New Campus Hub

Former YMCA offers fitness equipment, gym, recreation center, meeting space and more

by Nancy Commella



"I think it's amazing. I think they put a lot of work into it and it really paid off well."

That's the impression of Michael Dudley, a freshman cinema production major from Tampa, Fla., after using Point Park's new interim Student Center that opened last August. Dudley uses the gym, racquetball court and recreation center, which are part of the five renovated floors in the Boulevard of the Allies building, located next to Point Park's Boulevard Apartments.

Those five floors provide students with a serious place to exercise as well as a fun place to be with friends.

"You can just come and relax. It's a nice hangout place," remarks Isabelle Rynski, a sophomore transfer student from Chicago, studying psychology. Rynski also uses the fourth floor fitness center, which is filled with new equipment, including treadmills and elliptical and matrix machines for strength training.

The fitness center is also popular with senior Ryan Clingan, a philosophy major from Emporium, Pa., who says having access to five floors of amenities, compared to the previous one-floor recreation center in Lawrence Hall, is nice.

"It allows for a lot more students to come in and work out, a larger variety of things to do. Now, even if you just needed to kill some time between classes, you could come and spend it here rather than going elsewhere or off campus."

The University began work on the interim Student Center in 2010, after purchasing the building as part of its Academic Village Initiative.

Improvements made last summer include heating and air conditioning, plumbing, ceiling tile, lighting, carpeting, flooring and painting.

"The building was in very bad need of help," explains Keith Paylo, dean of student affairs and dean of students. For example, the gym: "We took the gym floor down to the bare wood when it was first laid" in the 25-year-old facility.

The most challenging aspect of the four-month renovations included the HVAC and plumbing, according to Elmer Burger, University architect. "It was a

constant period of discovery because as we would check things out, we discovered there were leaks or it wasn't getting air or power."

The third and sixth floors are closed, as they were not part of the \$825,000 renovation plan, which was approved by the Point Park Board of Trustees in April 2010 for the building's interim use.

The long-term plan for the building is to create a \$32 million dollar Student and Convocation Center, which will house a 1,000-seat gym, 2,000-seat convocation center, running track, bookstore, eateries and an emergency management services center.

Opposite page: Students embrace new facilities. Photos by Christopher Rolinson. This page: Photos by Gabrielle Mazza.



WHAT'S INSIDE

1st Floor – Welcome Center

Vending Machines
Training Room (for athletes/dancers)
Student Activities Office
Recreation Director's Office

2nd Floor – Recreation Center, Fitness Classrooms

Multipurpose Room (for aerobics, Zumba, yoga and salsa classes)
Pilates Room (with equipment)
Recreation Center (pool and ping-pong tables, pinball and punching machines, games, plasma screen TVs)
Men's and Women's Bathrooms/Locker Rooms
Vending Machines

4th Floor – Fitness Center

Racquetball Court
Spinning Room (with bikes)
Fitness Equipment (treadmills, elliptical and matrix machines, free weights)
Short Track
Water Fountains

5th Floor – Regulation-Size Gymnasium

In addition to use by students, the gym will be used for intramural sports and practices for the University's basketball, volleyball and soccer teams.

7th Floor

Convention Area (for large meetings)
Conference Rooms
Clubs and Organizations Room
Student Affairs Office
Commuter Affairs Office



Point Extra

For more on the Student Center, visit The Point online at www.pointpark.edu/News/ThePoint

Strategic Transformation



University marks the midpoint of six-year Strategic Plan, implements Point Park Excellence

by Cheryl Valyo

As Point Park University reaches the midpoint in its Strategic Plan, a six-year plan focused on enhancing academic excellence, providing a quality student experience, exercising managed growth and promoting community engagement, it also marked another milestone: completion of a rigorous self-study and evaluation process to meet the accreditation requirements of the Middle States Commission of Higher Education.

Adopted by the Board of Trustees in January 2008, the Strategic Plan is also the foundation for the University's annual operating plan, which focuses on targeted results, assessment measures and resource costs. The self-evaluation process known as Point Park Excellence, launched by President Paul Hennigan, Ed.D., in early 2010, will endure as the University's continuous improvement model after the Middle States team completes its campus visit in late March.

Collaborative Results

The University has undergone significant changes in its planning structure and process since Hennigan became president in 2006. The two-year process leading up to the establishment of the current Strategic Plan in 2008 was a bottom-up, all-inclusive effort that helped to create the transition from survival management to managing for quality, according to Hennigan.

The collaborative result began a period of change and renewed energy for the University, he says. "As a University, we are in the process of transformation."

More than 145 individuals from administration, faculty and staff were an integral part of the formation of the plan, which embraces quality management as a model. The plan was developed through the broad-based involvement of 18 academic and eleven non-academic planning teams.

According to Hennigan, the Strategic Plan has become "embedded" in the University culture as a result of the ongoing use of the strategic initiatives and the annual operating plan objectives. This broad involvement has been critical to the plan's success, he says.

"A great deal of time was invested in the development of this plan, with the full engagement of the Point Park community. There is a very high level of awareness of our Strategic Plan, our mission and our goals, not only on campus but also in the Pittsburgh community. We're very proud of that."

Enhancing Academic Excellence

In the world of higher education, the term "academic excellence" refers to ongoing quality improvement. "We have used the Middle States evaluation process as a guide for our strategic initiative of Academic Excellence, which has involved measuring how well we're achieving student learning outcomes and using those baseline measures to set goals," says Hennigan, who initiated Point Park Excellence, the University's continuous improvement focus that centers on assessment. "I believe, as a result of our Strategic Plan and our preparation for the Middle States accreditation visit, we are much farther along in assessing our student learning outcomes than we have ever been."

"Through Point Park Excellence, we're examining all of the characteristics of a high-quality university," says Karen McIntyre, Ph.D., senior vice president of academic and student affairs and dean of faculty. "We are evaluating where we are in our own benchmarking of that standard and which areas we can continuously improve in."

"When we refer to academic excellence, it's not only a matter of addressing traditional areas of academic experience, such as learning outcomes, the advising process, student recruitment and retention," says McIntyre. "We recently made the strategic decision to bring academic affairs and student affairs under one umbrella. These two areas really are inseparable—they represent the total experience of the student."

Quality Student Experience

In addition to the integration of academic and student affairs, strategic planning has also influenced the operation of student services at Point Park.

For example, Student Success Centers have been implemented in each of the Schools, says McIntyre. The University has also made substantial commitments to the assessment and improvement of student support services, including such areas as Instructional Technologies, the Registrar, career development, security, athletics and the campus master space plan.

Point Park has been assessing student support services through the use of the Student Satisfaction Inventory (SSI) for more than a decade. Most of the student support services units have incorporated the results of SSI in their planning, measurement and improvement activities.

The new Student Center, which opened last fall in the former YMCA building on the Boulevard of the Allies (see page 8) is highly visible example of providing a quality student experience, says McIntyre. The building, which provides fitness equipment, a recreation center, meeting space and more, has already become a campus hub. "It's a real icon," she says.

Among the many University departments and student organizations housed in the Student Center is the newly established Office of Commuter Affairs, which serves the needs of Point Park's commuter population.

The focus on quality student experience is reflected in undergraduate retention rates, which have increased significantly over the last five years, says Hennigan. For example, retention for first-time, full-time freshmen increased from 71 percent in 2008-2009 to 77 percent in 2009-2010.

Managed Growth and Community Engagement

Point Park has gone well beyond survival, says Hennigan, and a variety of growth indicators demonstrate this success. For example, enrollment has grown steadily over the past decade, from 2,312 students in fiscal 1997 to 4,077 students in the current 2010-11 academic year. The Strategic Plan has an enrollment goal of 4,300 students by 2013.

From fiscal 1997 to fiscal 2011, the operating budget grew from \$23.3 million to \$90.2 million and the endowment has grown from \$5.2 million to \$21.9 million. In the last five years, Point Park invested \$81.2 million in capital projects to upgrade academic and residential facilities, build new facilities such as the Gold LEED-certified Dance Complex, and purchase a number of properties.

The Academic Village at Point Park University is a multi-block living and learning hub that is transforming the campus and the Downtown neighborhood

it inhabits, says Hennigan. It is redefining the student experience, campus life and Point Park's connection to the Pittsburgh community.

For example, 985 resident students now live on Point Park's Downtown campus in such buildings as the University's new Boulevard Apartments, adjacent to the new Student Center.

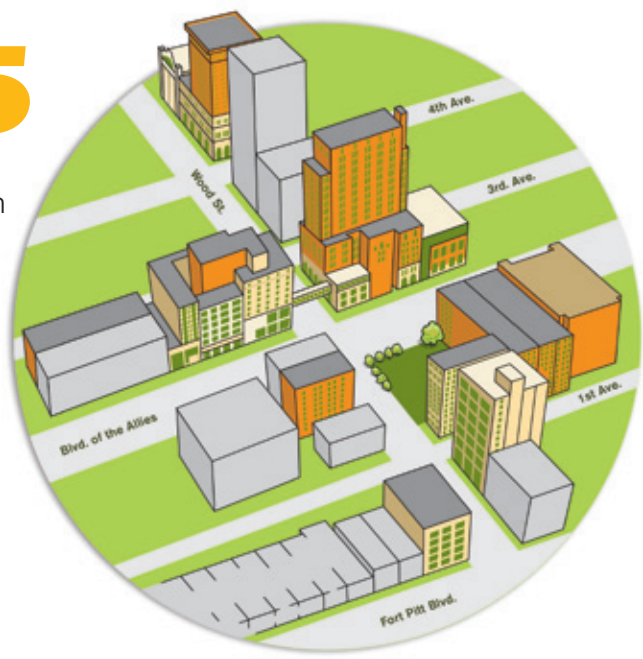
Adding to the energy is Point Park's growing network of alumni in Pittsburgh and beyond. "The University now has school-based alumni programming, for example," says Hennigan. "We were proud to welcome hundreds of our alumni to campus last year to celebrate Point Park's 50th anniversary at both spring commencement and a fall anniversary weekend celebration.

"The vitality, in our campus community, our broader alumni network and our Pittsburgh neighborhood, just keeps growing."

POINT PARK by the Numbers

15

There are 15 buildings on Point Park's Downtown Pittsburgh campus, ranging from historic Lawrence Hall (the former Keystone Athletic Club) to the new Gold LEED-certified Dance Complex on the Boulevard of the Allies. The campus had just two buildings when Point Park Junior College was founded in 1960.



235

The Conservatory of Performing Arts presents about 235 performances in an average 214-day academic year, including 18 annual main stage productions for theater and dance (and not including one-acts, fundraisers and other special performances). That's one of the most ambitious performing arts programs in the country, according to Ronald Allan-Lindblom, artistic director of the Conservatory.

985

Point Park has 985 students living on its Downtown campus during the 2010-11 academic year. Part of the University's total undergraduate and graduate enrollment of 4,077, these students live in the new Boulevard Apartments on the Boulevard of the Allies and other residence halls.



Photo by Tom Bell

113

Point Park offers 101 undergraduate degrees and 12 graduate degrees for a total of 113 degree programs in the School of Arts and Sciences, School of Business, School of Communication and the Conservatory of Performing Arts.

3,565



Point Park University's Facebook page has registered 3,565 "likes" from happy social media users. @PointParkU has 1,525 followers on Twitter.

As of Feb. 25, 2011

25

Nineteen Frontier Elm trees will soon be planted along the Wood Street Corridor and six River Birch trees will be planted in the new park at the corner of Wood Street and



the Boulevard of the Allies. The 25 new trees will enhance the neighborhood's green space while creating a more welcoming and defined urban campus.

22,976

Point Park has a population of 22,976 alumni across the United States and around the globe, all of whom earned degrees in one of the University's four schools: the School of Arts and Sciences, School of Business, School of Communication and the Conservatory of Performing Arts.



11

There are 11 varsity sports at Point Park. During the 2010-11 academic year, 178 student athletes participated in varsity sports ranging from baseball and basketball to soccer and golf.

Annual gala salutes Shirley Jones and Richard E. Rauh for their starring roles in Playhouse history

Legends of the Pittsburgh Playhouse

by Colleen Derda

Two luminaries who have played leading roles on stage and behind the scenes at the Pittsburgh Playhouse will be honored at *The Playhouse Rocks Starmakers*, the University's fundraising gala for the Conservatory of Performing Arts. Shirley Jones and Richard E. Rauh will receive the prestigious Starmakers awards at the event on April 2 at Stage AE. The Point talked with Jones and Rauh about their longstanding ties to the Pittsburgh Playhouse.

Shirley Jones

"The Pittsburgh Playhouse is the reason I am in show business," says Shirley Jones, well-known star of stage and screen.

Jones credits the Playhouse with giving her the start on stage that she parlayed into her career on Broadway, in movies (including an Academy Award) and television.

Jones was introduced to the Pittsburgh Playhouse, the region's premier performing arts facility, shortly after coming to "the big city" for private voice lessons. The young woman from Smithton, Pa., soon began spending her

summers working behind the scenes and on stage. "We did everything in that building. We took acting lessons, built sets and took dance classes," she recalls. In 1952, Jones won the "Miss Pittsburgh" contest, which included a scholarship to Playhouse drama classes, so she spent the next year working in Oakland. With her singing ability and theatrical flair, she often was cast in Playhouse productions. In the 1952/53 season, she appeared in five plays: *Dance for Joy*, *Three to One*, and the children's plays *Robin Hood*, *Rumpelstiltskin* and *Land of the Dragon*.

"I was the queen of children's theater at the Playhouse! I just loved playing the characters, especially those from fairy tales."

In 1953 she also appeared in *Lady in the Dark*, a Pittsburgh Civic Light Opera production at Pitt Stadium. That summer, she found fame in New York City when writer and composer Ken Welch suggested she attend an open audition for the legendary songwriting duo Richard Rodgers and Oscar Hammerstein II. The story goes that the casting director called for Mr. Rodgers to personally listen to her. Jones was soon cast in *South Pacific* and offered a personal contract. Shortly after that she was called to test for the movie version of the musical *Oklahoma!*, winning the lead role of Laurey. A starring role in the film *Carousel* followed in 1956.

Jones showed her dramatic range in *Elmer Gantry*, for which she won an Academy Award for Best Supporting Actress. She returned to musical theater with the 1962 film *The Music Man*. By the 1970s, Jones had appeared in multiple television roles, including four seasons as the famous musical mom in *The Partridge Family*.

Today, Jones continues to appear on television, in movies and on stage. In addition to resort appearances in Arizona and theater performances in California, this spring she will film the comedy *Family Weekend* with Kristin Chenoweth. And she returns to Pittsburgh in early April for the University's annual gala, *The Playhouse Rocks Starmakers*. Jones, who received an honorary degree from Point Park in 1991, says she looks forward to the opportunity to return to her show business roots and celebrate the Pittsburgh Playhouse.

"The Playhouse gave me a place to work on my craft and learn from professionals. It was truly a wonderful place."

Richard E. Rauh

"People still say, 'Let's see what's going on at the Playhouse,'" says Richard E. Rauh about the performing arts center's distinguished status for more than 75 years. "It's really incredible."



Rauh has a vantage point shared by no other.

He appeared on the Playhouse stage, directed the long-running Playhouse Film Series, saw that the Rockwell Theatre received a new sound system, taught countless students and provided seed funding for the University's first New York City theater showcase, to name but a few of his personal connections.

His roots run deep. In a sense, he has been an important part of the Playhouse, and the Playhouse has been a part of him, throughout his life.

One of the high points came in 1999 when he dedicated the Rauh Theatre in honor of his parents, Richard S. Rauh, who helped to establish the Playhouse during the Great Depression, and Helen Wayne Rauh, who acted on its stages and supported its development for amateurs and professionals alike.

He continued his parents' commitment by documenting the Playhouse's history and fueling its growth. He recently donated to the University his family's collection of Playhouse playbills. And he provided seed funding toward plans to build a new Pittsburgh Playhouse downtown.

"Richard personifies the Pittsburgh Playhouse," says Ronald Allan-Lindblom, artistic director of Point Park's

Conservatory of Performing Arts. Rauh's lifelong commitment to the arts can be seen throughout the region. Pittsburgh Musical Theater's Richard E. Rauh Conservatory school is named for him. The Richard E. Rauh Theatre can be found in Shady Side Academy's Hillman Center for Performing Arts. And he has honored his parents' commitment to Pittsburgh cultural institutions with donations in their names, including the Helen Wayne Rauh Rehearsal Room at The Pittsburgh Symphony and the Helen Wayne Rauh Theater at Carnegie Mellon University's Purnell Center for the Arts.

Rauh's acting career includes Playhouse productions of *Star Spangled Girl*, *You Can't Take it With You*, *Brecht on Brecht*, *Driving Miss Daisy*, *Krapp's Last Tape* and *Little Shop of Horrors*.

"The Playhouse went all out for the 1986 production of *Little Shop of Horrors*," recalls Rauh, who starred as Mr. Mushnik. "They [used] the original designs and built amazing man-eating plants... Ken Gargaro directed and Edie Cowan from the original Broadway show worked with Ken. We had 10-hour rehearsals a day." Rauh did two things in that show that he hasn't done since: sing with a rock band and dance in midair. "I still don't know how I did it," he says.

Krapp's Last Tape, in 1998, was his biggest stage triumph. "The [one-man show] is a very intense piece of theater," he says. "It tested me beyond anything I've ever done."

Rauh has also acted in more than 30 Little Lake Theatre productions and appeared on the stages of City Theatre, Baldwin Community Theater and Heinz Hall. The latter was a special production of *Of Thee I Sing*, the musical with score by George and Ira Gershwin (whom Rauh's parents knew).

Rauh also appeared in the 1999 movie *Inspector Gadget* and represented the Playhouse in the documentary *Something About Oakland* by Rick Sebak.

Everything returns to the Pittsburgh Playhouse with Richard E. Rauh. According to the University board member, actor, educator and philanthropist, the Playhouse will always have a "strong emotional connection with Pittsburghers." He looks forward to its "exciting new beginning" Downtown.

"There will always be a Rauh Theatre," he notes, "in the Pittsburgh Playhouse."

Above right: Richard E. Rauh. Photo by Tom Bell.

Have you ever received a new cell phone and returned it to the store because it wasn't working quite right or you didn't like how it worked? Or bought an expensive electronic tablet only to suffer from buyer's remorse? Or worse yet, just thrown away a broken electronic out of frustration or a no-return policy? In the consumer retail world, the return of electronic goods is big business as companies begin to focus not just on getting a product to market, but also on returning and recycling products to reduce waste. This business trend, known as reverse logistics, was the focus of a paper that **Lori Molinari**, D.B.A., assistant professor of business management, presented at the Second Annual Sustainable Enterprises of the Future Conference at Robert Morris University in September 2010. Molinari received a best paper award for "Reducing E-Waste of Consumer Electronics through Reverse Logistics." The Point talked with Molinari:

What is reverse logistics, and why is it important to businesses in today's competitive environment?

LM: Reverse logistics is the process in which a company becomes more environmentally responsible through recycling, reducing and reusing materials in an attempt to cut down on the consumer electronics that are being sent into landfills and the environment. It starts with the process for returning and exchanging electronics back to the point of origin. For example, with phone replacements that are still under warranty, a company may replace the phone with a refurbished/like-new phone (instead of throwing it away and sending a new phone). Other options for companies are to repackage and return the item to inventory; destroy or sell it as scrap; turn

it over to a third party to resell; or donate the item to charity.

In addition to teaching, you also work in the business world implementing reverse logistic practices. What exactly do you do?

LM: I work for Ingram Micro Logistics as senior director of business development. We help companies optimize their supply chain efficiencies including inventory management, accuracy, same day shipping and multi-channel fulfillment, as well as transparency, reverse logistics, quality, security, scalability, flexibility, customer service excellence and sustainability. I'm also president of the Pittsburgh chapter of the Council of Supply Management Professionals Pittsburgh Roundtable (CSCMP), which promotes networking, educational and developmental opportunities to supply chain professionals in our region.

How do you use your consulting and business expertise in the classroom?

LM: I share my business experience with my students in all of my courses, which includes quantitative methods, marketing and global business. My expertise brings the real business world into the classroom where it can be applied to student learning. These are applied lessons for my students to better understand organizational green reputation and how sustainable initiatives can affect customer purchasing behavior.

What do you think are the future business trends for returning and reusing consumer electronics?

LM: Companies are seeking people with knowledge and expertise in reverse logistics because it is a valuable practice that allows them to maximize efficiency while minimizing costs. There hasn't been much research in this area, so there is a vast opportunity to do more research on reducing e-waste in consumer electronics through reverse logistics. Companies will continue to provide a way for consumers to make these returns. And for students, there will be an increased need for knowledgeable individuals who can work to decrease costs and optimize the supply chain while preserving the environment.

What advice would you give businesses and general consumers as they deal with returning electronic products?

LM: First, look into programs and companies that offer a way for you to return your electronics. For instance, AT&T will collect used cell phones from any carrier and handle the recycling process for consumers. Second, be sure to properly wipe all information from the device and prepare it for recycling, most programs ensure that this part is done for you. Send it to the company to handle disposition of the product. Often there are precious metals, LCDs, batteries and other high-value parts that the company can reuse or keep in the supply chain. Finally, do not throw away electronics. The batteries and metals can be harmful to the environment so they need to be properly disposed of, and are often reused in the forward flow of fulfillment.

Photo by Martha Rial.



Lori Molinari Happy Returns and Less E-Waste Through Reverse Logistics

by Camille P. Downing



Point Extra

For more conversation with Lori Molinari, visit The Point online at www.pointpark.edu/News/ThePoint



All in the Family

Bob Pompeani and daughters Chelsea and Celina make Point Park, broadcasting, a tradition

Ask anyone who follows local sports in Pittsburgh, Pa., Pompeani is practically a household name. Bob Pompeani (COM 1982) has spent the last 28 years living and breathing sports broadcasting at KDKA-TV since he graduated from Point Park with a degree in journalism and mass communication. He will address graduating students at the 2011 commencement ceremony on May 7 at the Consol Energy Center.

"I loved sports, I always have. I'm a big believer that anyone who gets into anything in life has to be passionate about it. If not, you're wasting your time, probably," says Pompeani. The sports director broadcasts a TV sports call-in show seven nights a week and anchors sports at 5, 6 and 11 p.m. Add in pregame and postgame shows during the Pittsburgh Steelers football season and special sports coverage like the

by Nancy Commella

2011 NHL Winter Classic in Pittsburgh on New Year's Day, and it's no wonder Pompeani occasionally works 17-hour days.

His passion for sports began as an athlete in baseball, basketball and golf in high school in Hopewell Township, northwest of Pittsburgh, where he grew up. He was forced to give up his first love, though, when he had to undergo the first of two open-heart surgeries before his senior year. Pompeani believes it was God's way of telling him he was not meant to be a professional athlete. "That's what led me to think, 'I have to make sports a part of my life, how do I do it?'"

In attending Point Park, Pompeani says the fact that professors had been in the broadcast journalism business made a big difference. "It gave me a lot of opportunity to meet a lot of good people. Internships were huge."

It was his internship at KDKA-TV, and giving 110 percent every day to his work, that resulted in Pompeani being hired shortly after graduation. It's also what he attributes to the rare feat of working at the same TV station for nearly three decades in what can be an unstable industry. "I've gone through eight different news directors, lots of GMs (general managers), and everybody has different tastes. You never know if you're going to be part of their tastes. I always work hard, and I've never changed that. I try to tell it to my kids."

It was Pompeani's love for his Point Park experience and his career that led his two daughters, Chelsea, 21, and Celina, 18, to follow in his footsteps. "He loved it here (Point Park); he talked highly about it all the time," remarks Chelsea, a graduating senior in the University's broadcasting program.

Although her father never pushed her in any direction, Chelsea says hearing her father talk about how much he loved his work while she was growing up had an influence. "I would want to love my job like he loves his," she says.

For Celina, a freshman broadcasting major, the desire for a television career came about more by osmosis. "I remember in third grade, I always wanted to be him and do what he does. I loved going down to the station, and he would put my sister and I at the news desk, and we would practice reading. So, we kind of just got into it ourselves."

Celina says Point Park was her first choice, not only because of the experiences of her father and sister but also her uncle. "He would tell me how great it was, too." Bruce Pompeani (COM 1984) has a successful advertising career.

Both Chelsea and Celina believe Point Park's program and their father's career path will help them in a competitive industry, but as their father always reminds them, "an 'in' is just an opportunity. It's what you do with that opportunity that will define you."

One of Pompeani's favorite sayings is 'hard work beats talent when talent doesn't work hard.' His hard work has led to many awards, including the Golden Quill, Emmy and Associated Press.

His career and accomplishments would not have been possible, Pompeani says, without the support of his wife, Lisa, whom he credits with raising two 'great' daughters. "Lisa always understood my crazy hours, which gave me the opportunity to do what I do. Without her, that does not happen."

Opposite: Bob Pompeani visits campus. Below: Chelsea (left) and Celina Pompeani in the Lawrence Hall lobby. Photos by Jim Jiudkis.



HONOR ROLL to BENEFACTORS ▶

The alumni, Board of Trustees, faculty, staff and students of Point Park University gratefully acknowledge the generosity of the following donors during the 2010 Fiscal Year. The gifts listed here were made between September 1, 2009, and August 31, 2010.

PRESIDENT'S CIRCLE

Ronald Allan-Lindblom
Dennis and Jill Astorino
Trudy Avery, J.D.
Elma Bennett
William Blair
Dolores Bold*
Jon and Donna Boscia
Richard and Anne Marie Boyd
Mike and Susan Boyle
Mark Broadhurst
Nancy Bromall
Elmer Burger, II
Mr. William Cameron and Dr. Cathy Cameron
James D. and Darlyn Campolongo
Guy Catania
Lynn Cummings, Esq.
Gary Davis
Debra Konieczka and Michael DeCourcy
Elizabeth Dedrick
Gary M. and Mary DeJidas
Bradley Duda
David Duncan
Richard Finley
Richard Fisher
Rose Gabbianelli
Mariann and Dr. Stan Geyer
Thomas Grealish
Joseph and Maria Guzzo
Edward Haberle
Joseph B. and Elizabeth Havrilla
Tracy and Dr. Katherine Henderson
Paul and Colleen Hennigan
Mr. and Mrs. C. Talbott Hiteshow
T. Dixon Holladay, Jr.
Marilyn and Ronald Horner
Dr. Timothy Hudson
Dr. Angela Isaac
Don and Marilyn Jenkins
John and Elizabeth Lavrinc
Argie Leech
Anne Lewis and C. James Zeszutek
Bridget Mancosh
Eric K. and Branita Mann
Dr. Timothy McGuire, Sr. and Dr. Nancy Melone
Dr. Karen McIntyre
Kevin and Kristen McMahon
James Meredith
Cheryl and Jimmy Miller
JoAnn Moller
William Molloy
Dr. Margie Morgan and Dr. Peter Ruane
Todd and Miriam Moules
Lisa Patterson
Dr. Charles and Ruth Perkins
Lucas B. and Renee Piatt
Dr. Charles Quillin
Richard Rauh
Susan Rinaldo Higgins

Gregory Rogers, J.D.
Drs. Ellen A. and Loren H. Roth
Carol Savage
W. Gregory Schmid, III
James Schnare
Angelo Sciuilli
Jeffrey Sherman
Dr. J. Matthew and Dr. Janet Simon
Philip and Ann Smith
Steve Stein
Maryjane Sunder
Mary Beth Taylor and Earl Bohn
John Tomayko, Ph.D.
David Vinski
Andrea J. Wachter
Edward C. Wachter, Jr.
Drs. Milton and Nancy Washington
Dr. George R. and Mrs. Kathleen White
John Yugovich
Drs. Nancy and Richard Zelonka
MARC USA/Stuart M. Zolot

ALUMNI

1961
Julia Johnson
Helen Maddocks
Mary Catherine Mason
Margie McCall
Nancy Reedy
Naomi Sapir

1962
Andrew Caliguiri
Adrienne Hughes
Arlene Moses
Karen Vormack
Roger G. Williams

1963
Anonymous
Nancy Carns Potts
Carmen D'Ambrosio, Jr.
Darlene Guest
Martha Hoegle

1964
Sheila Broman
Margaret Jamieson
Patricia Kline
Bernard Murray
Warren Pete
Thomas Sapienza
Robert Swider, Sr.

1965
Dennis Champ
Samuel Cover
Connie Dezanet
Marilyn Infante
Karen Kurimcak

Jayne Rydzak
J. Watkins Strouss
Ellen Tambolas
Judith Utt

1966
Earl Acquaviva
Eileen Byrne-Borland
Norma Hamill
Thomas Little
Frank Long
James Peters

1967
Robert Bradley
Geraldine Brennan
Gary Davis
Carol Donaldson
Ronald Freiwald
Emma King
Dr. John McCutcheon
Noreen Muha
Carol Neely
M. Lawrence Shields, Esq.

1968
Anonymous
Frank Barbosky
William Blair
Kathleen Crawford
August R. Derito
Sandra Dolence
Walter Gregory
Rand Hudson
James Krut
John Lender
William Maneese
Donald Martini
John McFarland
Joseph Panarella
Janice Rihely
Rick Santa
James Schafer
Stephen Tatrai
Peter Townsend

1969
Anonymous (2)
Joann Andrus
Norman Armonat
Kenneth Blair
Cabrini Bruun
Nancy Davis-Kahrs
Joseph Donovan
Richard Dyer
Robert Farber
Donald Giudici
David Hamill
Dr. Clair Hayes, III
Cecia Hess
Bonnie Hoch

Robert Jones, Jr.
John Kalcevic
Jane Katz
Ellen Kitay
Michael Kotora
Albert Kowalewski
Dale Marchand
Michael O'Neil
David Pantalone
Raymond Pastorek
Marie Popp
Robert Ripley
Jan Gruber Rygert
Deborah Saline
Robert Saline
William Shuty
Francis Smith, Jr.
Grace Stranahan
Nicholas Vrabel
Kenneth Watterson
John Yugovich
Mary Zdarko

1970
Douglas Anderson
Richard Andrus
Michael Baran
E. Bellisario
George Bromall, J.D.
Theodore Butler
Robert Caughey, Jr.
George Allen Clark
Richard Conwell
Rodney Danco, Jr.
Ronald Daugherty
Dianne Devin
Rick Devin
Henry Ehlers
Thomas Filer
Richard Finley
Robert Gonda
Kathleen Harrell*
Karen Hill
Donald J. Jenkins
Dr. Jeffery Jones
Robert Klucsor
Edgar Kobak
Kenneth Krall
Jeneane Langenbacher
Ernest Lawrence
Sara Leary-Haas
Richard Linzer
Donna Maule
Nancy McCaffrey
Richard McClean
Edward Meena
Art Mewherter
Stephen Paulovitch
Louis Roberts
Carl Rubin
Larry Shanley
Harry Smith
Olivetta Smith
Steve Stein
Charlotte Stotemyer
Charles Tague
Richard Trainor
Denis Vinski

1971
Ida Alexander
Dennis Beran
Robert Bogaski
John Brush
Judy Davis
Robert Depasqua
Madell Dobrushin
Thomas Driscoll
Bohdan Durkacz
James Fischl
Harold Fozard*
B. Tate Fulton
Alice Furman
Gary Gelfo
Richard Goldberg
Joseph Greco
Martha Groll
Richard Haskins
Harry Heh, Jr.
Daniel Hubert
Roderick Jeffries
Paul Kirchner
Joseph Little
Albert Lucci
Joseph Luvara, Esq.
Donald March
Donna Mega
Marilyn Mercado
Ruth Novak
Paul O'Neill
Daniel Pie
Eugene Reid
Edward Ritchie
Shirley Ritchie
Michael Rosenberg
Sharon Rosenberg
Anthony Russo
Dr. Marcia Schachner
Karl Schmidt
Lanny Seed
Francis Sehn
Nicholas Simile
Charles Sperandeo
Frank Stickel, Jr.
Ronald Telesko
Thomas Ulam
Bruce Varga
Katherine Vidakovich
William Walsh
Lynnwood Will
Edward Wuenschell

1972
Anonymous (2)
Margaret Cavanaugh
Dennis Cestra
Terrence Cleis, Sr.
Donald Colaizzi
Eleazer Comstock, Jr.
Dan Davis
Gary DeJidas
Ronald Etzel
Kenneth Fisher
Susen Friday
Patricia Illig
Dennis Iurlano
Dennis Klimo
Edward Knapp
Michael Krizner

Robert Kulpa
Robert Lukas
Daniel McKenna
Thomas Mesler
Barbara Moody
Elizabeth Mudge
John Panza
John Petrisko
William Powell
Dale Raymond
Martha Rhone
Gregory Rice
Jeffrey Rozran
Angelo Sciuilli
Joseph Tarara
Charles Thatcher
Thomas Thomas
Douglas Weidner
Ray Wilde
John Will
Daniel Willoughby

1973
Anonymous (3)
Charles Arent
Edward Bartek
Eric Bauer
Robert Begg
Frank Bischak
Jon Boscia
Terry Breitbord
Nancy Bromall
Russell Brown, Sr.
Gregory Chiappelli
John Deriggi
Joseph Emanuele
William Flaherty
Terry Hagenbuch
Steven Herz
Deborah Hooten-Kioussis
Sandra Israel
Thomas Josephi
Richard Kalos
Eileen Kiley
Richard Kowiatek
Charles Kuznicki
Ronald Mangan
Harry Pehote
John Pery
James Pfister
Russell Pixley
Darryl Rung
Wilson Saul
Carol Savage
Henry Schall
Sandra Schillinger
Michael Scudder
Kenneth Simon
Sally Smiley
Charlotte Stabile
Lois Thomson
Mary Thorpe
James Todaro
Joseph Walker, III
William Welch
Jennifer Wells
Randall Zotter
James Zumbo

HONOR ROLL BENEFACTORS

1974

Robert Abel
James Boyce
Frances Brooks
John Busko
John Fitzpatrick
Betty Fragoso
Robert Goetz
Thomas Kayser
Stephen Kielnar
Lloyd Klein
Sharon Klingler
John Krajnak
Anita Lorek
Dean McCorkle
John Mitchell
Zygmunt Paclawski
Nancy Pearson
Richard Pegher
William Pitt
Janis Purins
Vincenne Revilla Beltran, Ph.D.
Dana Richards
William Sargent
Rosanne Saunders
James Schnare, Esq.
Susan Scott
Leslie Shar
Janet Shay
Patrick Shingleton
Cathie Skoog
Eugene Szestak
Candy Williams

1975

Anonymous
Beth Adamczyk-Glick
Don Bialon
Harold Blye
Richard Clark
Daniel Cordell
Donald Eckerle
Helen Fallon
Janet Ference-Gipp
Jack Forman
Irene Gramza
Francis Hicks
Garnet Hoffman
Mohammad Homayoonfar
Maurice Horne
Steven Lay
Linda Leong
Alexander Lezark
Roberta Lohr
Joseph Malloreay
John Milko
Peter Minydzak
Marilynn Mollica
Vaunda Nelson
Douglas Ormay
Edward Povirk
Dr. Judith Rowlands
William Sinclair
Todd Stephenson
Cheryl Stockton
Deborah Stranger

1976

Dennis Brong
Bruce Burwell
Edward Castner
Laura Colton
Richard Eismont, Sr.
Joseph Funaro
William Heavner
Daria Hemmings
Richard Herman
John Kovach
Carol Labasik
B.Wayne Lohr
Paul Murphy
Charles Neidig
Diana Neidig
Rita Parlato
Maryann Pauline
Paul Romagna
Phillip Sinopoli, Ph.D.
Monica Skaggs
Mark Weber

1977

Frank Balestrieri
Allan Boggs
William Cole
Helen Early
Maria Frantz
Rose Friday
Michael Hanczar
Robert Ivey, Jr.
Carmen Pellegrino
Eugene Petcovic
David Reichenecker
James Russell
John Stuper
Mary Beth Taylor
Edward Tirpak
Jeffrey Turk

1978

Martha Barry
Robert Boscia
Anthony Dyda, Jr., Ph.D.
Mark Fehr
Michael Fetchko, Esq.
Pamela Golden-Loder
Sharon Hart-Rhodes
Paula Herman
Mary Kempffer
Daniel Lundie
Christine McClure
Rev. John McCoy, Jr.
Kimberly Merge
Teddy Nisenbaum
Alan Rabinowitz
James Rushin
Albert Senic
Bruce Steele
Margaret Stewart
Kevin Tomasic

1979

Anonymous
Michael Bewak

Michael Bondi
Carol Boyle
Juanita Carter
Sharlene Caveeck
Charles Collins
Pasquale Didomenico
Eric Dotterbock
David Duncan
Christine Ebben
Susan Fehr
Casey Gnage
Wendy Gyurisin-Brode
Edward Haberle
Joseph Hunter
Thomas Lubanovic
Gloria Macin
George Markovic
Robert Napkori
Kim Payne
Peggy Sanders
Cheryl Sella
Bernard Smith
Maryjane Sunder
Robert Tarpey
Andy Zibritosky

1980

Anonymous
Michael Barry
Albert Borgony, Jr.
James Caskowski
Linda Daniels
Cheryl Druga-Ford
Janet Evans
Randall Gratchick
George Hertrich
Deborah Levy
Alan Lutz
Doreen McCallister
Jimmy Miller
James Silvestri
Randy Skubek
Eric Slifkin
Ann Smith
Philip Smith
Gina Snyder
Stephen Williams

1981

Anonymous
John Becker
Theresa Card
Sharon Carter
Nancy Chicchi
Michael DeCourcy
Robert Geeting
Joseph Gribbin, Jr.
Philip Harris
Emem Ibok
Gary Kissell
Matthew Lackovich
Ellen Linebaugh
Michael Listorti
Jon McCarter
James McKeen
Nelson L. Mellitz

Eileen Noden
Charles O'Donnell
Melvin Paul
James Peiffer
W. Gregory Schmid, III
Daniel Skrabski
Bertha Williams-Northington
Denise Yourick

1982

Anonymous
Beth Anderson
Joann Brewer
Kathleen Carson
Bettie Cole
Debra Konieczka
Cynthia Dinger
Robert Ferrari
David Godlewski
John Goodnight
Virginia Ihrig
Susan Jenny
Janet Kerlin
Stephen Kline
Charles Krall
Melvin Lager, Jr.
Beth Marcello
John Mikach
Kathleen Nelson
Dr. Rosanna Perotti-Bouzaidi
Carole Reinert Lucas
Amy Saunders
Peter Wentzel
Mary Anne Willmore
Edward Wisniewski

1983

Laureen Alt
Robert Ashford
Nanci Barone
Susan Beebe
David Brady
Frank Cefali
Anthony Costanzo, Jr.
James Dohner
Melanie Fitzpatrick
William Fogle
Brenda Hecker
Richard Joschak
Gloria Leonard
Marita Mathews
Patricia Matysek
Jean McLean
Dr. Stuart McLean
Mark Minoski
Christine Peters
Theresa Poppell
Thomas Sikora
Sharon Sweeney
William Thompkins
Todd Tomasic
Tracey Wassel
Edwin Wintermyer
Janet Zegar

1984

Francine Abraham
Jill Anderson
Tony Banks
David Breakey

Richard Brentin
Keith Carney
Ron Cicchinelli, Jr.
Robin Claudio
Denise Davis
Joseph DeCarlo
Mary Ferrance
Susan Friedman Grant
Amy George
Richard Griffin
Thomas Harshberger
Andrew Helgeson
Renee Illes
Gary Kammeraad*
Dana Keane
Christine Keefer
Jay Keefer
Robert Kirschner
Eric Kresh
Mark Kulwik
M. Kathleen Leonard
Sheila McKenna
Eunice Nasri
Gina Palmer
David Peart
Susan Piccirilli
Patricia Preisinger
David Prevost
Linda Riggs
Philip Scholl
Michelle Simpson
Richard Sofelkanik
Melissa Sofia
Barbara Steinberg
Justin Supon
Lee Veri
Mary Vesely
Andrea J. Wachter
Elizabeth Wilhelm
Lori Wirth

1985

Anonymous
Edward Bittner
Dorothy Conway
Karen Ervin
Shari Hlutkowsky
Joseph Honeychuck
Loretta Hurley
Natalie Kammeraad
Kathleen Knapp
Darlene Marnich, Ph.D.
Nancy Milinski
Drew Neapolitan
Michael Pavia
Paul Schwartz
Paul Sikov
Donald Stanich
Margaret Tolbert
Robin Walsh
Robert Welch, III

1986

Anonymous
Jamal Al-faleh
Melinda Bier
Nancy Faust
Linda Gabler
Thomas Henninger
Thomas Knodle

Audie Lloyd
Archish Maharaja
Diane McLean
Janice Miller
Kathleen Mills
Roy Munshower
Steven Oberst
Nancy Parker
Joyce Polovich
Cyril Puhala
Joseph Rutter
Deborah Sappie
Andrew Shaul
Jeffrey Sherman
Sherry Snyder
Gary Sphar
Keith Vollberg
James Wright

1987

Ronald Akins
Anna Antolick
Adam Bishop
James Crowley
John Dalton
Patricia Grindel
Nadine Hlad
Jennifer Irwin
Robert Joe
David Klima
Marciann Marcus
Richard McMillen
Michelle Merlo
Lori Odrey
Robert Poklemba
Robert Presutti
Robert Reinheimer
Barbara Zirngibl

1988

Anonymous
Donald Anderson
Jeffrey Bogdan
Deborah Branthoover
David Croyle
Benita Duckett
Linda Haberstich
Julie Halapchuk
David Hall
Carolyn Hart
Joan Hoffman
William Joyce
Eric Lindquist
Richard Luksik
Norman Marts
Lisa McIntyre
Brian Mueller
Marybeth Rosendale
James Ross
Terri Shumaker
Wendy Spratt
David Wagner
Albert Weigand
Catherine Yakemovic
Georgia Zeedick

1989

Robert Andrey
Jeffrey Bachner
Dale Cepull

HONOR ROLL ☪ BENEFACTORS ▶

Lee Chottiner
Philip Cleaver
Andrew Contrael
Richard Cosgrove
Shawn Cupec
John Curigliano
Bradley Duda
Michele Fester
Robert Fester
William Gross
Joseph Guzzo
Maria Guzzo
Patricia Konesky
Roberto Lacayo
Vincent Le Donne
Rhonda Nixon
Josiah Osibodu
Susan Rinaldo Higgins
Alice Saxon
Patricia Scott
Alice Slagle
Kathleen Szwarz
Gregory Tims
Jenny Valente
Debra Valentine-Gray
Angelo Verdone

1990

Anonymous
Gregory Babicz
Robert Babyak
Teresa Commisso
Sarah Cox
Robert Fichter
Michael Fladeland
Maryann Freehling
Ellen Gamble
Joseph Harris
James Maravich
Carole Monaco
Jack Puglisi
James Rebraca
Patrick Riley
Ann Marie Ryan
Russell Salminen
David Smeltzer
Marie Stadulis
Karen Stauffer
Linda Suica
Joseph Weigl
William Wright
Patricia Yauger

1991

Anonymous
Kara Bellora
Mark Boris
Mark Brasili
Anita Durkan
Nicholas Epitropoulos
Clifford Gallik
Darrell King
Laurie Kozbelt
Patricia Kummick
Philip Kushnar
Tracy Luppe
Anthony Meneo, III

Cynthia Mols
Monica Nogueira
James Nolan
Michael Paprocki
Jill Pecht
Stacy Rebraca
James Rhoades
Thomas Schaller
Geraldine Stecko
Stephen Yarnot

1992

Anonymous
Francis Arnold
Sandra Barancyk
Charles Beatty
Anita Betschart
Monica Compton
Laura Ellis
Theresa Gallagher
Raymond Gambino
Kellie Gates
Chiara Griffin
Darlene Hackney
James Joiner
Karyn Kwiatkowski
Richard Maharg
Ronald Matthews
Robert McLay
Jeff Nimerosky
Jennifer Paty
Richard Pentz
James Piroli, II
James Schultise
Fredric Sheaffer
Carol Stein
Francis Tiboni, Jr.
Rocio Velez
Richard Walters
Kathy Williams
David Wintermute
Rick Wirth
Sandra Young
Stuart M. Zolot

1993

Anonymous (2)
David Anselm
Robert Butelli
Homer Carter, Jr.
Mark Cornyn
Renee Donahoe-Ziegman
Thomas Funk
Kristina Gaither
Wayne Grabiak
Richard Grguras
Thomas Hillman
Robert Marcink
Donald Mason
Susan Orr
Keith Radakovich
Rita Ricci
Frederick Thorpe, Jr.

1994

James Alexander
Yvonne Balouris

Robert Barth, Jr.
Daniel Bergstrom
Brett Canimore
Paula Day
Mona DeRenzo
Jeannette Dougherty
Shiloh Fonseca
Wilmer Fox, III
Karen Frindy
John Fritz
Thomas Hopper
Natalie Kapeluck
Stephen Lazur
Nancy Long
Clement Lovasik, Jr.
Cheryl Mann
Robert Martinac
Thomas Maus
Ronald Mikolajczyk
Brian Miller
Christine Nooning
Lori Pintar
Steven Puluka
Stephen Rudinec
Mary Clark Scott
Rev. Tamerya Smith
Kimberly Steudler
Debra Voller

1995

Anonymous (2)
Heidi Aitken
David Anderson
Richard Bishop
Randolph Bowers
Philip Clarke
Karen Coburn
Paula Cox
Bernice Goodall
Janet Gray
Patricia Hippler
David Kirshner
Kiesha Lalama-White
Lawrence Martin
Joann Seifried
Michael Shriane
Barbara Smith
Judith Weismann
Justin Wingenfeld

1996

Anonymous
Jeffrey Adams
Suzanne Barth
David Boguszewski
Edward Brown
Susan Crawford
Linda Guercio
Wendy Follansbee Homerosky
J. Kevin Kelly
Glenn McCann
Carol Monticue
Natalie Sacco
Ronald Wadowsky

1997

Anonymous (2)
Helen Adams
Dolores Bold*
Jeananne Brandsberg
Dale Campbell
Beth Conner
Jeanne Dutel
Patricia Garritan
Steven Hallock
Stacey Heyward
Arlene Hicks
John Lavrinc
Cynthia Marynak
Lucille Mason
Catherine Schmid
Wendy Setterberg
Yang Shi
Jim Simco
Tracy Slater
Susan Tresatti
Genea Webb
Michelle Wilden

1998

Anonymous
Adam Bernstein
Amy Cesario
Thomas Dandrea
Anthony Hruska
Christine Kocian
Erik Saline
Donna Schilinski
Sam Suica
Barbara Waxenfelter

1999

Brian Belitskus
Regis Briski
Michelle Coultas
Frank Eggleston
Amy Giblin
James Hawrot
Chris Hays
Carl Hughes
Joe King
Kathleen Lewis
Jeffrey Long
Angela Love
Bryan McDermott
Anthony Patterson
Susan Penney
Sharon Pipilo
Adrian Posteraro
Rick Richards
Melissa Rossiter
Margaret Stampahar
James Stoner
Maria Villiotti
Ralph Villiotti
Jeffrey Woodard

2000

Deborah Bateman
Deborah Bey
Nadine Bognar
Tomeka Davis
Paula Dworek
Jane Falkowski
Daniel Meshanko
Dr. Lori Molinari

Louis Proviano
Ruth Rauluk
John Regule
Bonnie Sampson
Jane Stankus
John Taormina
Michael Tysarczyk

2001

Vernon Boozer
Mark Bowler
Paul Heckman
Thomas Laton
Gabe Pediconi
Michael Powell
Eric Rettig
Gary Smith
Marlana Walsh-Doyle

2002

Anonymous
Byron Ater
Edwin Burkhardt
Gregory Caruso
Francis Ferragonio, Jr.
Paula Flenory
Ralph Franco
Amy Greenwald
Karen Heim
David Hiller
Michele Langbein
Michael Lehman
Gloria Lewis
Nancy Lobaugh
Janette Pekar
Laura Smagala
J. Len Sperl
Angela Walsh
Jeffrey Wareham
Martha Williams
Margaret Wimmer
Philip Winters

2003

Calvin Anderson
John Chergi
Warren Depietress
John Frydrych
Theresa Greene
Karl Hoffman
Jill Loop
Laura Lord
Robert McDonough
Clifford Moskal
Martin Paonessa
Mary Rawson
Cheryl Riker
Michael Rogan
Corrine Satriano
Wendy Serapiiglia
Stephanie Walston
Charles Walters
Beverly Weber

2004

Anonymous
Amanda Aldridge
Michael Arnold
Natalie Batchen
Susan Bliss
Bernadette Bridge

Amanda Chase
Isaac Chery
Thomas Fillipone
Chris Fording
Gregory Graeff
Sally Grimes
Thomas Hamm
Patrick Kent
Amy Kier
Heather Kruse
Sharleen Lydon
Mona Monahan
William Moushey
Nicole Pianella
Donald Proehl, Jr.
Ruth Ridgway
Christopher Rolinson
Janell Runco
Misty Sandling
Jeffrey Smith
Sean Snyder
Louis Takacs
Susan Trkula

2005

Zlata Brawdy
Case Dillard
Thomas Foster
Kathleen Froncek
Abbey Helbling
Richard King
John Klinvex
Elizabeth Lavrinc
June Maier
Jay Mathia
Michael Montgomery
John Scarpino
Betty Shamblee
Leslie Smith
Tish Stromatos
Carrie Vogel
Ann Wagner
Cynthia Wirtz
Petroula Zoll

2006

Anonymous
Robert Bagwell
Cindy Barnett
Mollie Cecere
Theresa Chabala
Ronald Deutsch
Jodie Gutt
Jeffrey Hall
Marjorie Mackrell
Rachel Moslen
Linda Parks
Lisa Patterson
Joseph Pavlik
Thomas Phillips
Timothy Piotrowski
Emily Quidetto
Douglas Reed
Arianne Shean
Jolene Spannuth
Terrence Thomas
Lisa White
Misty Williams
Kimberley Wright

HONOR ROLL BENEFACTORS

2007

Aaron Bennett
Susan Linzer
Heather Lubay
Shaina Luntz
Caitlin Meals
Nicholas Paoletti
Christopher Rosage
Dale Ruediger
Marilyn Turner
Dena Valenza
Pamela Velez
Paul Vourron, II
Robert Weaver

2008

Maggie Bango
James Briglia
Shawn Bronson
David Brooks
Kellybeth Clawson
Daniell Dunn
William Elmes
Matthew Ferro
Bradley Fusco
Jennifer Jackson
Elaine Junio
Kelcy Luczak
Johnna Maryak
Rae Patton
Masheka Robertson
Kristin Thomas

2009

Jarrett Bittner
Dalton Good
Jody Johnson
Brenna Jones
Mark Kamyk
Brandy Loechner
Kristin Shivers
Natalie Taylor
Anthony Waters
Jennifer Weiland
Carl Zappa, III

2010

Christopher Hill
Keya Johnson
Terri Liller
Cayla Tulick
Kelleshia Whitaker

CORPORATIONS/FOUNDATIONS/ ORGANIZATIONS

Anonymous
3M Foundation
A.G. Mauro Co.
ABARTA Inc.
Abbott Laboratories Fund
AES Somerset, L.L.C.
AHRCO
Alcoa Foundation
AlliedBarton Security Services

American Plate Glass Inc.
American Telecom Corporation of
Pennsylvania
Andy Warhol Museum
Ann Smith Communications
Aon Risk Services Inc of Pennsylvania
Aramark Educational Services Inc.
Armstrong Foundation
Associates in Ophthalmology
Bank of New York Mellon Community
Partnership
Barnes and Noble College Bookstore Inc.
Baum Family Fund
BNY Mellon Charitable Foundation
Boscia Family Foundation
BP Fabric of America Fund
Broadhurst Family Fund of the Pittsburgh
Foundation
Buchanan Ingersoll & Rooney PC
Building Control Systems Inc.
Burt Hill Kosar Rittelmann Associates Inc.
CA, Inc.
Carnegie Science Center
Carol and Joe Massaro Family Fund
Catherine Mark Loevner Family Foundation
Chubb & Son
CJL Engineering
Cohen & Grigsby PC
Commonwealth of Pennsylvania
Continental Building Systems
Corning Incorporated Foundation
Cyrus, LLC
Dean of Shadyside Salon
Deer Lure Co. & B Kirschner Productions
Dell Direct Giving Campaign
Deloitte Foundation
Dickie, McCamey & Chilcote PC
Direct Mail Service Inc.
DLA + Architecture and Interior Design
Dominion Foundation
Eat'n Park Restaurant
Eckert Seamans Cherin & Mellott
Eden Hall Foundation
EDMC Inc.
Elg Haniel Metals Corp
EQT Corporation
Equifax Community Relations
Executive Management Services Inc.
Exelon Corporation
Federal Home Loan Bank of Pittsburgh
Federated Investors, Inc.
Feldstein Grinberg Stein & McKee
Fidelity Charitable Gift Fund
Fifth Third Bank
First Niagara
Fitz and Associates
GAI Consultants, Inc.
General Electric Company
Glaxo SmithKline
Graziano Construction Co.
Greenprints, Inc.
Halliburton Foundation Inc.
Harris Foundation
Henderson Brothers
Herbein & Company
Highmark BlueCross BlueShield

Hilda M. Willis Foundation
Hillman Foundation
Howard Hanna Realty
IBM International Foundation
Industrial Employees Inc.
ISM-USA LLC
ISS Pittsburgh
Johnson & Johnson Family of Companies
JPMorgan Chase Bank
L & K Marketing
Ladies Hospital Aid Society of Western PA
Lady Washington Bears
Lewis Glasser Casey & Rollins, PLLC
Lexus of North Hills
Lighthouse Electric Co. Inc.
Lincoln Square
Littler Mendelson
Maher Duessel
Mahla Office Equipment
Manheim Pittsburgh
MARC USA Inc.
Marsh Global Consumer
Martens Ice Klass Legghio & Israel, PC
Massaro Corporation
Maue Center Inc.
McKamish Chesapeake Inc.
MEDRAD
Merck Partnership for Giving
Merrill Lynch & Co. Foundation Inc.
Michael Baker Corp.
Microsoft Matching Gifts Program
Millcraft Industries Inc.
Montgomery County Intermediate Unit
Mullen
Multicultural Arts Initiative
Mutual of America
Nature Observer News
NIKE Employee Matching Gift Program
Norfolk Southern Charitable Match Trust
OC Reilly Inc.
Oxford Development Company
P. J. Dick Inc.
P.L. Frank Inc
PA Trout Unlimited
Pazos Entertainment
Pennsylvania Trane Inc.
PepsiCo Foundation
Pittsburgh Board of Education
Pittsburgh Child Guidance Foundation
Pittsburgh Civic Light Opera
Pittsburgh Steelers
Pittsburgh Transportation Group
Pittsburgh Zoo And Aquarium
PNC Bank NA
PNC Foundation
Precision Endodontics
Private Wealth Advisors Inc.
R & V Associates
Richard King Mellon Foundation
Richard P. Simmons Family Charitable Trust
Russell Charitable Foundation
Siemens Industry, Inc.
Sippel Co., Inc.
Sun Life Financial
TEDCO Construction Corporation
The Audrey Hillman Fisher Foundation

The Ayco Charitable Foundation
The Bobby Cremins Charitable Fund
The Buncher Family Foundation
The Charles and Jean Stout Family Fund
The Grable Foundation
The Heinz Endowments
The Hillman Company
The Pittsburgh Foundation
The Procter & Gamble Fund
The Susan and Richard Linzer Philanthropic
Fund
The Tomayko Group LLC
TKA Architects
Tucker Arensburg P.C.
Turner Construction Company
U.S. Bancorp Foundation
United States Steel Corporation
United States Steel Foundation Inc.
United Steelworkers District 12
Revolving Fund
United Steelworkers Local 3657
United Steelworkers Of America
University of Pittsburgh
University of Pittsburgh Medical Center
UPMC Health Plan
Vanguard Matching Gift Program
Verizon Foundation
Wealth Preservation & Management Inc.
Wells Fargo Foundation
Williams Coulson
WQED MULTIMEDIA
WTW Architects Inc.
YMCA of Pittsburgh
YWCA of Greater Pittsburgh

FACULTY AND STAFF

Anonymous (3)
Misty Abraham
Dr. Robert Alexander
Ronald Allan-Lindblom
Calvin Allen
John Arlet
Trudy Avery, J.D.
Kathryn Ballas
Tim Ballas
Shirley Barasch
Emily Barker
Natalie Batchen
Deborah Bateman
Kirkley Beal
Thomas Benish
Douglas Bentz
Jeffery Besong
Jarrett Bittner
Susan Bliss
Robert Boscia
Adam Bowser
Patricia Boykin
Jeremy Braverman
Philip Bray
George Bromall, J.D.
Edward Brown
Michael Bruno
Elmer Burger, II
Peter Calandra
Mr. William Cameron and Dr. Cathy Cameron
Nina Campbell
Guy Catania
Mollie Cecere

Alan Chamberlain
Dr. Christal Chaney
Roger Chipman
Christopher Choncek
Barbara Cinpinski, Esq.
Cheryl Clark
Dane Claussen
Kellybeth Clawson
Dana Collins
Megan Colt
Nancy Commella
Emily Conrad
Andrew Conte
Donald Cook
Heather Cook
Amy Cooper
Michelle Coultas
Sandra Cronin
Grace Cropper
Lynn Cummings, Esq.
Dr. J. Cupples
Charlene Cusick
Betty Davis
Mark Deer
Donna Dent-Nelson
Ronald Scott Deutsch
Robert Draper
Joan Dristas
Marcia Druga
William Elmes
Elizabeth Evans
Janet Evans
David Fabilli
Helen Fallon
Judy Faranda
Dr. Mark Farrell
Jennifer Fedele
Philip Feinert
Robert Ferrari
Michael Finnegan, Esq.
Debby and Nate Firestone
Angelio Florindo
Dr. Robert Fowler
Laura Frost
Antoinette Gall
Jan Getz
Mariann Geyer
Michael Gieseke
David Gieske
Dalton Good
Nancy Gordon
Gregory Graeff
Janet Gray
Sandra Greciano
Joan Grejda
Jeannette Griggs
Sally Grimes
Richard Gutkind
Catherine Gutowski
Peter Halapatz
Steven Hallock
Joan Hamby
James Hardt
Richard Haskins
Chris Hays
Alvin Henderson
Dr. Katherine Henderson
Paul and Colleen Hennigan
Christopher Hill
Amelia Hogan

Mohammad Homayoonfar
Jane Howell
Dr. Timothy Hudson
Kim Hyde
Dr. Angela Isaac
Frederick Johnson
Brenna Jones
Richard Jones
Kristene Julian
Brianna Kaiser
Martha Kalina
Eleanor Kane
William Kapsin
Amy Kier
Rochelle Klein
Janice Klembus
Samuel Kosanovich
Albert Kowalewski
John Krajnak
Dr. Dimitris Kraniou
Michelle Krepp
Jason Kukol
David Kukulka
Francine Kuzma
Sharon Kuzmanko
Kiesha Lalama-White
Anthony Landolina
Michele Langbein
Rebecca Lee
Dr. Robert Lewis
Terri Liller
Nancy Lobaugh
Brandy Loechner
Angela Lonogis
Heather Lubay
Elaine Luther
Kyle MacDonald
Michelle Macek
Archish Maharaja
Irene Main
Dr. Diane Maldonado
Bridget Mancosh
Arthur Marino, Jr.
Dr. Darlene Marnich
Mark Marnich
John Mayo, Jr.
Terra McBride
Dr. Karen S. McIntyre
Sheila McKenna
Michael McKown
Janet McLaughlin
Andrew McNeil
Edward Meena
Kimberly Merville
David Metinko
Kenneth Milchick
Joell Minford
Jan Mitchell Sherrill
Dr. Lori Molinari
Lynn Monahan
Ken Mori
William Moushey
Linda Mower
Elvir Muslimovic
Monica Nogueira
Robert O'Gara
Susan Orr
Kevin O'Toole
Kathleen Palket
Dr. Emmett Panzella

HONOR ROLL ☉ BENEFACTORS ▶

Martin Paonessa
Lori Pash
Marybeth Pastore
Donald Pastorius
Lisa Patterson
Rae Patton
Keith Paylo
Janette Pekar
Dr. Charles Perkins
Edward Perman
Elizabeth Peters
Thomas Phillips
John Pine
Michael Powell
Emily Quidetto
Dr. Charles Quillin
Michaelita Quinn
Alex Rachubinski
Ruth Rauluk
Christopher and Mary Rawson
Mary Reis
Dr. Vincenne Revilla Beltran
Lynn Ribar
Clayton Rios
Dr. Brent Robbins
Diane Robertson
Colleen Roell
Gregory Rogers, J.D.
Christopher Rolinson
Camille Rolla
Marybeth Rosendale
Jan Ryan
Bonnie Sampson
Corrine Satriano
James Saxon
Margaret Schafer
Steve Shanahan
Ariane Shean
Jack Shrum
Dr. J. Matthew Simon
Heidi Smith
Mary Smith Peters
Mary Ellen Solomon
Mark Sommer
Kelly Staley
Margaret Stampahar
Kristin Steele
Dr. Lorelei Stein
James Sutton
Daniel Swalga
David Syskowski
Shirley Tannenbaum
Edwin Tatters
Kevin Taylor
Natalie Taylor
James Thomas
Kristin Thomas
Loren Torres
Cheryl Valyo
Maria Villiotti
David Vinski
Andrea J. Wachter
Edward C. Wachter, Jr.
Robin Walsh
Beverly Weber
Dr. Portia Weston

Lisa White
Martha Williams
Misty Williams
Trudy Williams
Dr. Timothy Wilson
Philip Winters
James Wozniak
Christine Zapinski
Tom Zytka

PARENTS AND FRIENDS

Anonymous (21)
Alyson Abraham
Richard Abraham
Mr. and Mrs. Lawrence Acklin
Lynn Agee
Antoinette Alaio
Patricia Albert-McVicker
Douglas Allan
Mary Arienzo
Peter Ashurkoff
Elizabeth Bailey
Joseph Balcik
Brenda Baldwin
Mr. and Mrs. Todd Barats, Sr.
Brian Barbiche
David and Diane Barsottini
Mr. and Mrs. William Bashore
Mitchell Bassman
Mr. and Mrs. David Beazel
Amy Bellini
Jeanette Benabe-Algarin
Elma Bennett
Mr. and Mrs. Ronald Bennett
Roger Biedenbach
John Bitzer, III
Jane Bloodworth
Carolann Bobash
Ed Bognar
Candy Bohlinger
Denise Bonacci
Patricia Borden
Robert and Kathleen Boykin
Brianna Boyle
Kathy Boyle
Kelly Bradley
Teresa Brandt
Fred Branonvan
Richard and Karen Brean
Regis Brucker, Sr.
Elaine Brunken
Melissa Buddemeyer
Joe Burgunder
Mr. and Mrs. Paul Burich
Mr. and Mrs. Wayne Burkes
Christine Bursick
Larry and Christine Bursick
Candace Cain
Kathleen Calhoun
Susan Calhoun
Samuel Cammilleri
Aimee Campayno
Mark Carroll
Cindy Cash
Barbara Castanzo

Beverly Charles
Mr. and Mrs. Roy Chilton
Janet Chlebowski
Robert Clark
Edward Claypoole
Thomas Cochran
Jerome Coddington-Schillaci
Neil Como
Joan Connors
John Connors
Michael Connors
Susan Cornell
Mr. and Mrs. Daniel Crecca
Lisa Crider-Williams
J. Kent Culley
Mr. and Mrs. Robert Cumer, Jr.
Viola Cunningham
Mr. and Mrs. Randy Curtis
Anthony D'Alfonso, Sr.
Judy Davenport
Deborah Davidek
Myra Davidson
Mr. and Mrs. Stephen Davies
Sinnika Davis
G. John DeCoursey
Elizabeth Dedrick
Jeri DeLattre
Fernando Delavega, Jr.
Jocelyn Delgado
Angela DeMaria
Stephen DeMaria
Robert Denove
Mary DeRiso
Mr. and Mrs. Bernard DeSabatine
Timothy Desmond
Lori Dettore
Jasa Dickson
Lynn DiLiscia
Mr. and Mrs. Steve Dill
Robert Dinwoodie
Teresa Dix
Theresa Dobransky
Sharon Dold
Michael and Cynthia Donahoe
Mr. and Mrs. James Donohue
Marie Dorego
Roy Dorrance
Pamela Dorsey
Laura Dorunda
Vernon Douglas
William Dow
Ellen Doyle and Lawrence A. Frolik
Mary Doyle
David Driscoll
Victoria Duah
Dave Duesel
Mr. and Mrs. Richard Dunmire
Sandra Durso
Linda Eagle
Brandon Earnest
Mr. and Mrs. Mark Ecklund
Ty Eggemeyer
Deborah Englert
Mr. and Mrs. James Etling
Pamina Ewing
John Fallon

Mr. and Mrs. Timothy Fearby
Linda Fedorchak
Edward Feinstein
Zenaida Fernandez
Bruce Fickman
Edith Fisher
Lawrence Fisher
Richard Fisher
Karen Flasch
Alva Fleming
Adrienne Fogel
Felicia Franklin
Lois Freeland
Mr. and Mrs. Ken Frye
Colleen Fryer
Nancy Fugh
Sandra Fuller
Michael Fuoco
Susan Gaisbacher
The Honorable and Mrs. Robert C. Gallo
Kevin and Julie Garren
Cathy Gianella
Charles Gibbons
Bonnie Giel
Olga Giglio
Steven Gillespie
Jayne Glider
Jennifer Gnipp
Albert Goralczyk
Donald and Jennifer Grandis
Thomas Grealish
Mark Gregory
Mr. and Mrs. Lawrence Gurrera
Betty Halahan
Joanne Hallock
Mr. and Mrs. Craig Halma
Clyde Hare
Paul Harrell, Jr.
Marie Haug
Roman Hawrylyschyn
Cindy Henderson
Ruth Hendricks
Elaine Henigan
Blake D. and Sally A. Henry
James Hepburn
Lee Hertz
Christine Hestwood
Kelly Higgins
Sandra Higgins
Pamela Hock
Debora Hodill
Concetta Hogya
Donna Holjencin
Maureen Holland
Sharon Hollows
Maureen Honeychuck
Deborah Hood
Mary Horgan
Faith Hoskinson
Kenneth Houser
Kenneth and Lisa Houser
Mr. and Mrs. Edward Huet
Scott Huff
Rhonda Jackson
Sharon Jackson
Rebecca Janicik
Ila Johndrow
Denise Johnson
Mr. and Mrs. Erik Johnson
Dana Jones

Kathy Jones
David Jury
Mr. and Mrs. Nicholas Kabala
Frances Kachmar
Lori Kamauf
Mary Kastroll
Tasso and Jane Katselas
Laurence Katz
Carol Keating
Mr. and Mrs. Michael Kelly
Mark Kelsch
Doreen Kendo
Mary Kidd
Joyce King
Raelene Kish
Matthew Kissane
Victor Kleman
Mr. and Mrs. Stephen Klesic
Michael Koenig
Thomas Kondrat
Kristina Konrath
Mr. and Mrs. Blaine Koontz
Ed Koontz
Daniel Kovalik
Susan Kowalchik
Phyllis Krueger
Teresa Kucsan
Anna Kulikowski
Dr. Christopher Laffoon
Jacquelin Lalor
Margaret Lampenfield
Paula Latislaw
Mr. and Mrs. Paul Laverty
Janet Lea
Argie Leech
Lisa Leonard
Charlotte Leslie
Robert Levin
Mr. and Mrs. James Lewis
Dawn Liddick
Mr. and Mrs. Terry Litzler
Donna Lohrer
Mary Ann Lowe
Mr. and Mrs. Frank Luca
Clifford Luebbert
Jeffrey Lunz
Dr. Dennis Lynch
Carol Mackel
Douglas and Carol MacPhail
Richard Mader
Kevin Magarity
Jill Mahany
Mr. and Mrs. David Mahokey
Patricia Manahan
Les Manganello
Mr. and Mrs. Martin Marinack
Mr. and Mrs. Thomas Marmuscak
Robert and Anne Marshall
Mr. and Mrs. Ed Martin
Teresa Martin-Minnich
Steven Massaro
Carolyn Maue
Dorothy Mazur
Michael Mazza
Rebecca McAlindon
Mary McCabe
Leslie McCombs
Marcia McDermott
Jerry McDevitt
Robin McDougal

Gloria McElroy
Ellen McGill
Mr. and Mrs. James McKain
Albert McLean
Mr. and Mrs. Kenneth McManus
Dianne McMillen
Irene McMorland
Nancy McMullen
Sarah Meahl
Erica Megaw
Jack Megaw
Mr. and Mrs. Mark Melville
Bonnie Merten
Linda Michelsen
Jean Mikulski
Carl Milano
Dr. and Mrs. J. Robert Miller
Julia Miller
Nessa Mines
Michael Misuraca
Dr. Michael Mocue
JoAnn Moller
William Molloy
Dianne Mondello
Dr. Margie Morgan and Dr. Peter Ruane
Mr. and Mrs. Gary Moschetta
Scott Mosman
Mary Moulton
Bill Mullen
Elsie Murray
Kathryn Myers
Ann Nelson
Barry Nelson
Mr. and Mrs. William Nemeth
Robert Neudecker
Kathleen Nevel
Stephen Newman
Mr. and Mrs. William Newson
Lawrence Nist
Kay Norris
Lois Novakovich
Gary Obrero
David O'Donnell
Patrick O'Hara
Mr. and Mrs. Carl Olian
Mr. and Mrs. Kurt Olson
Rebecca Olson
Dee Jay Oshry
Peter and Lucy Osinski
James O'Toole
Blair Paddock
Dennis Paden, Jr.
Catherine Parnell
Mr. and Mrs. Michael Patterson
Donna Pauley
William Payne
Deanna Pazos
Ernest Pedersen
Kenneth Perkins, Ph.D.
Joyce Perri
Linda Pesanka
David Peters
Edward Peterson
Mr. and Mrs. Thomas Peterson
Jack Piatt
Robert Plantz
Laurie Plocki
Mr. and Mrs. Timothy Polka, Sr.
Edward Poropatic
Mr. and Mrs. Martin Potoczny, Jr.

HONOR ROLL to BENEFACTORS ▶

Barbara Power
Kim Prisk
Amy Puchalski
Mr. and Mrs. John Qualley
Stephen and Mary Radack
Mr. and Mrs. Anthony Rakoczy
Joanne Rakov
Mr. and Mrs. David Read
Mr. and Mrs. Harry Reazor
Jan Receski
Naomi Reed
Mr. and Mrs. Mark Resnick
Barbara Rhodes
William Rice
Margaret Rifkind
Mr. and Mrs. John Righetti
Mr. and Mrs. Frank Ritzel
Allen Roberts
Christine Robertson
Bernadette Robinson
Robert Robinson
John Rohe
Mr. and Mrs. Michael Rooney
Frank Ruscetti
Cynthia Russell
Stephanie Russo
Judith Sacco
Bertha Sager
Beate Salter
Rose Samaniego
David Scapes
Karen Scheiner
Mr. and Mrs. Jerome Scherer
Kathryn Schinscn
William Schmelling
Walter Schratz
Richard Scott
Walter Scott
Elizabeth Seaman
Sasha Shapiro
Caitlin Sharik
Katharine Shaw
Susan Shaw-Parente
Michele Shivers
Mr. and Mrs. Kurt Shorts
Jack Shrum
Rebecca Shrum
Arnold Silverman
Arnold and Susan Silverman
Donald Simmons
Nancy Skultety
Richard Small
Candice Smith
Janet Smith
Sandra Smith
Martha Snezek
Barry Sokolow
Donna Sommer
Susan Soniak
Cheryl Soriano
Marilyn Standley
Rebecca Staub
Ruth Staudacher
Melvin Stein
Norren Steinsdoerfer
John Stember

Mr. and Mrs. William Steward
Mr. and Mrs. Mark Stewart
Lisa Stofan/LJS, Inc.
Mr. and Mrs. Richard Stokoski
Rapheala Stoner
Joseph Straub
Cindy Streng
David Stroud
Pamela Stroud
Jeanette Stump
Mr. and Mrs. Thomas Sudzina
Mr. and Mrs. John Sylvester
Mr. and Mrs. Robert Synakowski
James Szalla
Janeane Tabaka
Debbie Taccone
Don Tanabe
David Tautkus
Madeleine Taylor/Creations By Madeleine
Rita Taylor
Wendy Taylor
Christine Tellalian
Paul Titus
Lisa Tooley
Cathleen Tressler
Robert Trinkle
Deborah Trump
Stephanie Tutka
Karen Uhrmacher
Karen Ulrich
Richard Valencia
Dale Van Kuren
Kevin Van Norstrand
James Vent
Douglas Vernon
Estrella Viloria
Michaileen Vilsack
Jeanette Vinovich
Mike Vogel
Joan Walker
Thomas Wallace
Cynthia Ward
Robert and Wanda Wareham
Mr. and Mrs. Todd Warner
Mr. and Mrs. Joseph Wascavage
Christine Watkins
Rebecca Watkins
Dr. Cyril Wecht
Nadine Weilersbacher
Robin and Brad Weirich
Robin Weiss
Nancy Weith
Marilyn Welsh
Lawrence Werner
Geoffrey White
Jamie Whitten
Julie Whitworth
Mary Wilson
Susan Witt
Allen Baum and Elizabeth Witzke-Baum
Mr. and Mrs. Boyd Wood
Nancy Wyong
Janet Young
Donna Zacchero
Mr. and Mrs. Frank Zarisnak
Andrea Zebrasky

Christia Zelenka
Harvey and Florence Zeve
Jo Ann Zidanic

TRUSTEES

James and Francine Abraham
Dennis Astorino
Richard and Anne Marie Boyd
Mike and Susan Boyle
Mark Broadhurst
Jamie Campolongo
Gary DeJidas
David Duncan
Richard Finley
Rose Gabbianelli
Joseph Havrilla
Mr. and Mrs. C. Talbott Hiteshew
T. Dixon Holladay, Jr.
Marilyn Horner
Don and Marilyn Jenkins
Anne Lewis
Eric Mann
Dr. Timothy McGuire and Dr. Nancy Melone
Kevin and Kristen McMahon
James Meredith
Cheryl and Jimmy Miller
Todd and Miriam Moules
Lucas Piatt
Richard Rauh
Drs. Ellen A. and Loren H. Roth
Carol Savage
Eugene Simon
Steve Stein
Charles and Jean Stout
Mary Beth Taylor
John Tomayko, Ph.D.
Drs. Milton and Nancy Washington
Dr. George and Mrs. Kathleen White
Drs. Nancy and Richard Zelonka

HONOR AND MEMORIAL

Anonymous
Lynn Agee
Peter Ashurkoff
Richard Brean
Robert Clark
Kellybeth Clawson
Susan Cornell
Deborah Davidek
Teresa Dix
Ellen Doyle and Lawrence A. Frolik
Pamina Ewing
Edward Feinstein
Bruce Fickman
Donald and Jennifer Grandis
Paul Harrell, Jr.
Marie Haug
Tracy and Dr. Katherine Henderson
Paul and Colleen Hennigan
Jane Howell
Richard Jones
David Jury
Rochelle Klein
Daniel Kovalik

Jacquelin Lalor
Martens Ice Klass Legghio & Israel, PC
Ellen McGill
Robert O'Gara
Catherine Parnell
William Payne
Kenneth Perkins, Ph.D.
Camille Rolla
Beate Salter
William Schmelling
Richard Scott
Elizabeth Seaman
Sasha Shapiro
Katharine Shaw
Martha Snezek
Melvin Stein
John Stember
Jeanette Stump
Paul Titus
United Steelworkers District 12
United Steelworkers Local 3657
United Steelworkers Of America
Rebecca Watkins

SPECIAL EVENTS

A.G. Mauro Co.
ABARTA Inc.
AHRCO
AlliedBarton Security Services
American Plate Glass Inc.
Aon Risk Services Inc of Pennsylvania
Aramark Educational Services Inc.
Robert Arnoni
Associates in Ophthalmology
Dennis Astorino
Ron and Shirley Barasch
Barnes and Noble College Bookstore Inc.
Henry Beukema
Joseph Bittner
John Bitzer
BNY Mellon Charitable Foundation
Ed Bognar
Nadine Bognar
Richard and Anne Marie Boyd
Mark Broadhurst
George Bromall, J.D.
Buchanan Ingersoll & Rooney P.C
Building Control Systems Inc.
Joe Burgunder
Burt Hill Kosar Rittelmann Associates Inc.
Jeannie Caliguiri
James Campolongo
Dr. Paul S. and Gertrude Caplan*
Philanthropic Fund of The United Jewish
Federation of Greater Pittsburgh
Foundation
Catherine Mark Loevner Family Foundation
Dennis and Annie Hanna Cestra
CJL Engineering
Cohen & Grigsby PC
Continental Building Systems
Cyrus, LLC
Gary DeJidas
David Deklewa
Dickie, McCamey & Chilcote PC
Direct Mail Service Inc.
DLA + Architecture and Interior Design
David Duncan
Eat'n Park Restaurant
Eckert Seamans Cherin & Mellott

Eden Hall Foundation
EDMC Inc
Elg Haniel Metals Corp
Federal Home Loan Bank of Pittsburgh
Federated Investors Inc.
Peggy Ferber
Richard Finley
First Niagara
Steven Fischer
Terri Fischer
Richard Fisher
Philip Frank
GAI Consultants Inc.
The Honorable and Mrs. Robert C. Gallo
Mariann and Dr. Stan Geyer
Graziano Construction Co.
Thomas Grealish
Greenprints, Inc.
Joan Grejda
Joseph Havrilla
Henderson Brothers
Highmark BlueCross BlueShield
Dr. James Houdeshell
Howard Hanna Realty
Industrial Employees Inc.
Dr. Angela Isaac
ISS Pittsburgh
Joanie and Sam Kamin
Elliott Kramer
Paul Kress
Rose Kutsenkow
L & K Marketing
Ladies Hospital Aid Society of Western PA
Michele Langbein
Tom Laporte
Lewis, Glasser, Casey & Rollins, PLLC
Lexus of North Hills
Patricia Liebman
Lighthouse Electric Co. Inc.
Littler Mendelson
Elaine Luther
Mahla Office Equipment
Paul Maloney
Manheim Pittsburgh
Eric Mann
Kenneth Marino
Steven Massaro
Massaro Corporation
Maue Center Inc.
Dr. Karen S. McIntyre
McKamish Chesapeake Inc.
Janice Meade
MEDRAD
Millcraft Industries Inc.
George Miller
Cheryl and Jimmy Miller
Dr. Lori Molinari
Todd and Miriam Moules
OC Reilly Inc.
Dee Jay Oshry
Oxford Development Company
P. J. Dick Inc.
P.L. Frank Inc.
John Paul
Keith Paylo
Pennsylvania Trane Inc.
Chris Peterson
Parry Petroplus
Jack Piatt
Lucas Piatt
Pittsburgh Civic Light Opera

Pittsburgh Transportation Group
PNC Bank NA
Elg Haniel Metals Corp
R & V Associates
David Reichenecker
Terry Rockwell
J. Faye Sampson
Sippel Co., Inc.
Norma Sobel
Arlene and Barry Sokolow
Fred and Mary Ellen Solomon
Steve Stein
Mary Beth Taylor
TEDCO Construction Corporation
The Audrey Hillman Fisher Foundation
The Tomayko Group LLC
TKA Architects
John Tomayko, Ph.D.
Herbert Torbin
Colleen Travis
Tucker Arensberg P.C.
Turner Construction Company
United States Steel Corporation
University of Pittsburgh
University of Pittsburgh Medical Center
UPMC Health Plan
Bruce Varga
Drs. Milton and Nancy Washington
Wealth Preservation & Management Inc.
WTW Architects Inc.
YMCA of Pittsburgh
Audrey Zerkovic

* Deceased

Can't find your name? It could be because...

...you made your gift after our Fiscal Year ended. Gifts made after August 31, 2010, will be recognized in next year's list of donors.

...you asked that your gift be anonymous.

...we made a mistake. Every effort goes into ensuring the accuracy of this report. If we made an error or omission, please accept our apologies and notify us to ensure our records are corrected.

Please contact the Office of Development at 412-392-3999 or annualfund@pointpark.edu if you have any concerns about your listing.

Thank you!



by Colleen Derda

Revitalizing Wilkinsburg

Alumna Tracey Evans leads economic development in her hometown

Tracey Truax Evans (BUS 1987) moves effortlessly among many roles in her work.

It's a skill she began to hone as an undergraduate, after deciding to study business administration in the evening while working full days in technical theater jobs.

Evans completed her business degree in 1987 and accepted a position as a properties designer at the Pittsburgh Playhouse. She stayed five years designing and procuring props, maintaining inventory and generally helping to make the artistic vision of theater and dance productions a reality on stage.

"The Playhouse was its own world," she says fondly. "I especially loved working on the children's shows because they provided special opportunities for creativity."

She later worked as a freelance set designer for Prime Stage, Civic Light Opera, Pittsburgh Ballet Theater, City Theatre, Pittsburgh Public Theatre, Carnegie Mellon University and the Playhouse.

Yet Evans' creativity wasn't only blooming behind the stage. She was also envisioning urban spaces and buildings in new ways.

It started out relatively small, with working to improve a park in Wilkinsburg. That effort snowballed into a new resident association. One volunteer project led to another, and each council meeting led to a second. Eventually Evans found herself with a new calling, and she's been working in community and economic development ever since.

Today, residents of Wilkinsburg and the region are benefiting from her creativity and ability to juggle multiple projects.

In 2010 Evans became the first executive director of the Wilkinsburg Community Development Corporation, an organization she helped to found in 2007. Today she works with a board of directors to implement strategies that improve the quality of life throughout the community.

A large part of the job is leading the revitalization of Wilkinsburg's main commercial district on Penn Avenue, working full-time to execute year one of a 10-year plan developed with input of residents, business owners, political leaders and regional organizations. The economic development work is being funded in part through a \$1.8 million pledge from Tri-State Capital Bank through the state's Neighborhood Assistance, Neighborhood Partnership Program. Evans acts as liaison with all funders and partners, including Pittsburgh History and Landmarks Foundation, state and local political leaders, and state agencies.

Every workday is different. One might address getting specific storefronts up to code and in rentable condition. A day later she might be identifying sources of funding for demolition of select

buildings. Another, she might be found with staff planning the delivery of new trees to the business district. And still another, writing new grant applications and promoting the district's successes.

The job fits Evans like a glove. Her previous community roles include working as a legislative assistant for Pa. Rep. Joseph Preston Jr. She is in her fifth year as an elected member of the borough council, and for the past eight years she has chaired both the Wilkinsburg Municipal Authority and Wilkinsburg Borough Commercial and Industrial Development Authority. Five years ago the Wilkinsburg Chamber of Commerce named her Citizen of the Year.

She recently marked 25 years of living in Wilkinsburg. She and her husband and their two children, ages 12 and 16, still live near Whitney Park, the green space she helped to redesign years ago.

And of course, she still loves the theater.

Photos by Martha Rial.

Tracey Evans in Wilkinsburg, Pa.



ALUMNI CONNECTIONS ▶



Dear fellow alumni,

Serving as your president of the board for our Alumni Association over the past eight years has been a true honor and privilege. As I conclude my tenure as president and reflect upon the past, there have been some significant milestones experienced by Point Park. Here are only a few: the transition from a college to a University; seeing the baton pass from President Katherine Henderson to President Paul Hennigan; the creation of the Green and Gold Society; working with *incredibly* talented Alumni Relations staff; attending commencement and countless others.

Over these many years, being surrounded by enormously talented fellow alumni has been a very humbling experience. There is nothing that the board will not be able to accomplish in the future with the leaders currently involved and those yet to come. The ideas, commitment and creativity shared by board members has helped

me to see not only what Point Park alumni are capable of, but more importantly, who they are capable of becoming both personally and professionally.

With the Academic Village beginning to take shape throughout the University, now is the time for all of us to become involved. So, contact the Alumni Relations office at 412-392-4750 and let them know how they can utilize your talents! Leaving the board does not mean leaving the Alumni Association, so I look forward to seeing and meeting my fellow alumni at University events.

Have a great 2011!

John Taormina (A&S 2000, BUS 2001)
President, Alumni Association Board
of Directors

CLASS NOTES ▶

▶ 1970s

Barry Ernest (COM 1974) has published his first book, *The Girl on the Stairs*, at Kindle e-books on Amazon.com. A resident of Harrisburg, Pa., Barry reports that his new book "involves a 35-year search for a missing, yet significant, witness to the John F. Kennedy assassination. Friends, classmates, or those interested in facts rather than fiction (thank you, Vincent LaBarbera) may catch up with me through my email address, whodidit@verizon.net, visit me on Facebook, or visit my website and blog at: <http://mysite.verizon.net/restu5kb/>.

Fred McLeod (COM 1974), familiar as the television play-by-play voice of the NBA's Cleveland Cavaliers, was among six distinguished alumni inducted into the Elizabeth Forward High School Hall of Fame on Oct. 2, 2010, at the Youghioghny Country Club. A former University baseball player who studied journalism at Point Park, McLeod has been the voice of the Cavaliers since 2006. Prior to joining FSN Ohio, he served 22 consecutive seasons as the television voice of the Detroit Pistons. His 22 years is a record for a television-only announcer with the same NBA team. In 2000, he received the American Academy of Arts and Sciences Silver Circle Award.

Adrienne Roll (A&S 1971) has been named



regional vice president of inland marine for the south-east region of Harleysville Insurance. In this position, she oversees the company's inland marine

underwriting efforts throughout the southeastern United States, and is based in Harleysville's Nashville, Tenn., office. Before

joining Harleysville, Roll served as director of property and inland marine for Great American Insurance Company in Houston, Texas. Prior to that, she spent more than 20 years in inland marine and underwriting leadership roles with Chubb Insurance. She began her career with Fireman's Fund Insurance Company.

Barry W. Wilson (BUS 1974) has been named chief financial officer of COPsync Inc., a company that markets and licenses a field-based reporting and information-sharing network that enables police officers to collect, report and share critical data in real time at the point of incident and obtain instant access to various local, state and federal law enforcement databases. The network is aimed at saving lives, reducing unsolved crimes and assisting in apprehending criminals through such features as a nationwide officer safety alert system, GPS/auto vehicle location and distance-based alerts for crimes in progress, such as child abductions, bank robberies and police pursuits. Wilson, who earned his degree in accounting at Point Park, has worked in a variety of accounting and financial capacities at publicly held, startup and emerging, technology companies. He was previously chief financial officer and treasurer as well as vice president of accounting and finance for Zix Corp. and director of finance at Amtech Corp.

Bob Rager (A&S 1974), Point Park University men's basketball head coach, became the school's all-time leader in career victories on Jan. 27 as his Pioneers knocked off nationally ranked Malone, 90-80, in American Midwest Conference play at CCAC-South Gymnasium. The record 306th victory for Rager at his alma mater gave the 22 year head coach one more than his predecessor, Jerry Conboy. Rager now has the third-most wins of any four-year college basketball coach in the City of Pittsburgh. The leader in that category is



Bob Rager and Pioneers.

Pitt coach Dr. H.C. 'Doc' Carlson, who had a record of 367-248 in 31 years from 1922-53. Next on the list is Duquesne's Charles 'Chick' Davies, who compiled a mark of 314-106 in 21 years from 1925-43 and 1947-48. Conboy now stands fourth with a record of 305-241 in 20 years from 1969-89. According to an article in the Pittsburgh Post-Gazette last fall, "Rager said the players he has had over the years should get most of the credit. 'Like I tell people all the time, players win games, not coaches ... As for passing Conboy on Point Park's victory list, 'He's a legend,' Rager said. 'Whether I pass him or not, it doesn't diminish what he accomplished. He taught me a lot of basketball. We both have different styles that we like ... and we both had to deal with the difficulty of not having our own gym.'"

DO YOU KNOW ABOUT THE EXTRA BENEFITS OF BEING A POINT PARK ALUMNUS?

- Discounts on community classes offered by Point Park
- Free access to the University's Office of Career Development
- Discounts on Liberty Mutual auto, home and renter's insurance
- Discounts on medical, long-term care, dental and pet insurance
- Access to select University facilities such as the Library and Recreation Center
- Access to the many events sponsored by the Office of Alumni Relations

Visit www.pointpark.edu/Alumni/BenefitsandServices to find out about these benefits and more!



DROP US A NOTE!

Visit www.pointpark.edu/classnote to share your news.

Alumnus Gerald M. Feierstein is New Ambassador to Yemen

Gerald M. Feierstein (A&S 1973) was sworn in on Sept. 17, 2010, as the new United States Ambassador to Yemen. Prior to his appointment, he was the deputy chief of mission in Islamabad, Pakistan.

A specialist in Near East and South Asian Affairs, Ambassador Feierstein earned his bachelor's degree in philosophy at Point Park in 1973 and a master's degree in international relations from Duquesne University. He entered the Foreign Service in 1975 and has served overseas in eight postings: Islamabad (1976-1978), Tunis (1983-1985), Riyadh (1985-1987), Peshawar (1989-1992), Muscat (1995-1998), Jerusalem (1998-2001), Beirut (2003-2004) and Islamabad (2008-2010).

In Washington, he served as principal deputy assistant coordinator and deputy assistant coordinator for programs in the office of the coordinator for counterterrorism from 2006-2008. Earlier, he served as desk officer for Nepal, Pakistan and Egypt; deputy director in the Office of Arabian Peninsula Affairs; director of the Office of Pakistan, Afghanistan, and Bangladesh Affairs; and as director of the Office of Regional Affairs in the Near East Bureau. Feierstein is married to the former Mary Gill and is the father of three children: Adam, Anne and Sara.

Feierstein spoke with National Public Radio last January about the growing threat of al-Qaida in Yemen and the Arabian peninsula. To read a transcript of the interview, visit <http://tinyurl.com/66uhhcw>. He also delivered a lecture on the same topic at Wayne State University in Michigan last January. View excerpts from the lecture at <http://tinyurl.com/5trsxcj>.

► **1980s**

Erin Bomgaars (COPA 1987) has accepted a position as marketing manager in the footwear division at Sears Holding Corp.

► **1990s**

Kimberly Rose (COM 1994) completed her master's degree in public health in May 2010. She works for Magee Women's Research Institute and the Microbicide Trials Network. Rita is a research coordinator and behavioral specialist for RO1 HIV/AIDS research studies.

April Weitzel (COPA 1996) is a search engine optimization (SEO) consultant based in Pittsburgh. She advises clients on all aspects of search engine marketing (SEM), including SEO, advertising, online public relations, social media marketing and Internet video optimization. She earned a bachelor's degree in film and video production at Point Park and an M.B.A. from the University of Pittsburgh. Visit www.seoapril.com.

Mark Miller (BUS 1991), principal of Eisenhower Elementary School in Upper St. Clair, was named the Pennsylvania National Distinguished Principal for 2010 in a ceremony in Washington, D.C., last October. The Pittsburgh Post-Gazette reported that "Miller was singled out by the Pennsylvania Association of Elementary and Secondary School Principals as its top educator for his 'sustainable learning community model,' which focuses on individual learning needs of students." He has led the Upper St. Clair School district's largest elementary school, with 504 students, for eight years.

John Frydrych (A&S 1991, 2003) is a civil engineering consultant and eastern regional manager for R.A. Smith National Inc. A resident of Murrysville, Pa., he

earned his bachelor's degree in civil engineering technology and a master's degree in engineering management at Point Park.

► **2000s**

Robert James Finnegan (COM 2009) worked as an event coordinator for the Pittsburgh Civic Light Opera before making a recent move to Philadelphia. He is currently pursuing his master's degree and professional licensure in counseling at West Chester University.

Marcus Stevens (COPA 2003) was nominated for best supporting actor in Philadelphia's prestigious Barrymore Awards last year for his performance as Motel in The Walnut Street Theatre's (WST) production of *Fiddler on the Roof*. Marcus also played the role of Mike Nulty in the WST's holiday production of *White Christmas*. Visit Marcus' recently revamped website at www.Marcus-Stevens.com.

Jonathan Joseph (COPA 2008) owns his own video production company, Counting Sheep Productions. A former resident of Phoenix, Ariz., Joseph earned his bachelor's degree in cinema and digital arts at Point Park. Visit him at www.countingsheepproductions.com.



Cindy Komarinski (BUS 2000), associate professor of culinary arts/hospitality programs at Westmoreland

County Community College (WCCC), received the college's 2010-11 Outstanding Teaching Award. Komarinski has taught culinary arts and hospitality management courses at WCCC for 13 years. During her

In Memoriam

Joann M. Moslock Meyer (COM 1982) died on October 31, 2010, in Titusville, N.J. She was 49. JoAnn was a former reporter for the Trenton Times and the Asbury Park Press. Most recently she was the director of communication for the Hopewell Valley Regional School District. JoAnn won many awards from the New Jersey Press Association for her journalism work in Trenton and Asbury Park, as well as awards from the New Jersey School Boards Association. She is survived by her parents, John and Darlene Moslock of Danville, Pa., and her husband George and daughters, Jacqueline, Rachel and Meredith.

tenure, she has developed curriculum for new courses, implemented an herb garden in cooperation with the college's horticulture program, established a guest lecturer seminar series for students and coordinates the internship experience for all culinary arts/hospitality students. She is president of the American Culinary Federation, Laurel Highlands Chapter.



Ben Cole (COM 2009) and **Annie Perri** (COM 2009), who both earned bachelor's degrees in broadcast journalism at Point Park,

were married in October 2010 in Pittsburgh. Annie is a technical specialist at KDKA-TV and freelances in Pittsburgh for various media productions, including the Pittsburgh Penguins, Comcast and FSN. Ben is a producer at Clear Channel Radio in Pittsburgh and hosts a weekly show on WYEP-FM 91.3. As students, Annie served as president of College Students in Broadcasting and as the first executive director of Point Park's campus channel, U-View. Ben served as assistant general manager and production director at WPPJ.

Andy Coleman (COM 2006) joined Berry Advertising & Marketing (BAM), an independent agency in Pittsburgh's South Hills, as a campaign strategist. His position encompasses account service, media planning and buying, and copywriting responsibilities for a variety of brands, including TGI Friday's, Culligan Water and other regional accounts. Andy is also active in the arts and recently performed on stage in the Pittsburgh New Works Festival.

Alexandra Elizabeth Till (COPA 2010) was a two-time finalist on the hit television show *So You Think You Can Dance*. Alexandra also performed as a dancer on Royal Caribbean Cruise Line's Freedom of the Seas ship, which recently toured throughout the eastern and western Caribbean.

Sarah (Pribish) Lavra (COM 2002) was promoted to senior associate director of admission at East Stroudsburg University (ESU) in Pennsylvania in November 2010. Sarah joined ESU's admission team in 2005. She writes, "On December 7 I gave birth to my second daughter, Abigail Elizabeth. Her big sister, Katren, has been very helpful to her mom and dad with her new little sister."

Patricia M. Lonsbary (BUS 2000) joined UNICEF's Private Fundraising Partnerships as a fundraising specialist for major gifts. Now based in Mies, Switzerland, she has extensive experience in nonprofit fund development, management and marketing.

She has managed educational programs and earlier in her career served as a radio public affairs director, producer and writer. She is a former vice president of development and marketing for Sheffield Place, in Kansas City, Mo. As a consultant with Ketchum, she led campaigns for such organizations as Prairie View A&M University, Mercy Gilbert Medical Center, Palmer Trinity School and the Steel Industry Heritage Corporation. She loves fly-fishing, writing about her travel experiences, photography and volunteerism.

Case Dillard (COPA 2005), **Eric Hatch** (COPA 2004) and **Shua Potter** (COPA 2004) are currently performing in the national tour of the hit Broadway musical *Mary Poppins*. When the company came to Pittsburgh last January, the alumni returned to the Conservatory of Performing Arts to teach a master class to students. The Pittsburgh Tribune Review caught up with Dillard and Potter (both musical theater graduates) and Hatch (a dance graduate) to talk about their experiences with the show. Visit <http://tinyurl.com/6assln4>.



From left: Carol Angeli Dillard (Case's wife and fellow castmate in *Mary Poppins*), Case Dillard, Eric Hatch, Point Park President Paul Hennigan, and Shua Potter at a master class on campus.



Up and Coming

Alumni Network Pays Big Dividends for Actress Ashley Archambeau

by Colleen Derda

“Ashley has that magical thing called ‘charisma,’” says Lynn Fero (COPA 1981) of Ashley Archambeau (COPA 2009).

Fero, a CBS television distribution executive, recently helped to arrange a movie audition for the young alumna, and less than a week later Archambeau was on her way to Portugal to play a lead role in the independent film *Femena*.

The story provides a lesson in the importance of networking, both say.

Fero became reacquainted with Archambeau at an alumni dinner held after the 2010 Showcase in Los Angeles, when the young actress made a point of reconnecting. Just days later, when Fero’s husband, director and writer Matt Cimber, said he needed to replace the lead actress in his new film, Fero immediately thought of Archambeau.

“I hadn’t seen Ashley perform, but I knew the training she received at Point Park and I knew the quality of the talent at the University,” says Fero. “Add in her charisma, and I sensed that she might be able to carry the film.”

Femena tells the story of a young woman who faces questions of love and loss while dealing with an unexpected pregnancy. Cimber wrote the screenplay based on the novel *Letter to a Child Never Born*, by (now deceased) Italian journalist Oriana Fallaci.

Cimber auditioned Archambeau for the lead (via Skype), checked out her references (including Point Park faculty), and arranged for her to meet the film’s producers in Los Angeles. Pleased with the results, the director decided he was “willing to roll the dice” on Archambeau, in part because of Fero’s recommendation and his knowledge of the extensive training at the Conservatory of Performing Arts.



Associate Professor Zeva Barzell says Archambeau made the most of her time at Point Park. Her “zest for life” and “strong work ethic” was evident from her earliest days on campus, says Barzell.

While earning a bachelor’s degree in musical theater, Archambeau served as assistant director for Playhouse Jr.’s production of *Alice in Wonderland* and appeared in Conservatory Theatre Company’s production of *Ragtime*, among a variety of other roles on stage and behind the scenes. She also worked at Pittsburgh’s City Theatre. On campus, she helped found an experimental theater group to enable students to explore their own projects.

The actress credits Barzell, and theater department chair John Shepard, with helping her grow in all aspects of her life. “They inspired me to be a better artist and a better person,” says Archambeau.

“Students earn relationships with coaches and find mentors here,” says Barzell. “It’s part of their Point Park training. We encourage them to share their victories and career challenges throughout their lives.”

Archambeau says she considered leaving acting to pursue stage directing, but Barzell encouraged her to live in the moment and see what happened. “She often told us to ‘be in the struggle because

beautiful things will result from the work,” Archambeau remembers.

Her professor was right. As a result of her performance in Point Park’s 2009 L.A. Showcase, Archambeau secured an agent and began to pursue multiple opportunities.

The actress says she’s learned that you should “try to do it all,” so in addition to auditioning and participating in workshops, she’s tried her hand at stand-up comedy, Vaudeville burlesque and creating a cabaret. She’s danced with John Quale (better known as Prince Poppycock of *America’s Got Talent* television fame), and had a recurring role in *Get Thee Behind Me*, for Time Warner On Demand. And she recently shot a trailer for *City of the Dead*, a pilot being pitched to Showtime.

In 2011 the Ohio native will return to the Portimao region of Portugal to complete filming of *Femena*, which also features well-known Brazilian actress Sonia Braga, a Golden Globe nominee for such films as *Kiss of the Spider Woman*. Archambeau hopes that *Femena* will have a screening in Pittsburgh in 2012.

Opposite and right: Ashley Archambeau on a recent visit to Pittsburgh’s South Side. Photos by Martha Rial. Above left: Archambeau (second from right) at the 2009 L.A. Showcase. Above right: Lynn Fero (third from right) at a Point Park reception in L.A.

In addition to being a successful actor and director, Archambeau says that one day she wants to have her own production company. And she wants to become a philanthropist.

According to Fero, there’s no doubt this young alum is going places.





POINT PARK MEN'S SOCCER TEAM HOPES TO BUILD ON 2010 TURNAROUND

by Kevin Taylor



This page top right: Manuel Schneckenreither on the field. Above: Alex Sala was named all-conference first team. Photos by Chelsey Engel.

The Point Park University men's soccer team experienced one of the biggest turnarounds in the nation this past fall. One year after having a final record of 1-15-1 in the fall of 2009, the Pioneers improved to 8-9 overall in 2010.

Although the record of slightly under .500 is far from being the ultimate goal of fourth-year head coach Jeroen Walstra, the seven-win improvement was among the top turnarounds in all of NAIA men's soccer, and it's something the Pioneers hope to build on in the future.

"I always expect to win, even when we were 1-15-1," said Walstra, a native of the Netherlands. "In 2010 we improved the talent on our team greatly, and it's the players who deserve the credit because they win games."

"There's definitely a buzz that the program has improved, but we have to keep it going. We need a few more good years to establish ourselves as a consistent program. The objective is to build a team that makes the conference playoffs three out of four years and the national tournament at least once in four years."

And there's reason to believe the Pioneers will be successful in the coming seasons. Walstra has given stability to a program that had 11 head coaches in the 18 years prior to his arrival in 2007. Also, Walstra's recruiting has greatly upgraded the team's talent over the last four years. Newcomers Alex Sala, a playmaking midfielder, and fellow Austrian native Manuel Schneckenreither, a skilled forward, were two of the big reasons for the improvement in 2010. Sala was named all-conference first team while Schneckenreither was a second-team choice. Schneckenreither, who had a team-high 11 goals and 24 points, was also named the conference's Freshman of the Year.

Sala, a sophomore, and Schneckenreither both return next year along with junior goalkeeper Zeke O'Donnell, an all-conference second-teamer from Butler, Pa. Other top players returning are All-AMC honorable-mention selections Shane Lucas, a junior defender from West Homestead, Pa., and Andres Escobar, a junior defender from Colombia.

Point Park started the 2010 season with a 6-1 record. In a very challenging conference schedule, the Pioneers lost four games by a single goal, one of which was a 1-0 loss to Notre Dame (OH) after taking the third-ranked team in the nation to overtime.

The Pioneers return all but one player from the 2010 team. Other important returners will be Anthony Russo (D/M), Miguel Alvarez (M), Brett Gwodsen (M), Phil Malle (D), Matt Dziak (D) and Wido Sagerer (D).

2010 FALL SPORTS ROUNDUP

▶ VOLLEYBALL

The Pioneers were 29-10 overall and made the conference playoffs for the fourth time in five years with an AMC record of 7-3. Seniors Rachel Roddy, Ashley Zietak and Angela Nelson had a record of 105-50 the last four seasons. Roddy and sophomore Lindsey Oberacker were named All-AMC first team while Zietak and junior Katie Geary were second team. The Pioneers have averaged 22 wins per season in the six years under head coach Mike Bruno.

▶ MEN'S CROSS COUNTRY

Men's cross country set a new standard with three runners establishing an 8K time under 27 minutes and two others finishing under 30 minutes at some point during the season. Leading the way was transfer Andrew Rowland, whose time of 26:01 at Walsh set an 8K school record. Other top personal-bests came from Reuben Rono (27:03) and Dylan Grunn (27:56). The Pioneers took first place at Pitt-Greensburg to register the first win in program history.

Including Walstra from the Netherlands, a total of eight countries were represented on the roster. In addition to Austria and Colombia, other nations were Germany, Ghana, Guinea, Canada and the United States.

Sophomore Francis Tabi (F), a native of Ghana, totaled 17 points, while classmate Matt Anecchiarico (F), from Canada, tallied 10 points.

"At Point Park, we have created an international soccer environment," said Walstra. "Our program gives the

▶ WOMEN'S CROSS COUNTRY

Women's cross country reached new heights as six of the Pioneers' 12 runners turned in a season-best time under 23 minutes (5K). Transfer Justine Michael set a 5K school record with a time of 20:04 at the AMC championship meet followed closely by Sarah Austin (20:52) and Lindsay Dill (21:33). The Pioneers placed second at Pitt-Greensburg to establish their highest finish ever.

▶ WOMEN'S SOCCER

Under first-year coach Mark Platts, the Pioneers were 4-13 this year. Point Park was competitive in several contests, but ended up losing five games by a single goal. The Pioneers jelled late to win two games the final week, and Platts, a native of England, welcomes back All-AMC honorable mention picks Lauren Evans and Colleen Poploski next year. Senior captain Ashley Goodsell was also All-AMC H.M.

players an opportunity to play with teammates from all over the world and learn from their cultures. In today's global society, that is really important.

"The potential is there for us in the future. We have some talented players returning and some promising recruits."

Kevin Taylor is director of athletic communications at Point Park. For more sports news, visit www.pointpark.edu/Athletics.

Refer a Student

Visit www.pointpark.edu/Alumni/PART/referastudent

Once Upon a Time

Kiki Lucas (COPA 1999) and Marlana Walsh-Doyle (COPA '01) graduated from Point Park University with degrees in dance.

Kiki and Marlana are employed by the Houston Metropolitan Professional Dance Company.

Kiki and Marlana told their friend, Jasmine Hearn, about their great experience at Point Park.



Today

Jasmine is a senior at Point Park, majoring in dance and employed by the August Wilson Center Dance Ensemble.

Moral of the Story

Share your Point Park experience and refer a prospective student. You'll be amazed at the impact it can have.