

## New Online Catalog

<http://pointcat.pointpark.edu/>

Pointcat, the Point Park Library online catalog, has changed. New features include a friendlier user interface with images of book covers, book reviews, chapter excerpts and tables of content. Also new to this catalog is a featured item list, where subject-specific material can be highlighted for easier browsing.

Visit PointCat to search for books, CDs, DVDs, VHS tapes, plays, and musical scores held by the Point Park University Library. Also, use the catalog to check your patron record, to renew items, and to request or hold material for pick-up at your convenience.

7 Add to 	<b>The Ruin Of J. Robert Oppenheimer : And The Birth Of The Modern Arms Race</b> McMillan, Priscilla Johnson. New York : Viking, c2005. viii, 373 p., [16] p. of plates : ill. ; 24 cm.	
1 copy available at Popular Collection		
8 Add to 	<b>The Mermaid Chair</b> Kidd, Sue Monk. New York : Viking, c2005. xi, 335 p. ; 22 cm.	
1 copy available at Popular Collection		
9 Add to 	<b>War Reporting For Cowards</b> Ayres, Chris, 1975- New York : Atlantic Monthly Press, c2005. xii, 280 p. ; 24 cm.	
1 copy available at Popular Collection		
10 Add to 	<b>Undead And Unappreciated</b> Davidson, MaryJanice. New York : Berkley Sensation, c2005. 271 p. ; 22 cm.	
1 copy available at Popular Collection		

*Book Covers Displayed on the new PointCat Online Catalog*

## Databases, New for Fall '05

Check out the new additions to the Point Park University's Databases. To access these databases and all of the others, go to [www.pointpark.edu](http://www.pointpark.edu) → **Library** → **Online Resources - Databases** → **All Databases**

### American Film Scripts

Provides full text access to assorted film scripts as well as detailed information on the scenes, characters and people related to the scripts

### Educators BookSource: Nonfiction

Provides abstracts and searchable full text to popular non-fiction books used by teachers. Topics include full-text articles on social studies, science, sports, adventure, technology, etc.

### Educational Professional Development Collection

Designed for professional educators, this database provides a highly specialized collection of education journal and reports.

### History Reference Center

Provides full-text entries from history reference books, encyclopedias, journals, historical documents, etc. Also has 87 hours of historical film and video.

### (Company Data) Hoover's Online

Provides detailed information about U.S. and International companies.

### In the First Person

Provides full text and/or indexes to letters, diaries, oral histories, and other personal narratives covering a wide array of topics.

### North American Theatre Online

Provides full-text access to various plays, reference materials, playbills, and other resources

### Wall Street Journal

Provides full-text access from 1982 to present of the *Wall Street Journal*, with coverage that includes national and international finance as well as other topics.

**Remember, the databases are available off campus too. You will need your Point Park e-mail username and password to access them.**

## Wireless Access at University Center

**Good news for lap-top owners!** Wireless access to the Internet is now available on the first floor and lower level of University Center. Pull up a comfortable seat at the library to browse the Internet, type your papers, and to do library research on your own computer. You will need your Point Park computer lab username and password to use this service.

Connect to SSID: PointPark

**Good news to those without lap-tops too!** Soon you will be able to borrow a laptop for use in the Library. Watch for more details about this new library service.

## Additional Computer Lab at University Center

When it looks like there is not a free computer to be found on campus, don't forget to check out the Library Instruction Lab at University Center. When not scheduled for use by the library staff, the Library Instruction Lab is open for general student computing use. Located on the lower level of University Center, this lab, with 11 computers and a laser printer, is a quiet place to do library research, write papers, view DVDs, and catch up on e-mail.

The lab will be the site of many library instruction sessions as well as special workshops and presentations sponsored by the library staff. See the last page of this newsletter for upcoming workshops. Please feel free to give us your ideas for other possible workshop and presentation topics.

## Faculty: Schedule Library Instruction Sessions with Web-based Form

A new online form for faculty makes scheduling library instruction sessions easy. We ask that faculty submit the Web-based form to schedule their sessions instead of contacting library staff individually. Centralizing instruction requests with the online form allows the Library to more efficiently schedule classroom space, order necessary equipment, and better manage communications with the teaching faculty.

Find the online form at:

[www.pointpark.edu](http://www.pointpark.edu) → Library → Library Instruction

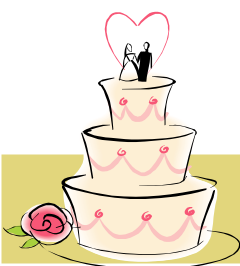
Remember, Point Park librarians are available to teach instruction sessions for classes or other groups at the University. Session topics include general library use, subject specific resources, database overviews, and assignment-specific research instruction. As always, it is very helpful to the library staff when faculty schedule their instruction sessions at least a week in advance.

## Scholastic Book Fair to Return in November

By the end of the Scholastic Book Fair held during the Spring 2005 term, the Point Park University Library and Education Department had raised over \$1200 in credit to buy books for the children's literature collection. The library thanks Dr. Suzanne Miller and all the students who helped out with the sale. We also send a really big thanks to Clifford the Big Red Dog for stopping in for a visit.



The next Scholastic Book Fair will take place **November 29<sup>th</sup> through December 6<sup>th</sup> 2005**, just in time for the holidays.



# Database Spotlight

**Thanks to Oxford Reference Online,  
Librarian Gives Good Wedding Advice**



One of my dearest friends recently got engaged. Instead of the stock obligatory congratulations, I wanted to give her something heartfelt and meaningful – I wanted to give her advice.

Advice that is wise, yet socially appropriate should come easily to a librarian, especially a librarian who has the Point Park University Library databases to back her up. Armed with the full-text *Dictionary of Superstitions* from *Oxford Reference Online*,\* I had this to say to my newly engaged friend:

.....

Dear J \_\_\_\_\_,

Start out this marriage on the right foot by establishing that **YOU ARE THE BOSS** from the very beginning! This is what you need to do:

- 1.) According to Yorkshire customs, make sure that on your wedding day you step over the threshold before he does; otherwise, he will be the dominant partner. Let's just say that I have seen the size of your feet, and this should not be a problem for you.
- 2.) The Welsh would tell you that you have to be **THE FIRST TO PURCHASE** something immediately after the wedding. If he buys something before you do, he will be master of the house. Don't worry! I will be waiting outside the reception hall to sell you a stick of gum. I think \$10.00 will be a reasonable price for you to pay to ensure your domestic omnipotence.
- 3.) During the ceremony, if you have to assist him in putting the ring on your finger, you will surely be the boss. Eat a lot of salty foods beforehand. He will then need your help to jam that ring on your bloated finger, and nobody will be the wiser.

Heed my advice before it is too late! And of course, congratulations and best wishes on your betrothal...

Love... Anna

\*\*"MARRIAGE: dominant partner" A *Dictionary of Superstitions*. Ed. Iona Opie and Moira Tatem. Oxford University Press, 1996. *Oxford Reference Online*. Oxford University Press. Point Park University. 14 October 2005 <<http://www.oxfordreference.com/views/ENTRY.html?subview=Main&entry=t72.e884>>

.....

Passing along fun superstitions to friends is only one of the many uses for *Oxford Reference Online*. This database contains over 100 full-text reference titles. These include **DICTIONARIES** and **ENCYCLOPEDIAS** from a broad range of subject areas:

Art & architecture	Economics & Business	Literature	Performing Arts
Biological sciences	English Language	Maps & Illustrations	Physical Sciences and Mathematics
Classics	History	Medicine	Quotations
Computing	Languages	Military History	Religion & Philosophy
Earth & Environmental sciences	Law	Mythology & Folklore	

Features allow the user to search terms in the whole collection, in a focused subject area, or in individual reference books such as *The Oxford Companion to American Theatre*, *The Oxford Guide to American Supreme Court Decision*, *A Dictionary of Accounting*, and many more. During the initial stages of research, Oxford English Reference Online is a valuable tool for gathering background information about your topic. For quick facts, it is easily accessible from campus, from work, and from home.

**To get to *Oxford Reference Online* and our many other online databases go to:**  
[www.pointpark.edu](http://www.pointpark.edu) → Library → Online Resources – Databases → All Databases

## Results of Library Survey

The Library thanks the 295 students, staff, and faculty members who completed the LibQual survey in April 2005. Because of your participation we are better able to address the concerns that the Point Park University community has about library service and resources. In response to your survey comments we have already...

- *implemented a cell phone policy in the library in order to cut down on some of the extra noise on the first floor of University Center*
- *set up a "new book" kiosk to display recent library purchases*
- *increased library hours on Saturdays*
- *set up wireless access space for laptop users*
- *planned upcoming student events to encourage a sense of place in the library*
- *increased library instruction opportunities so that more students and faculty know about our many resources and services*

Participants in the survey had a chance to win prizes as compensation for their time and effort. One iPod Shuffle, four memory sticks, and three Starbucks gift cards were eagerly received by eight lucky students who took the survey.

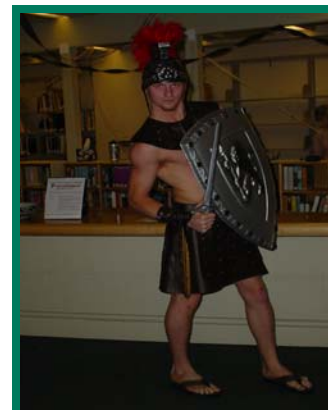
## 2nd Annual Halloween Costume Contest

Wear your Halloween costume to the library and pose for a picture on **Friday October 28th or Monday October 31st** to be entered in our best costume contest and raffle drawing.

**Prizes!**

**Candy!**

**Laughs!**



## Library Workshops

The Point Park Library is now offering regular workshops to students, staff, and faculty. There is limited seating so please sign up for workshops in advance by calling the reference desk at **412-392-3171** or emailing [amihalega@pointpark.edu](mailto:amihalega@pointpark.edu).

**Bring Your Assignment** — in this workshop you will have *personalized* instruction on how to find databases relevant to your topic, how to search and request items from other libraries, and how to construct better searches to save you time and effort on your assignments.

Bring a copy of your assignment, and don't be surprised if there are treats and giveaways at the workshop!

**Wednesday November 2 from 11:00am - 12:30pm** and **Thursday November 3 from 2:00pm - 3:30pm.**

**Databases for Faculty and Staff** — in this workshop you will get an overview of the many Point Park databases. You will learn how to navigate advanced search screens and menus. You will also learn how to set up e-mail alerts that will update you when current articles about your research and personal interests become available. Don't worry! You too will get treats and beverages for attending this workshop.

**Wednesday, November 8 from 11:00am - 12:00pm** and **Thursday, November 9 from 2:00pm - 3:00pm.**

## Point Park University Library

414 Wood St.  
(412) 392-3171  
[library@pointpark.edu](mailto:library@pointpark.edu)

Mon-Thurs: 8:30am-10:00pm  
Fri: 8:30am-5:00pm  
Sat: 8:30 am-6:30pm  
Sun: 1:00pm-9:00pm