



Paul Hennigan
President, Point Park University

2000-2006

After serving six years as the director of finance and chief financial officer for Pittsburgh Mayor Tom Murphy, Paul Hennigan began his career at Point Park College in 2000 as the vice president for finance and operations under President Katherine Henderson, Ph.D. Henderson was focused on growing the school and added Hennigan to the team to help manage the growth. Their first building project together was the two-level Academic Hall atrium to provide a more open and welcoming front door to the campus. From there, the two worked on what became known as the George Rowland White Performance Center. Henderson focused on raising the \$16 million for the building, while Hennigan oversaw design and construction. **This LEED Gold building is home to one of the nation's top five dance programs.**

As Point Park continued to grow in enrollment, Henderson spearheaded the effort and achieved university status in 2003. This is when Hennigan lead the development of the school's master property acquisition plan to satisfy Point Park's growth plans and gain control of the Wood Street First Side neighborhood that had fallen into disinvestment. He also started his doctoral program at the University of Pennsylvania in higher education management.

As Hennigan started to implement the master property acquisition plan, his vision for the Academic Village was conceived. Instead of having a collection of old buildings Downtown, Hennigan wanted a campus identity and sense of Point Park community for students, faculty, staff and visitors. He also realized the school was acquiring many older buildings with historically significant, turn-of-the-20th-century facades. This is when the partnership with Pittsburgh History and Landmarks began. Hennigan learned from the foundation's leaders how to restore and preserve older buildings. **The University now has 10 such buildings.**

Hennigan earned his doctorate in education from Penn in 2005, and Henderson was granted a one-year sabbatical by Point Park's Board of Trustees. Henderson began her sabbatical in January 2006, and Hennigan was named acting University president. In the summer of 2006, Henderson retired from the presidency after nine successful years, and Hennigan was named Point Park's president Sept. 1, 2006.

2006-2013

Hennigan's first order of business was to work with the University community on a new vision and strategic plan. This vision and planning process laid the foundation for Point Park's strong and ongoing commitment to student success, academic excellence, community engagement and managed growth. This commitment led to the creation of many innovative programs designed for student success, including doctoral programs, online degrees and the Center for Student Success among others.

As Point Park continued to acquire properties to meet its growth needs, the vision for the Academic Village became more clear for Hennigan. In 2007 Point Park engaged the Urban Land Institute to facilitate a one-week community planning process around the idea of an urban university campus. With funding by local foundations and 125 community stakeholders included, the clear consensus was that Point Park should continue its efforts to develop the urban campus in Downtown Pittsburgh. In 2008 the school announced the vision for the Academic Village at Point Park University, a \$250 million academic investment in the First Side neighborhood. **Today, Point Park's campus consists of 17 properties along five linear blocks on Wood Street and the Boulevard of the Allies.**

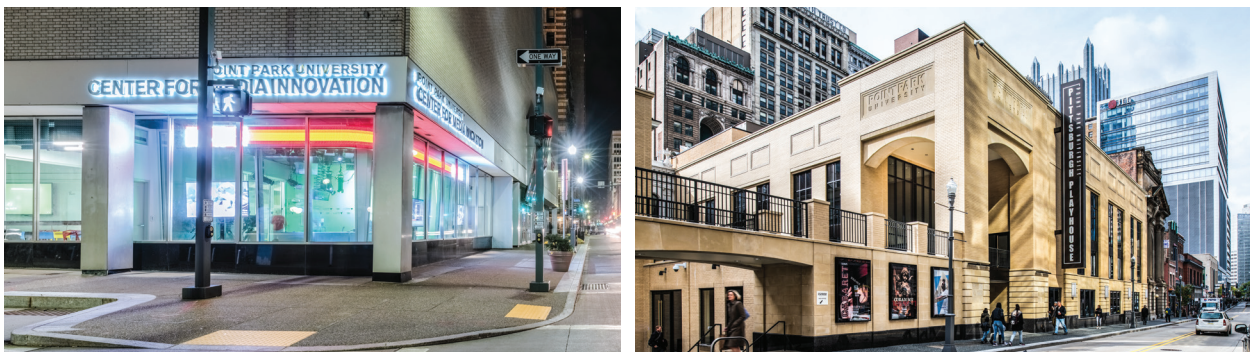


2013-2020

Hennigan is credited with the University's single largest gift - a \$15 million gift from the estate of George Rowland White and Kathleen White in 2013. Point Park used this gift to endow the Rowland School of Business, name the George Rowland White Performance Center and seed the Downtown Pittsburgh Playhouse campaign with \$5 million.

In 2015 the University received a gift from the Allegheny Foundation to create the Center for Media Innovation in the YWCA building at the corner of Wood Street and Third Avenue. This incubator project brings together students and faculty from all aspects of media generation to explore the new frontier of an ever-changing industry. The center is also a beacon for multimedia professionals throughout the region and country.

Thanks to a \$60 million capital campaign lead by local community leaders, Point Park University opened the Pittsburgh Playhouse in Downtown Pittsburgh in fall 2018. **The new Pittsburgh Playhouse, on Forbes Avenue across from PNC's new world headquarters, completed Hennigan's original vision for the Academic Village.**





Colleen Hennigan, the president's wife, provided constant support for the inspiration and determination to complete this project. This state-of-the-art, award-winning entertainment center has three theaters, a soundstage, rehearsal studios, and technical and production studios among its features. It is also connected to two fully restored buildings from the 1900s with magnificent stained glass ceilings, and an exterior facade featuring three terra cotta facades; these were saved from buildings used to assemble the 1.5-acre site. **The Pittsburgh Playhouse is home to one of the top 10 musical theatre programs in the country.**

Among Hennigan's proudest accomplishments is the creation of a University-wide, undergraduate cooperative education program. This program started as a three-year pilot in the Rowland School of Business and is now offered throughout

the University. It allows qualified juniors and seniors to work full time for 12 weeks in a professional setting and make entry-level wages. Students can earn \$10,000 to \$15,000 and up to 12 academic credits toward their degree. **The post-graduation employment rate for co-op students is near 100%, demonstrating a successful approach toward helping with the region's professional employment needs in the coming years.**

Hennigan's many other accomplishments at Point Park University include:

Enrollment Growth = Increased 11%

From 3,546 to 3,929 students

Endowment Growth = Increased 238%

\$14,769,369 to \$49,936,583

Fundraising Success = Raised Over \$70 million

From 2006 to present

University Profile = Elevated Significantly

From its humble beginnings as a business training school turned into a college, to its evolution as a university and major influencer in Downtown Pittsburgh, Point Park University has always remembered what it is, who it serves and the importance of a quality education. For the last 20 years, Hennigan has led with one eye always fixed on the needs of the student, the faculty and staff, and the other eye on how Point Park can be a catalyst for positive academic and economic growth and development.

The University, under Hennigan's leadership, reinvented what it means to provide experiential learning and cooperative education opportunities that result in students achieving their goals to advance in their professions and in their communities.